



SIA 83rd BUSINESS MEETING
Q2 & 1H FY2016/17 Results
3 November 2016

THE PARENT AIRLINE Q2 & 1H FY2016/17 RESULTS



THE PARENT AIRLINE COMPANY OPERATING PERFORMANCE

	<u>Q2 16/17</u>	<u>% Change</u>	<u>1H 16/17</u>	<u>% Change</u>
Available Seat-KM (million)	29,884	-0.7	59,072	-0.9
Revenue Pax-KM (million)	24,027	-4.6	46,164	-3.2
Passenger Load Factor (%)	80.4	-3.3 pts	78.1	-1.9 pts

Slide 3



THE PARENT AIRLINE COMPANY OPERATING PERFORMANCE

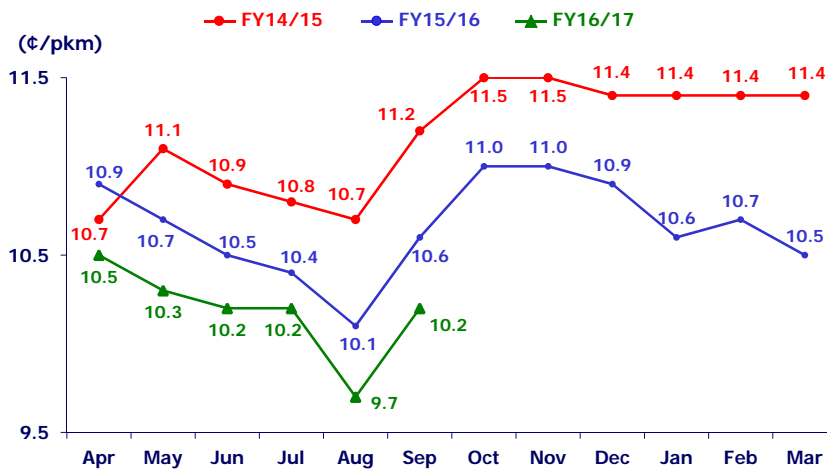
	<u>Q2 16/17</u>	<u>% Change</u>	<u>1H 16/17</u>	<u>% Change</u>
Passenger Yield (¢/pkm)	10.0	-3.8	10.2	-2.9

Slide 4



THE PARENT AIRLINE COMPANY OPERATING PERFORMANCE

Monthly Pax Yields (Including Fuel Surcharge)



Slide 5

SINGAPORE AIRLINES 

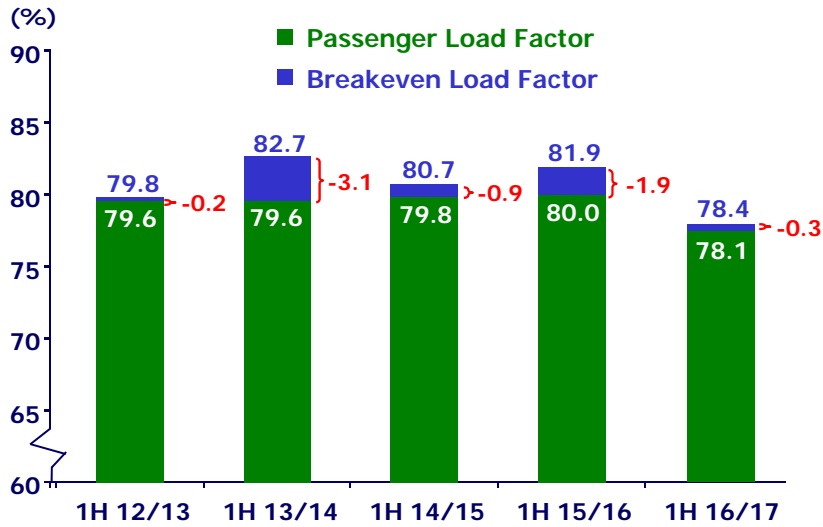
THE PARENT AIRLINE COMPANY OPERATING PERFORMANCE

	Q2 16/17	% Change	1H 16/17	% Change
Passenger Yield (C/pkm)	10.0	-3.8	10.2	-2.9
Passenger Unit Cost (C/ask)	8.1	-6.9	8.0	-7.0
Passenger Unit Ex-Fuel Cost (C/ask)	5.7	+3.6	5.6	+5.7
Passenger Breakeven Load Factor (%)	81.0	-2.7 pts	78.4	-3.5 pts

Slide 6

SINGAPORE AIRLINES 

THE PARENT AIRLINE COMPANY OPERATING PERFORMANCE



Slide 7

SINGAPORE AIRLINES 

THE PARENT AIRLINE COMPANY RESULTS

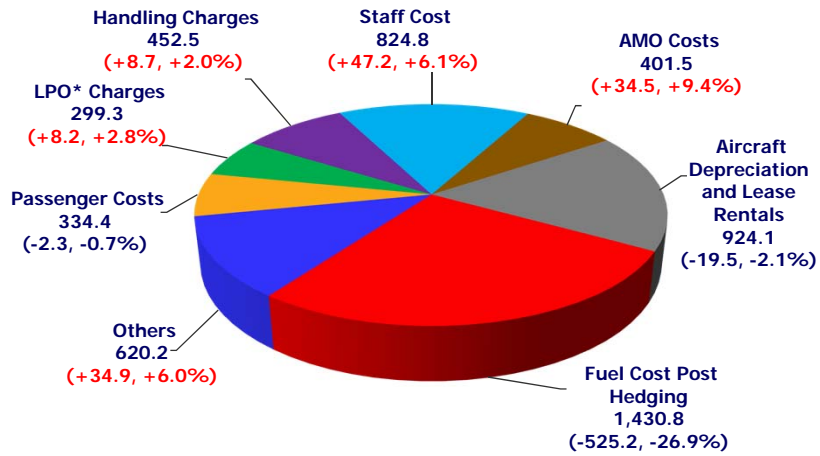
	Q2 16/17 \$million	Better/ (Worse) \$million	1H 16/17 \$million	Better/ (Worse) \$million
Total Revenue	2,766	(232)	5,564	(343)
Total Expenditure	2,687	213	5,288	413
- Net Fuel Cost	733	229	1,431	525
Fuel Cost	618	99	1,204	296
Fuel Hedging Loss	115	130	227	229
- Ex-fuel Cost	1,954	(16)	3,857	(112)
Operating Profit	79	(19)	276	70
Operating Profit Margin (%)	2.9	(0.4) pt	5.0	1.5 pts

Slide 8

SINGAPORE AIRLINES 

THE PARENT AIRLINE COMPANY COST COMPOSITION

1H FY16/17 (\$'M)

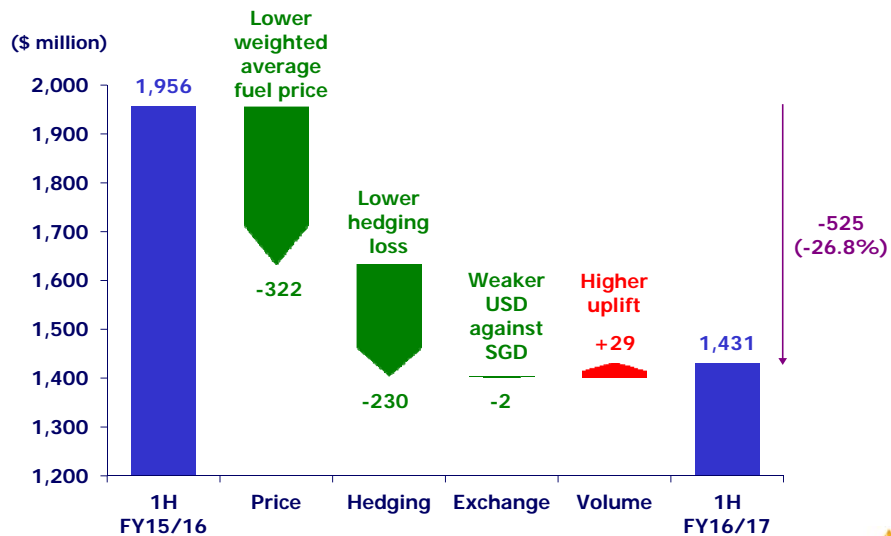


*Landing, Parking and Overflying

Slide 9



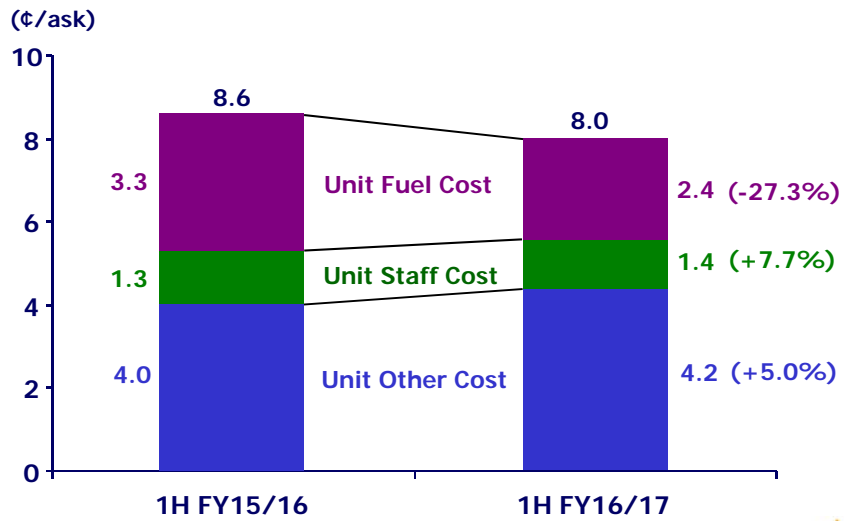
THE PARENT AIRLINE COMPANY FUEL EXPENDITURE



Slide 10



THE PARENT AIRLINE COMPANY UNIT COST ANALYSIS



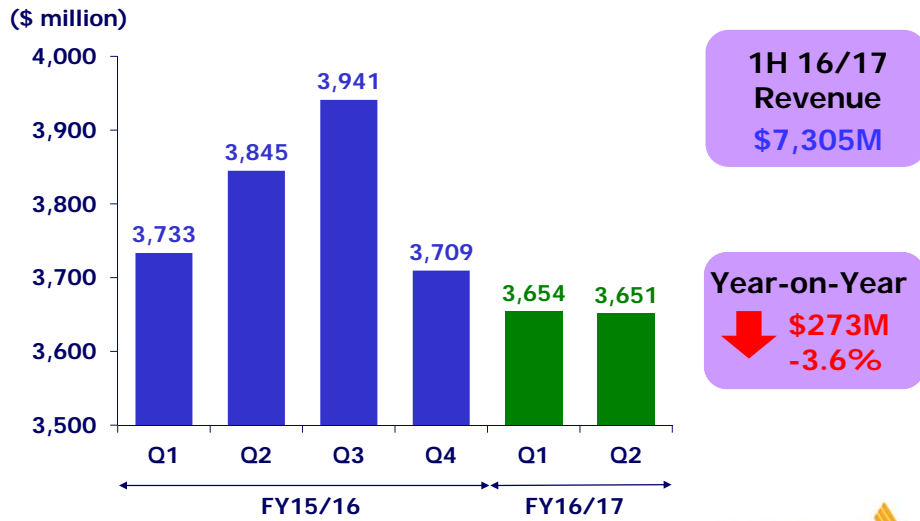
Slide 11

SINGAPORE AIRLINES 

SIA GROUP Q2 & 1H FY2016/17 RESULTS

SINGAPORE AIRLINES 

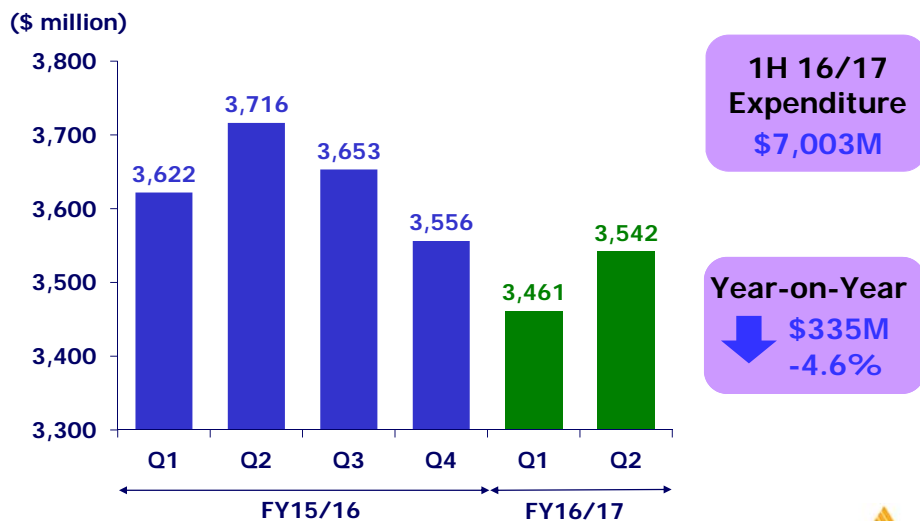
GROUP REVENUE



Slide 13

SINGAPORE AIRLINES 

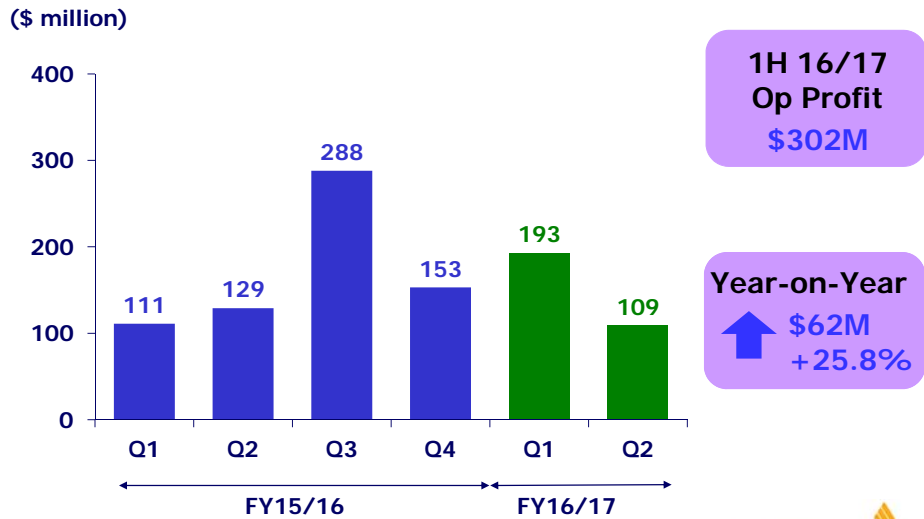
GROUP EXPENDITURE



Slide 14

SINGAPORE AIRLINES 

GROUP OPERATING PROFIT



CONTRIBUTION TO GROUP OPERATING PROFIT

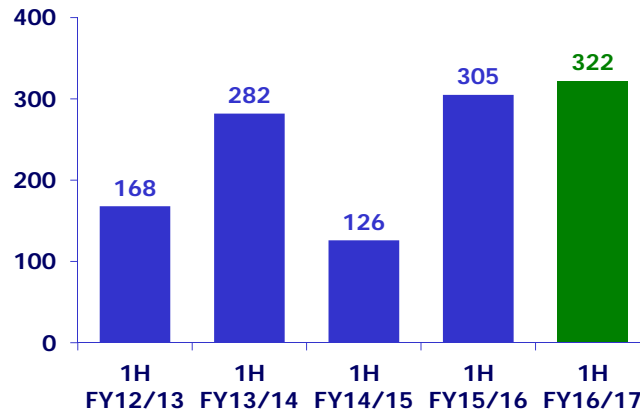
	<u>1H 16/17</u>	<u>1H 15/16</u>	<u>Change</u>	<u>% Change</u>
Singapore Airlines	276	206	+ 70	+ 34.0
SilkAir	44	26	+ 18	+ 69.2
Scoot	6	(22)	+ 28	n.m.
Tiger Airways	11	(10)	+ 21	n.m.
SIA Engineering	23	48	- 25	- 52.1
SIA Cargo	(45)	(12)	- 33	n.m.

Slide 16

SINGAPORE AIRLINES

GROUP PROFIT ATTRIBUTABLE TO OWNERS OF PARENT

(\$ million)



**1H 16/17
Net Profit
\$322M**

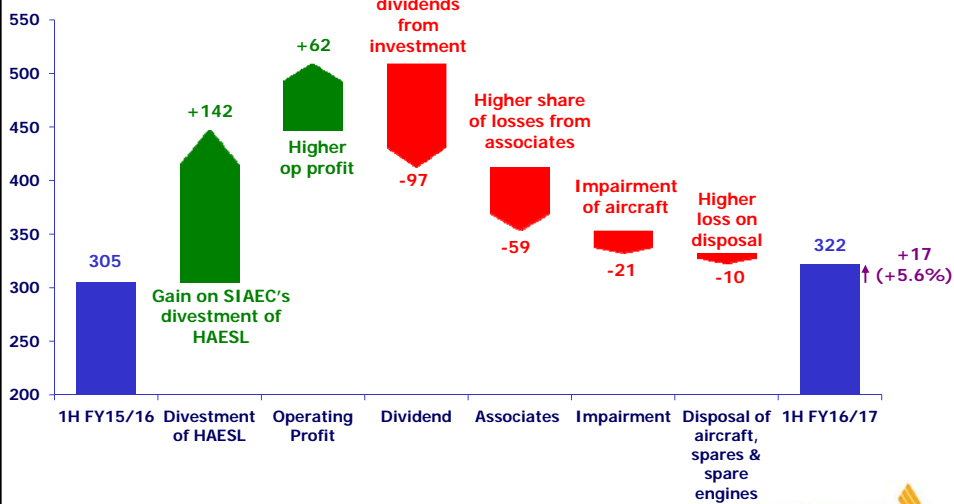
**Year-on-Year
↑ \$17M
+5.6%**

Slide 17



GROUP PROFIT ATTRIBUTABLE TO OWNERS OF PARENT

(\$ million)



Slide 18



PER SHARE DATA

	<u>1H FY16/17</u>	<u>1H FY15/16</u>
EBITDAR Per Share (\$)	1.43	1.39
Earnings Per Share (¢)	27.2	26.1
Interim Dividend Per Share (¢)	9.0	10.0
	<u>At 30 Sep'16</u>	<u>At 31 Mar'16</u>
Net Asset Value Per Share (\$)	11.20	10.96

Slide 19

