

FIRST TO FLY  
DREAMLINER  
787-10



**86<sup>TH</sup> SIA BUSINESS MEETING**  
Q4 and FY2017-18 Results  
17 May 2018

# **THE PARENT AIRLINE Q4 AND FY17/18 RESULTS**

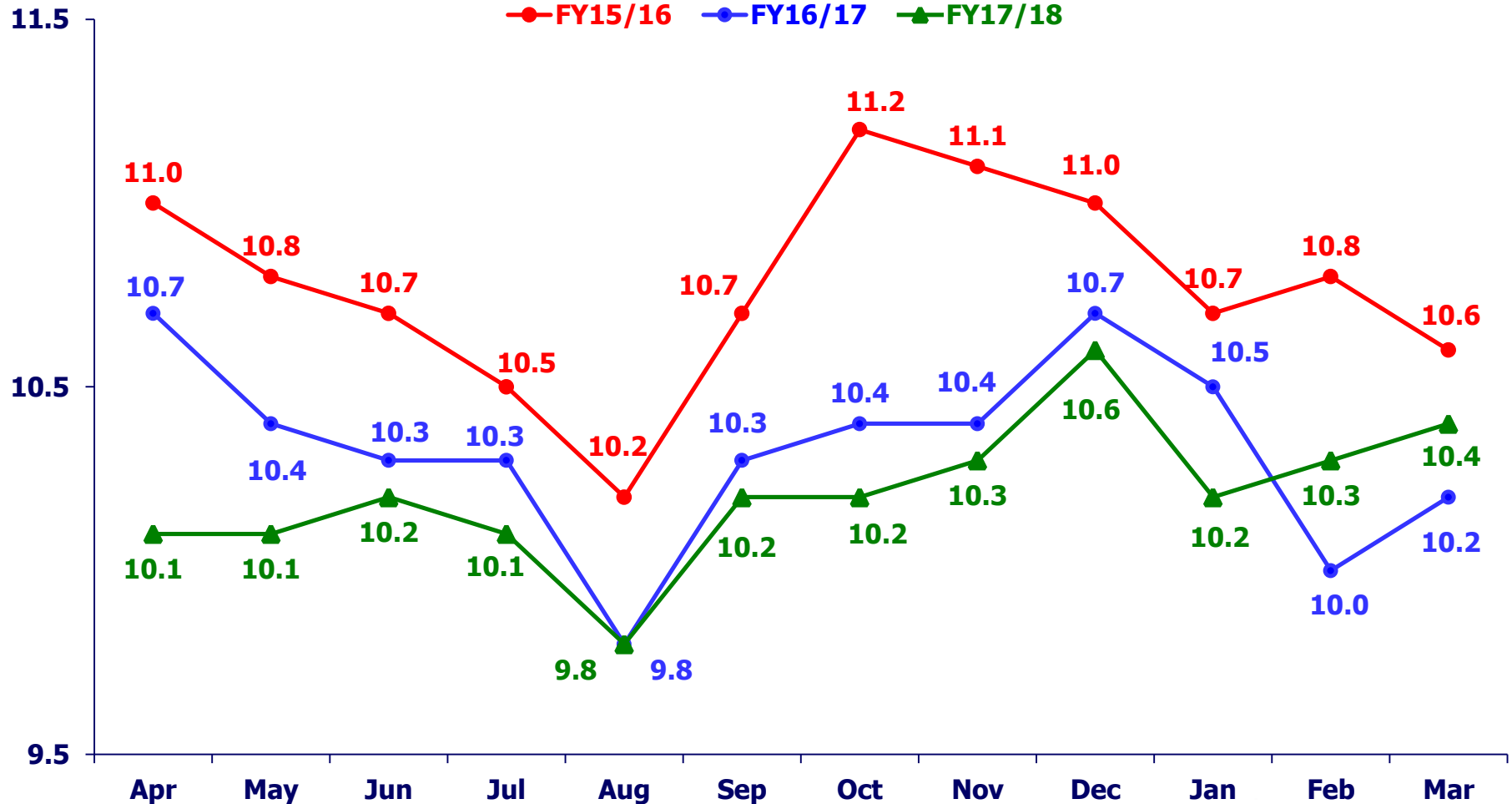
# THE PARENT AIRLINE COMPANY OPERATING PERFORMANCE

	Q4 FY17/18	% Change	FY17/18	% Change
Available Seat-KM (million)	29,074	+0.8	118,127	+0.4
Revenue Pax-KM (million)	23,587	+1.4	95,855	+3.2
Passenger Load Factor (%)	81.1	+0.5 pt	81.1	+2.1 pts
Passenger Yield (¢/pkm)	10.3	+1.0	10.2	-1.0
Revenue per ASK (¢/ask)	8.4	+2.4	8.3	+1.2
Passenger Unit Cost (¢/ask)	8.7	-1.1	8.4	+1.2
Passenger Unit Ex-Fuel Cost (¢/ask)	6.0	-3.2	5.9	+1.7
Passenger Breakeven Load Factor (%)	84.5	-1.8 pts	82.4	+1.8 pts

# THE PARENT AIRLINE COMPANY OPERATING PERFORMANCE

## Monthly Pax Yields

(¢/pkm)



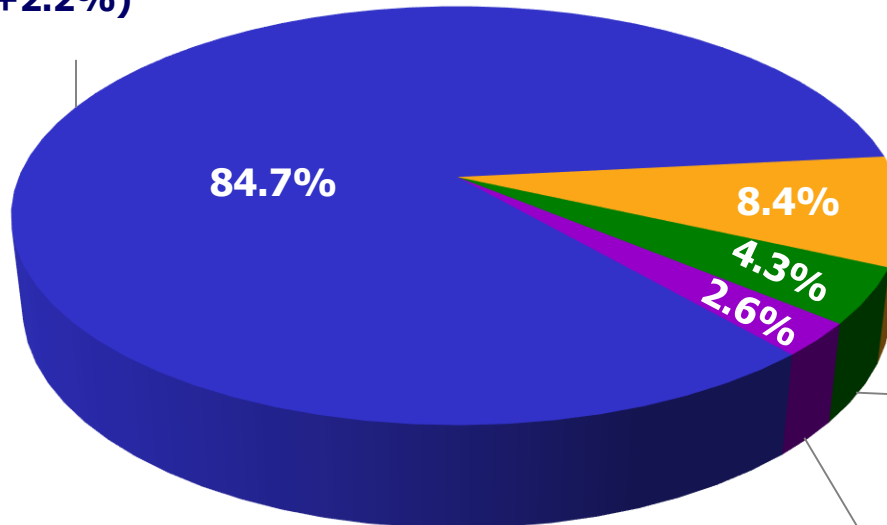
# THE PARENT AIRLINE COMPANY RESULTS

	Q4 FY17/18 \$million	Better/ (Worse) \$million	FY17/18 \$million	Better/ (Worse) \$million
<b>Total Revenue</b>	<b>2,934</b>	<b>221</b>	<b>11,584</b>	<b>490</b>
<b>Total Expenditure</b>	<b>2,797</b>	<b>(43)</b>	<b>10,881</b>	<b>(173)</b>
- <i>Net Fuel Cost</i>	771	(25)	2,971	(77)
<i>Fuel Cost</i>	835	(98)	3,044	(419)
<i>Fuel Hedging Gain</i>	(64)	73	(73)	342
- <i>Ex-fuel Cost</i>	2,026	(18)	7,910	(96)
<b>Operating Profit</b>	<b>137</b>	<b>178</b>	<b>703</b>	<b>317</b>
<b>Operating Profit Margin (%)</b>	<b>4.7</b>	<b>6.2 pts</b>	<b>6.1</b>	<b>2.6 pts</b>

# THE PARENT AIRLINE COMPANY REVENUE BREAKDOWN

FY17/18 (\$'M)

Passenger Flown Revenue  
9,816.6  
(+209.7, +2.2%)



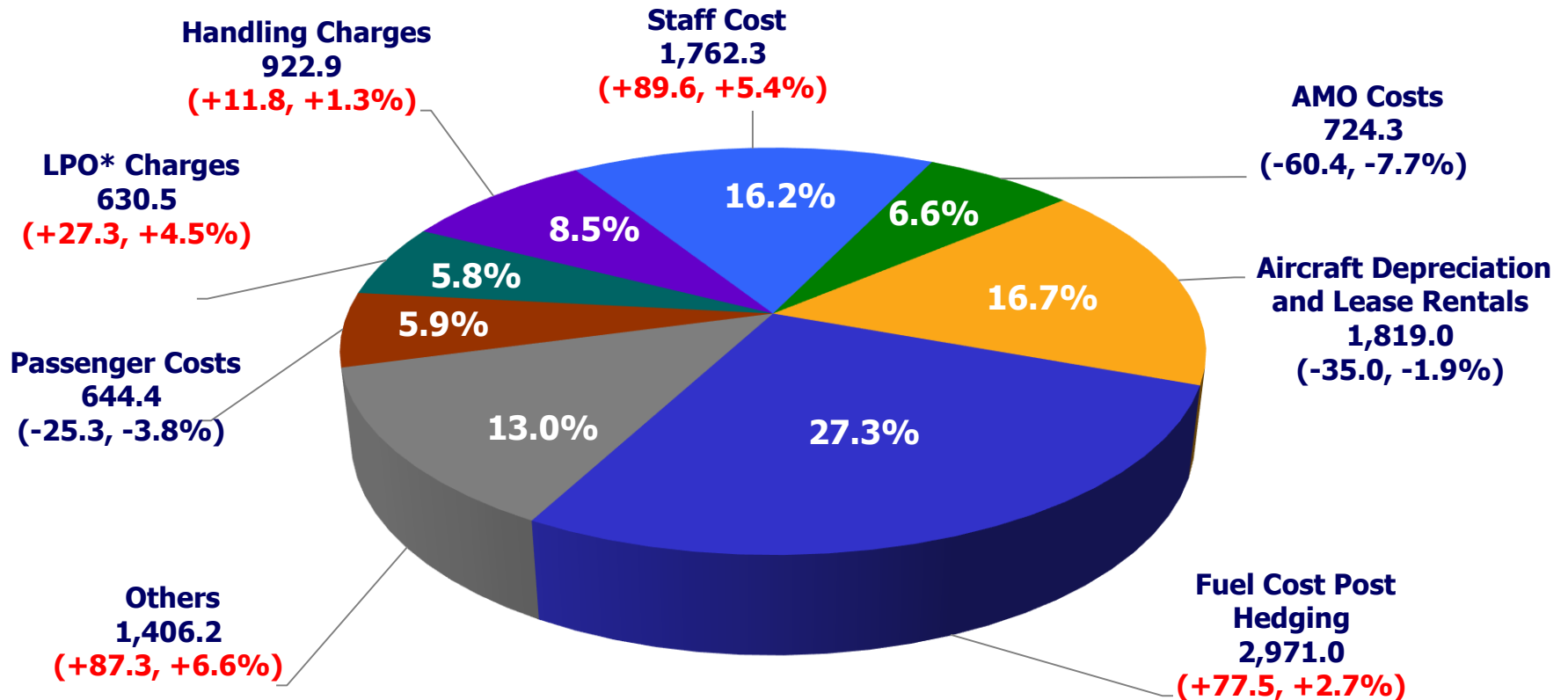
Bellyhold  
Revenue from  
SIA Cargo  
975.1  
(+71.7, +7.9%)

Passenger Other  
Revenue  
493.4  
(+83.1, +20.3%)

Others  
298.7  
(+125.1, +72.1%)

# THE PARENT AIRLINE COMPANY COST COMPOSITION

**FY17/18 (\$'M)**

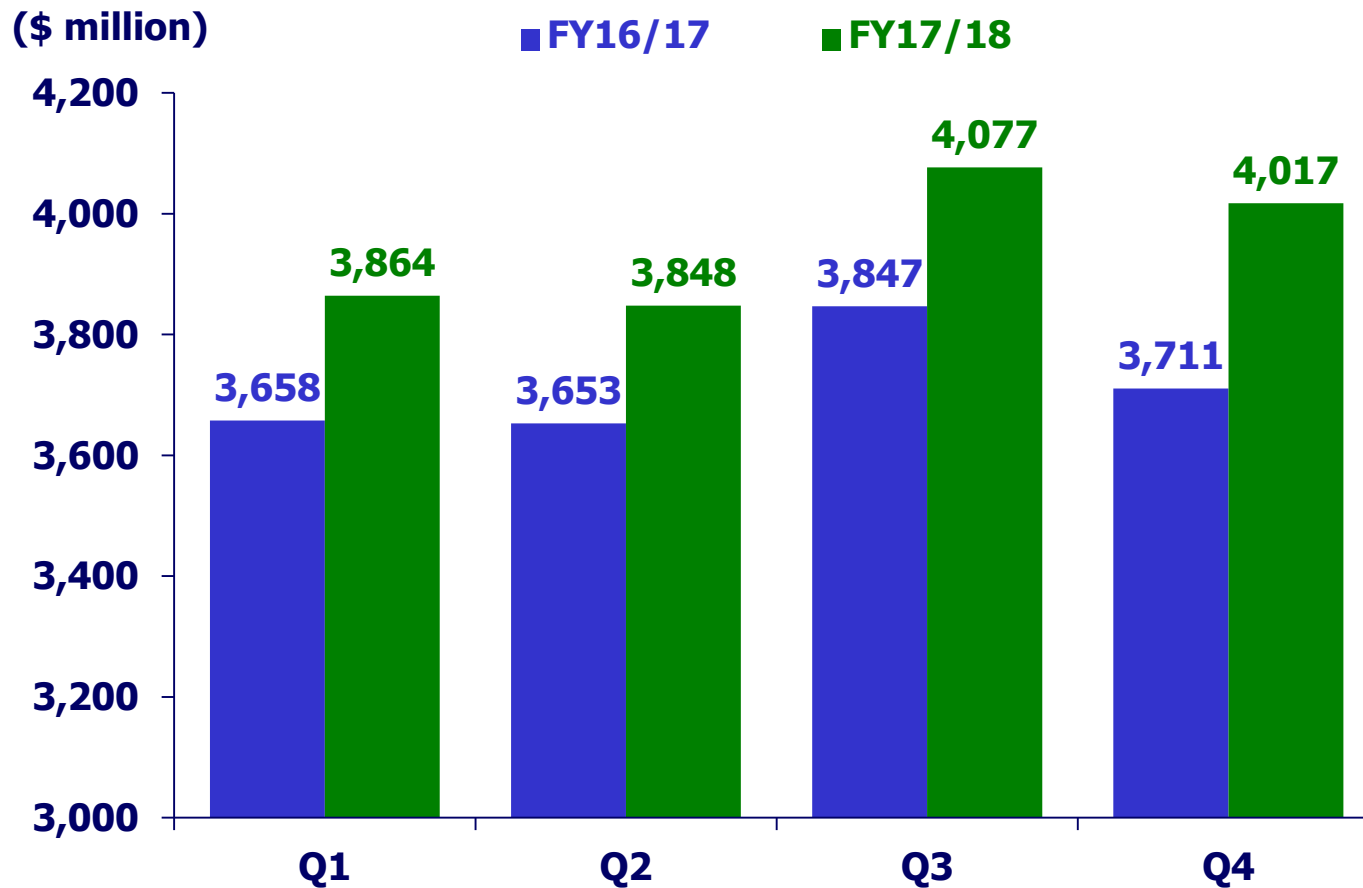


*\*Landing, Parking and Overflying*

# **SIA GROUP Q4 AND FY17/18 RESULTS**



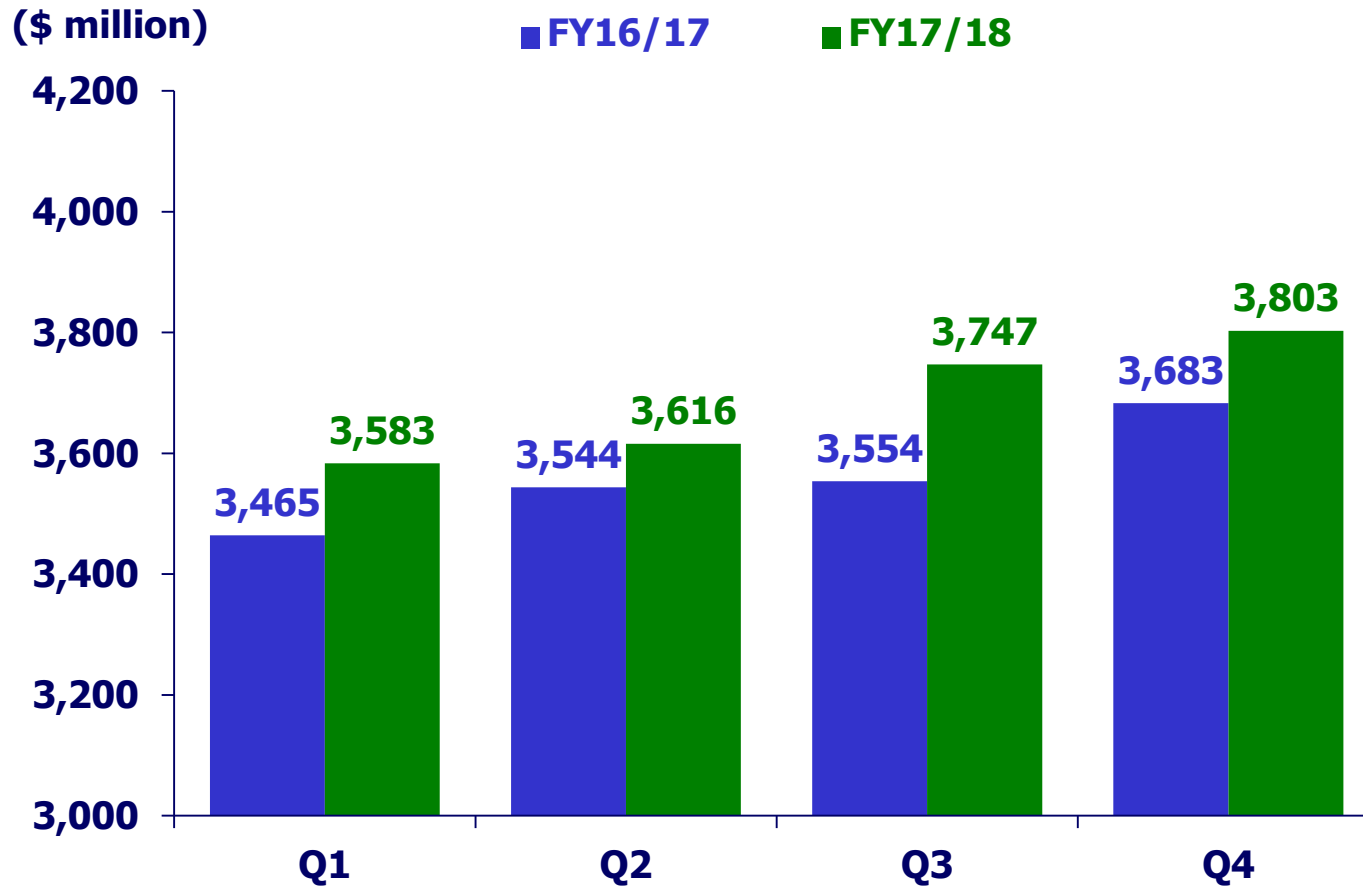
# GROUP REVENUE



**FY17/18  
Revenue  
\$15,806M**

**Year-on-Year  
↑ \$937M  
+6.3%**

# GROUP EXPENDITURE

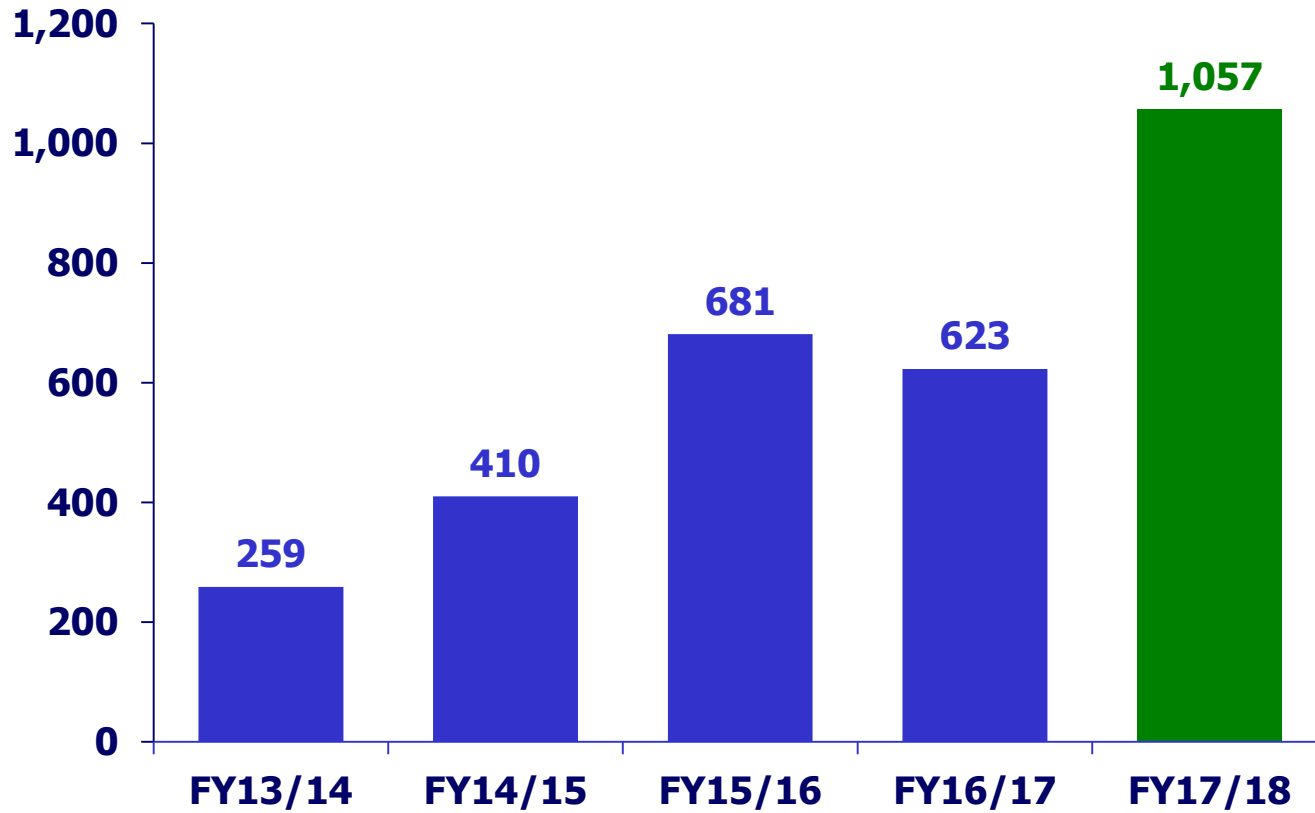


**FY17/18  
Expenditure  
\$14,749M**

**Year-on-Year  
↑ \$503M  
+3.5%**

# GROUP OPERATING PROFIT

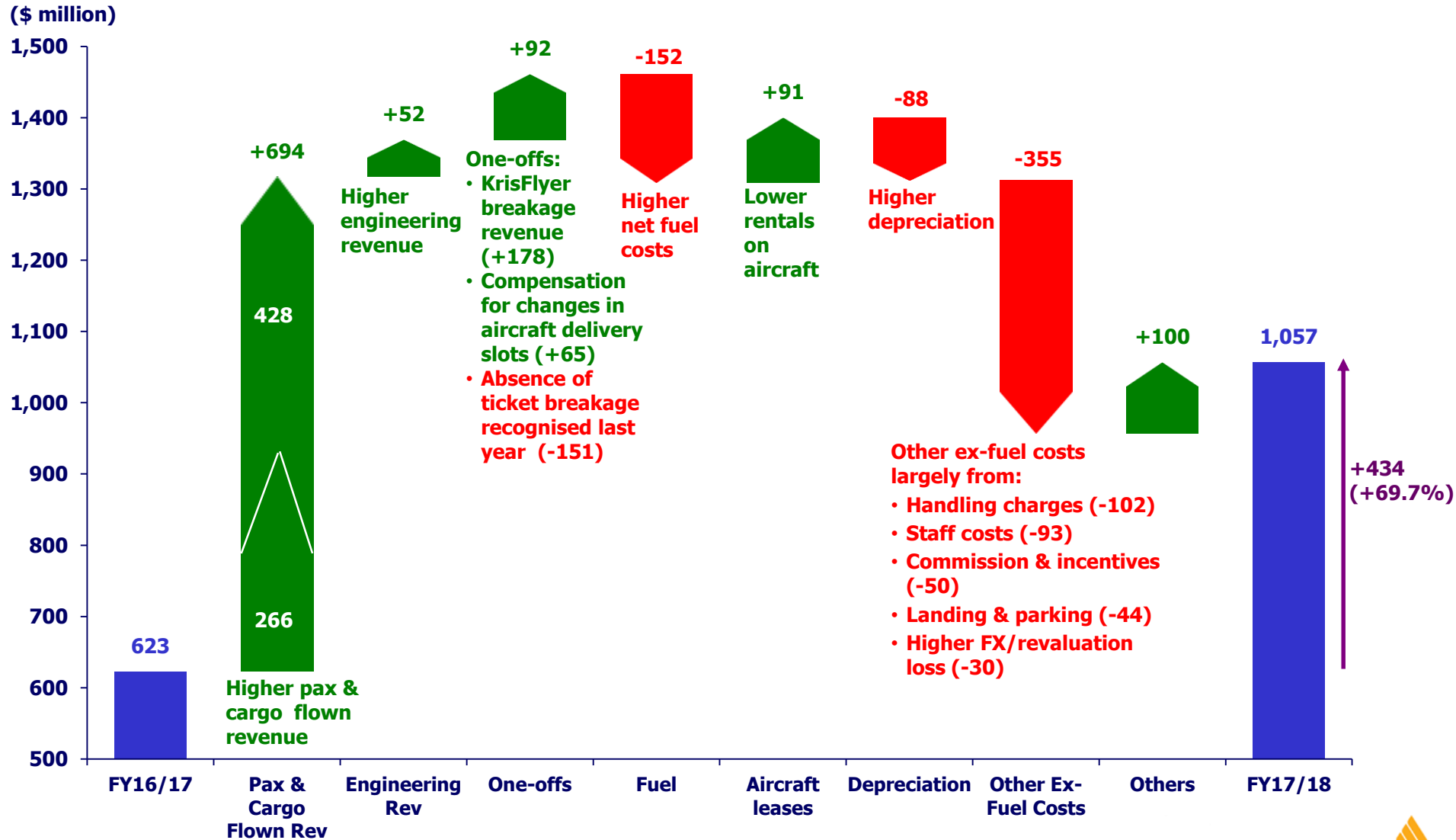
(\$ million)



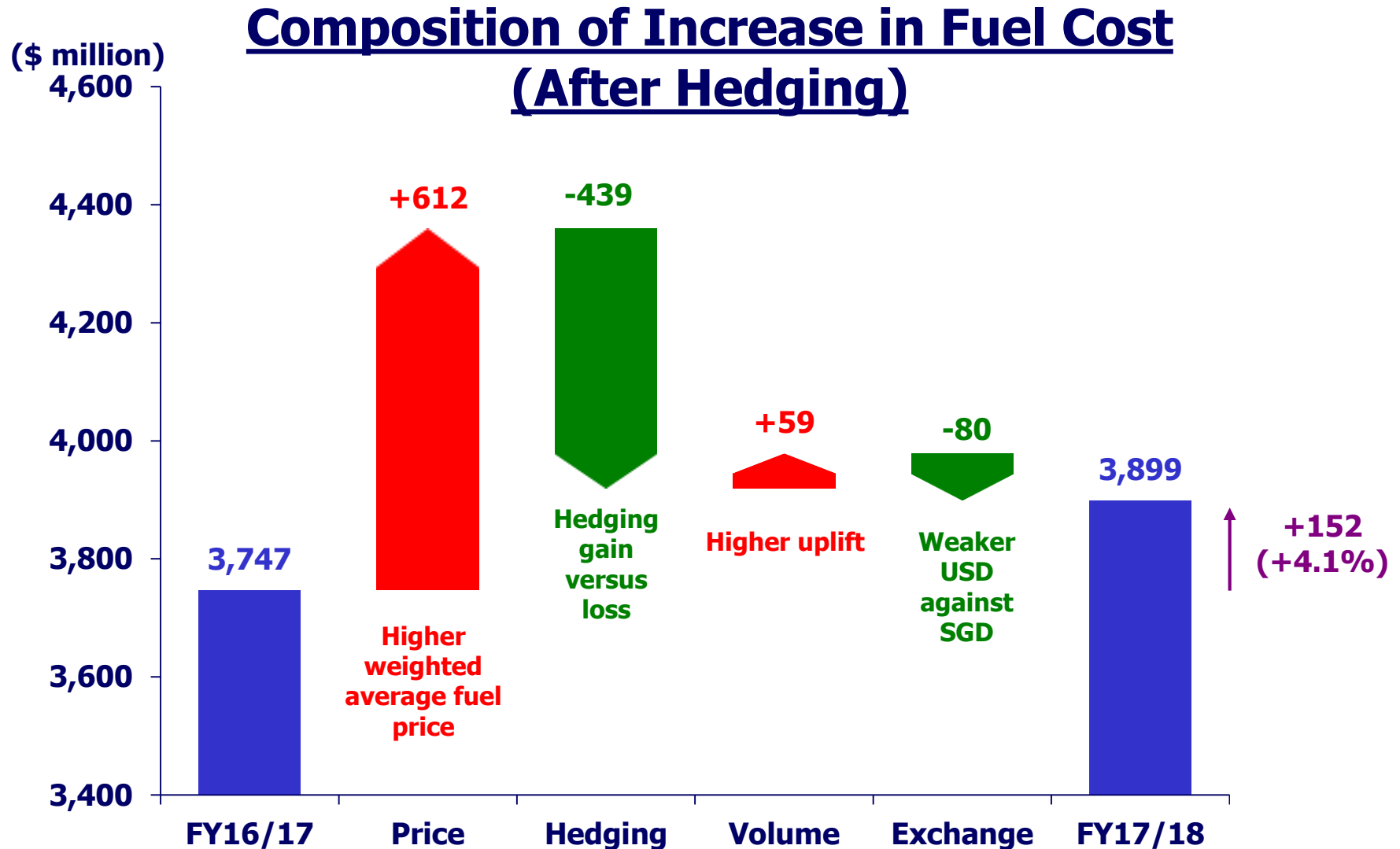
**FY17/18  
Op Profit  
\$1,057M**

**Year-on-Year**  
↑ **\$434M**  
**+69.7%**

# GROUP OPERATING PROFIT



# GROUP FUEL EXPENDITURE



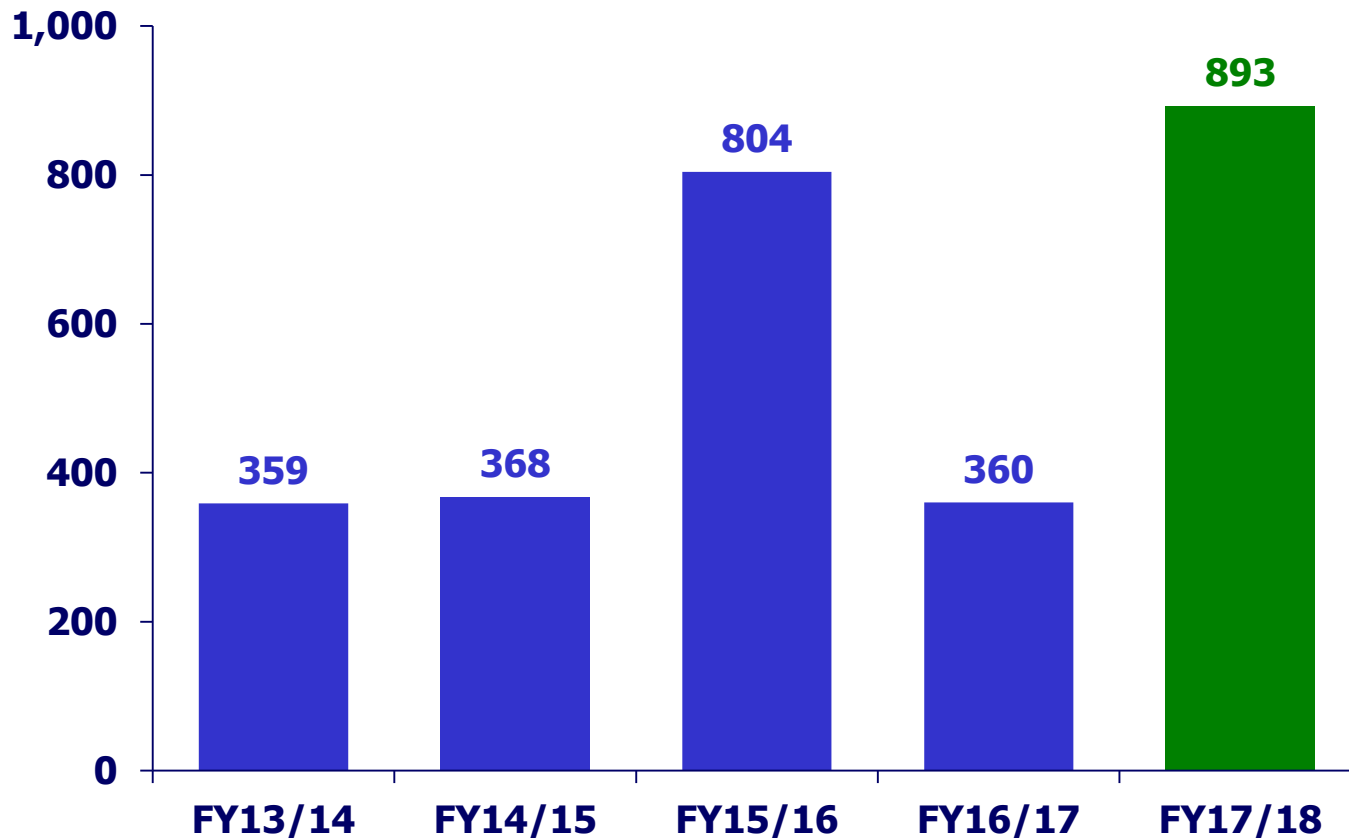
# CONTRIBUTION TO GROUP OPERATING PROFIT

---

<u>(\$ million)</u>	<u>FY17/18</u>	<u>FY16/17</u>	<u>Change</u>	<u>% Change</u>
<b>Singapore Airlines</b>	<b>703</b>	<b>386</b>	<b>317</b>	<b>+ 82.1</b>
<b>SilkAir</b>	<b>43</b>	<b>101</b>	<b>-58</b>	<b>- 57.4</b>
<b>Scoot</b>	<b>77</b>	<b>67</b>	<b>10</b>	<b>+ 14.9</b>
<b>SIA Cargo</b>	<b>148</b>	<b>3</b>	<b>145</b>	<b>n.m.</b>
<b>SIAEC</b>	<b>76</b>	<b>72</b>	<b>4</b>	<b>+ 5.6</b>

# GROUP PROFIT ATTRIBUTABLE TO OWNERS OF PARENT

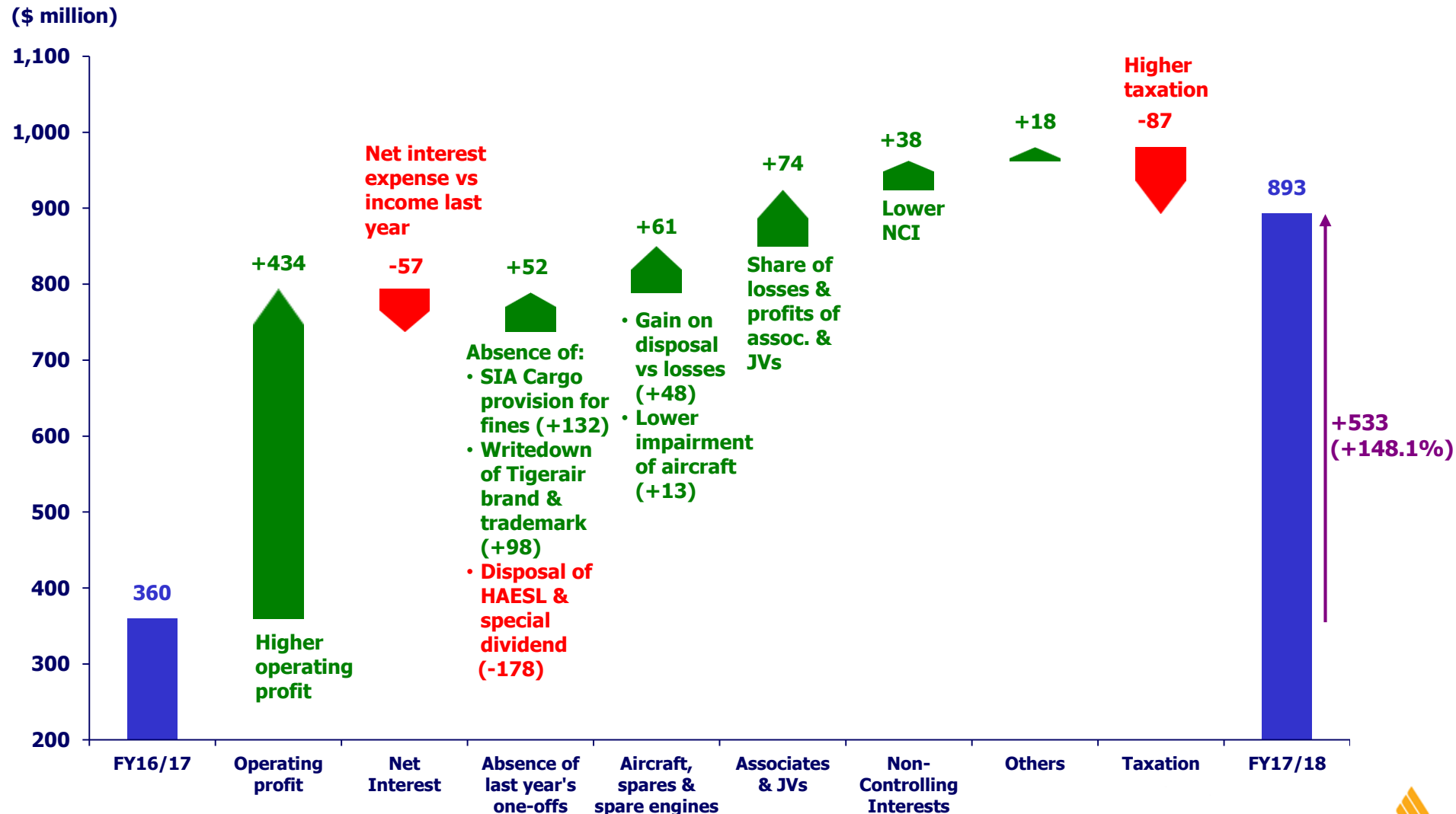
(\$ million)



**FY17/18  
Net Profit  
\$893M**

**Year-on-Year  
↑ \$533M  
+148.1%**

# GROUP PROFIT ATTRIBUTABLE TO OWNERS OF PARENT





# DIVIDENDS – FY17/18

---

	<u>FY17/18</u>	<u>FY16/17</u>
<b>Earnings Per Share (¢)</b>	<b>75.5</b>	<b>30.5</b>
<b>Interim Dividend Per Share (¢)</b>	<b>10.0</b>	<b>9.0</b>
<b>Proposed Final Dividend Per Share (¢)</b>	<b>30.0</b>	<b>11.0</b>
<b>Total Dividend Per Share (¢)</b>	<b>40.0</b>	<b>20.0</b>

FIRST TO FLY  
DREAMLINER  
787-10

---



**THANK YOU**