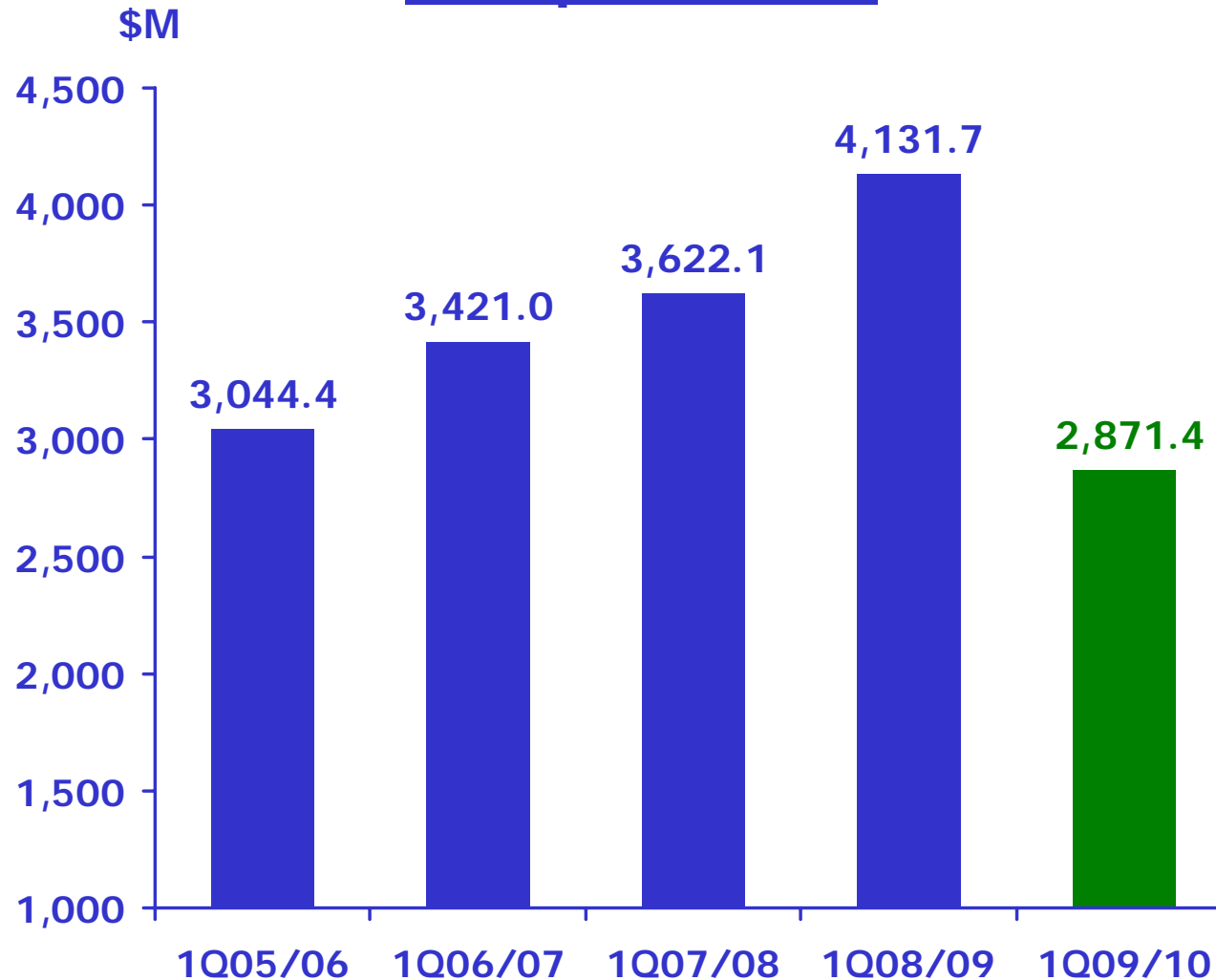


# **SIA GROUP STAFF COMMUNICATION**

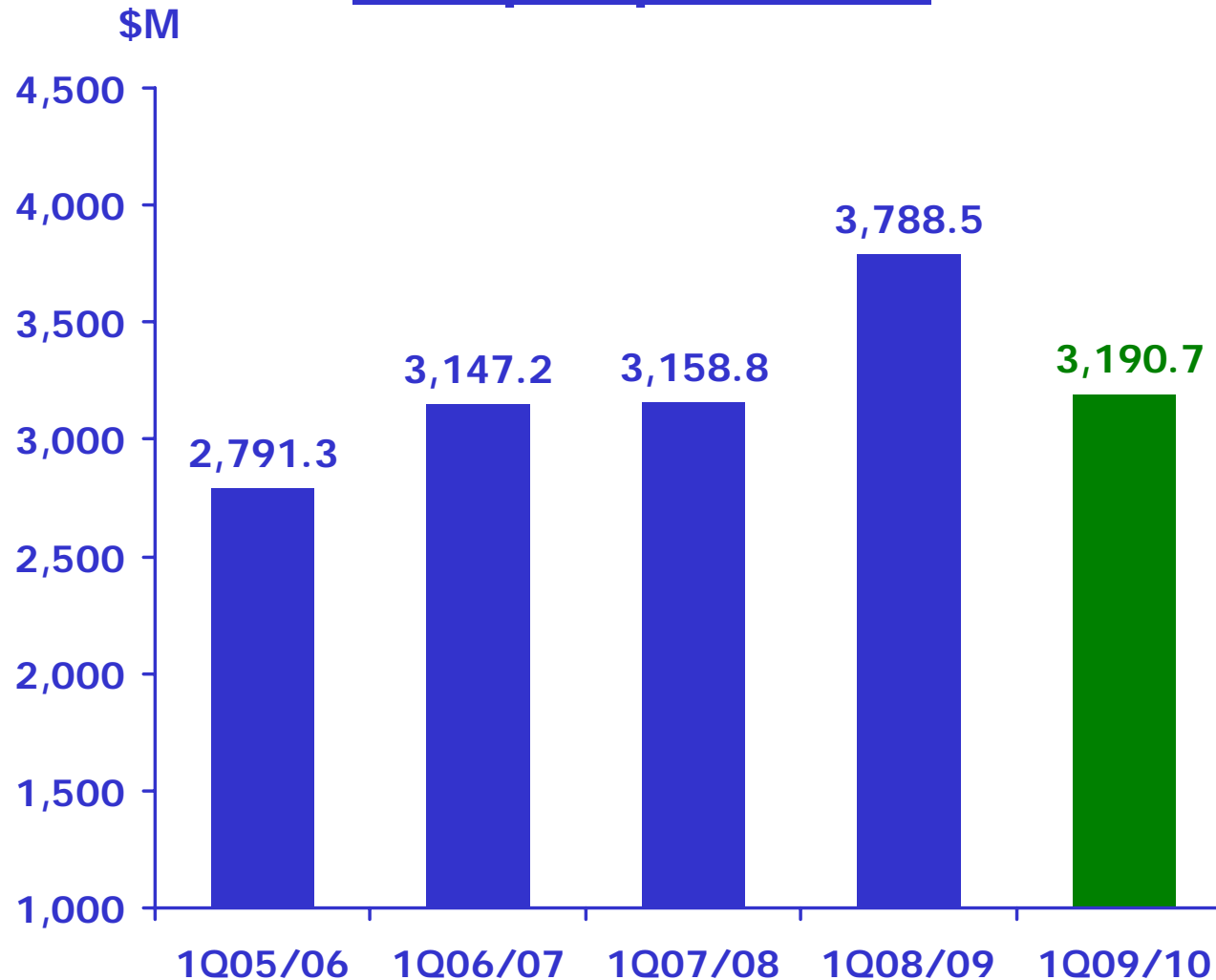
**For Q1 FY2009-10  
Ended 30 June 2009**

### Group Revenue



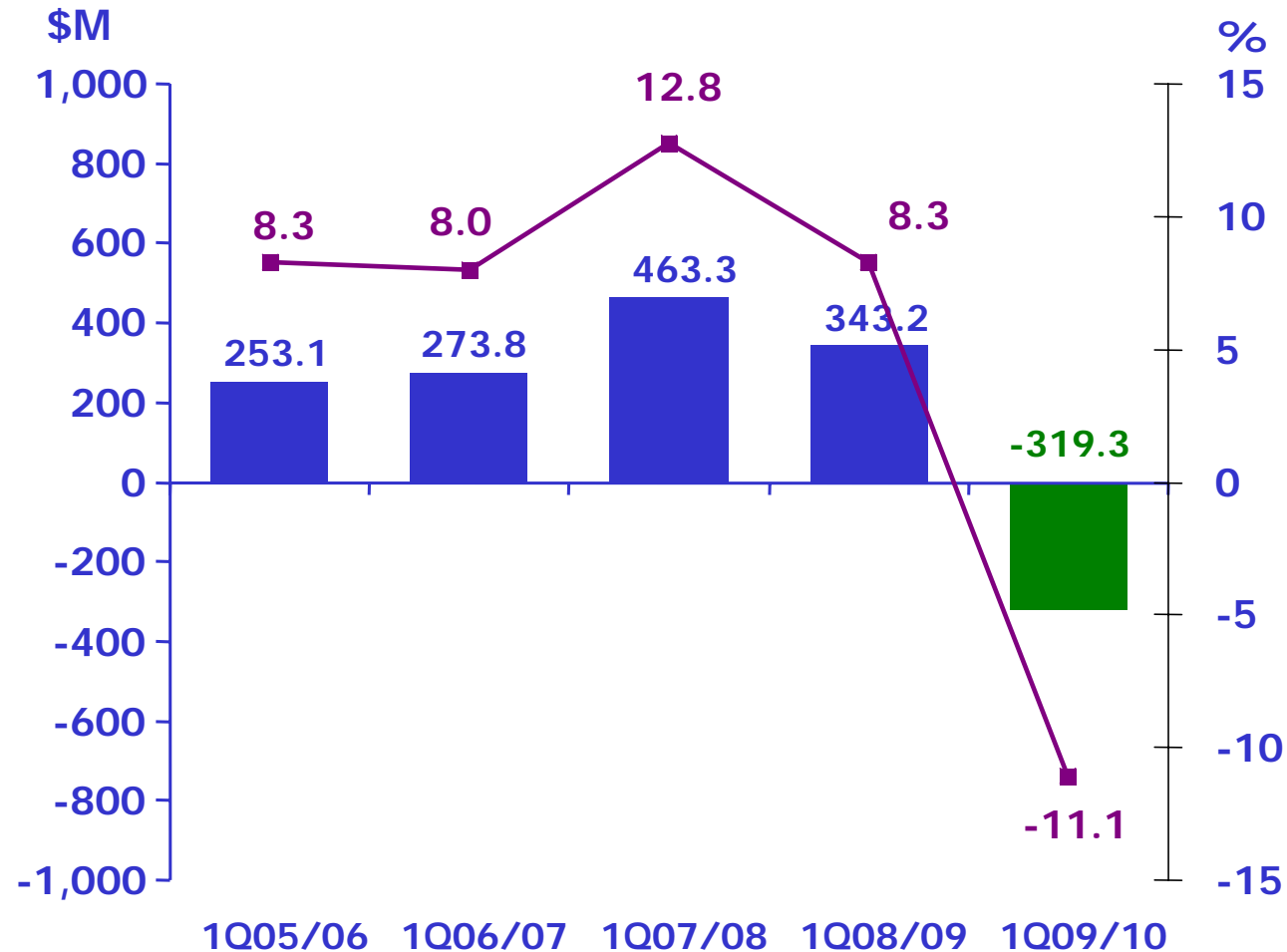
**Q1 2009-10**  
 **30.5%**

### Group Expenditure



Q1 2009-10  
↓ 15.8%

### Group Operating Profit/(Loss)



**Operating Loss**  
 **\$662.5M**

**Operating Loss Margin**  
**-19.4% pts**

### Group Operating Profit/(Loss)

	<u>Q1 2009-10</u> <u>(\$ M)</u>	<u>Q1 2008-09</u> <u>(\$ M)</u>	<u>Better/</u> <u>(Worse)</u> <u>(\$ M)</u>	<u>Better/</u> <u>(Worse)</u> <u>(%)</u>
SIA	(271.4)	265.4	(536.8)	n.m.
SATS	43.7	38.2	5.5	14.4
SIAEC	12.3	16.4	(4.1)	(25.0)
SIA Cargo	(103.5)	4.5	(108.0)	n.m.
SilkAir	(3.4)	10.0	(13.4)	n.m.

# PARENT AIRLINE COMPANY

## Q1 2009-10

	<u>Q1</u> <u>2009-10</u>	<u>Q1</u> <u>2008-09</u>	<u>Better/</u> <u>(Worse)</u> <u>%</u>
Total Revenue (\$ M)	2,221.8	3,347.8	(33.6)
Total Expenditure (\$ M)	2,493.2	3,082.4	19.1
Operating (Loss)/Profit (\$ M)	(271.4)	265.4	n.m.
Operating (Loss)/Profit Margin (%)	(12.2)	7.9	(20.1) pts

# PARENT AIRLINE COMPANY

## Q1 2009-10

	<u>Q1</u> <u>2009-10</u>	<u>Q1</u> <u>2008-09</u>	<u>Change</u> <u>%</u>
Revenue Passenger-KM (M)	18,655.0	23,190.9	-19.6
Available Seat-KM (M)	26,072.6	30,225.4	-13.7
Passenger Load Factor (%)	71.6	76.7	- 5.1 pts

# PARENT AIRLINE COMPANY

## Q1 2009-10

	<u>Q1</u> <u>2009-10</u>	<u>Q1</u> <u>2008-09</u>	<u>Change</u> <u>%</u>
Pax Yield – include fuel surcharge (¢/pkm)	10.2	12.4	-17.7
Passenger Unit Cost (¢/pkm)	8.6	8.7	-1.1
Passenger Breakeven Load Factor (%)	84.3	70.2	+ 14.1 pts
Passenger Load Factor Spread (%)	-12.7	+6.5	- 19.2 pts



# PARENT AIRLINE COMPANY

## Q1 2009-10

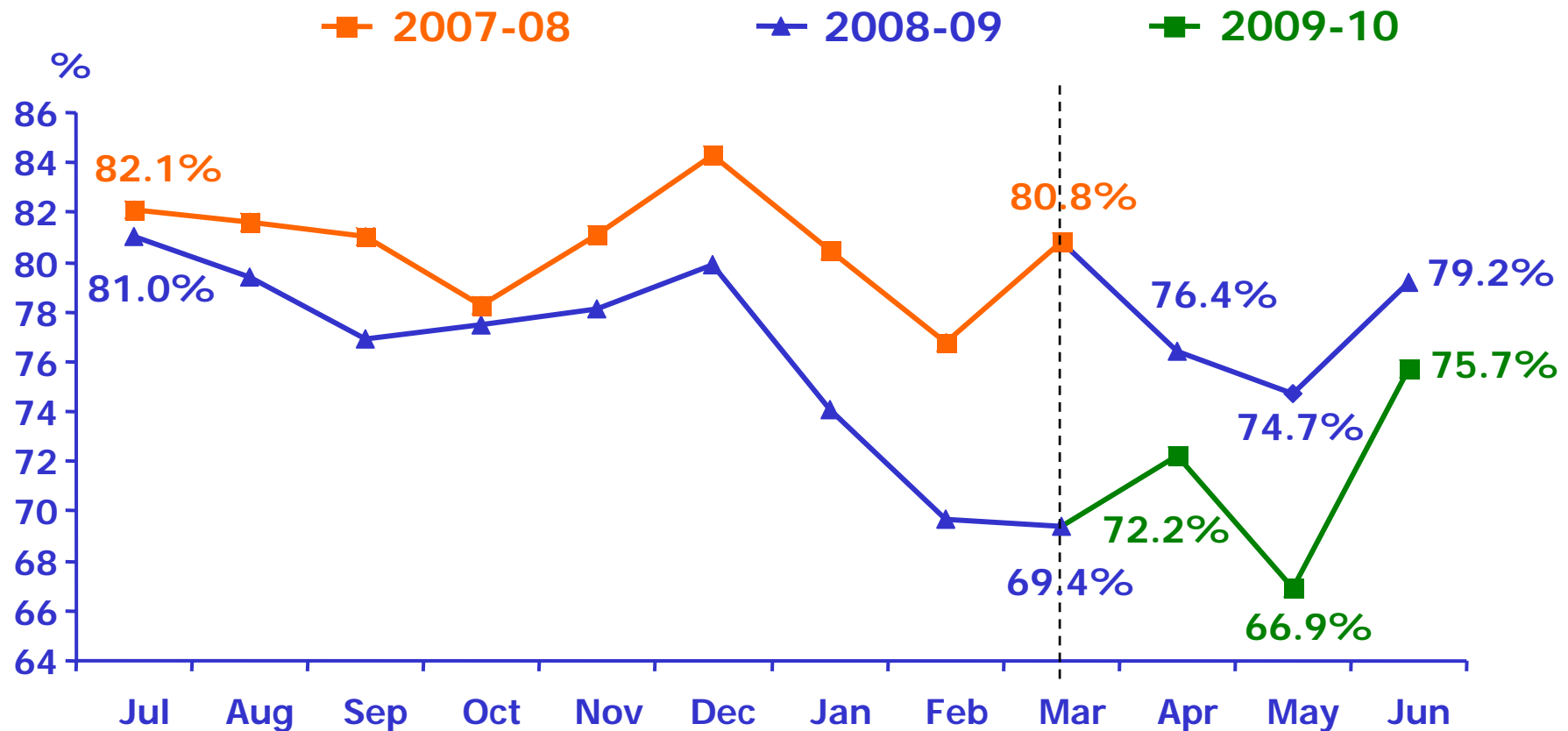
### Revenue Passenger-KM (% change year-on-year)



# PARENT AIRLINE COMPANY

## Q1 2009-10

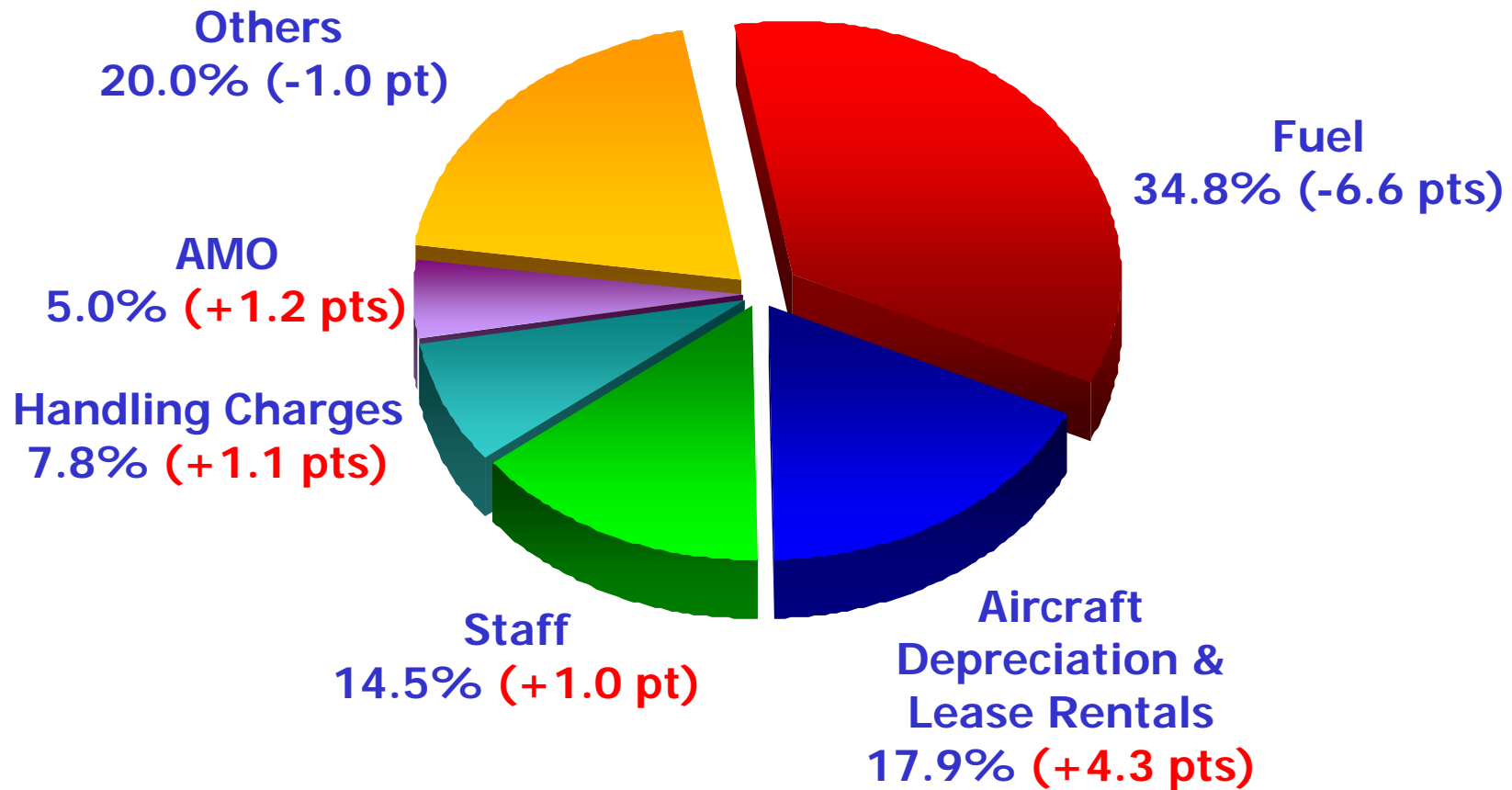
### Monthly Passenger Load Factor



# PARENT AIRLINE COMPANY

## Q1 2009-10

### Cost Composition



Thank You