

SIA GROUP FINANCIAL RESULTS

**For FY2011-12
Ended 30 June 2011**

197200078R

PARENT AIRLINE COMPANY Q1 FY2011-2012 Results

197200078R

PARENT AIRLINE COMPANY

Q1 2011-12

SINGAPORE AIRLINES 

	<u>Q1</u> <u>2011-12</u>	<u>Q1</u> <u>2010-11</u>	<u>Better/</u> <u>(Worse)</u> <u>(\$M)</u>	<u>Better/</u> <u>(Worse)</u> <u>%</u>
Total Revenue (\$ M)	2,902.4	2,776.1	126.3	4.5
Total Expenditure (\$ M)	2,938.0	2,640.2	(297.8)	(11.3)
-- Fuel cost	1,214.3	874.8	(339.5)	(38.8)
-- Fuel hedging (gain)/loss	(9.7)	63.9	73.6	n.m.
-- Non-fuel expenditure	1,733.4	1,701.5	(31.9)	(1.9)
Operating (Loss)/Profit (\$ M)	(35.6)	135.9	(171.5)	n.m.
Operating (Loss)/Profit Margin (%)	(1.2)	4.9	-	(6.1 pts)

Slide 3

SINGAPORE AIRLINES 

PARENT AIRLINE COMPANY

Q1 2011-12

SINGAPORE AIRLINES 

	<u>Q1</u> <u>2011-12</u>	<u>Q1</u> <u>2010-11</u>	<u>Change</u> <u>%</u>
Revenue Passenger-km (M)	21,014.1	20,303.4	+3.5
Available Seat-km (M)	27,780.9	25,903.2	+7.2
Passenger Load Factor (%)	75.6	78.4	-2.8 pts

Slide 4

SINGAPORE AIRLINES 

PARENT AIRLINE COMPANY Q1 2011-12

SINGAPORE AIRLINES 

	<u>Q1</u> <u>2011-12</u>	<u>Q1</u> <u>2010-11</u>	<u>Change</u> <u>%</u>
Pax Yield – include fuel surcharge (¢/pkm)	11.8	11.7	+0.9
Passenger Unit Cost (¢/ask)	9.2	9.0	+2.2
Passenger Breakeven Load Factor (%)	78.0	76.9	+1.1 pts

Slide 5

SINGAPORE AIRLINES 

PARENT AIRLINE COMPANY Q1 2011-12

SINGAPORE AIRLINES 

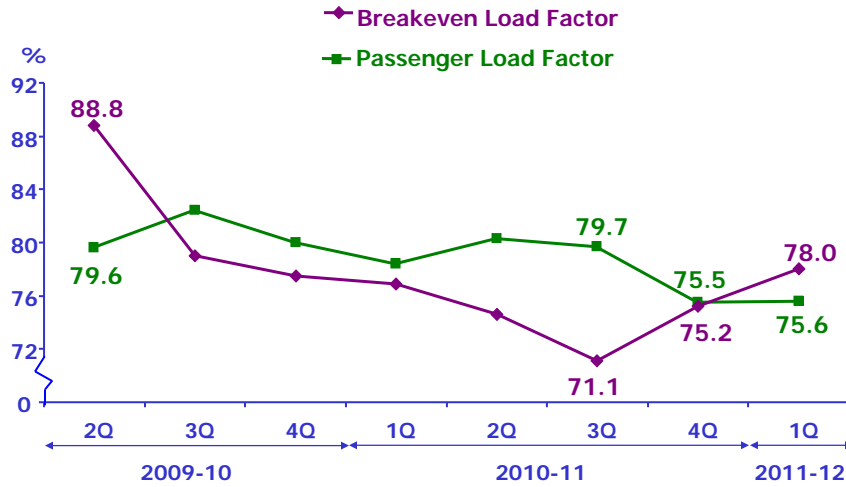
	<u>Q1</u> <u>2011-12</u>	<u>Q1</u> <u>2010-11</u>	<u>Change</u>
Passenger Load Factor (%)	75.6	78.4	-2.8 pts
Passenger Breakeven Load Factor (%)	78.0	76.9	+1.1 pts
Passenger Load Factor Spread (%)	-2.4	+1.5	-3.9 pts

Slide 6

SINGAPORE AIRLINES 

PARENT AIRLINE COMPANY Q1 2011-12

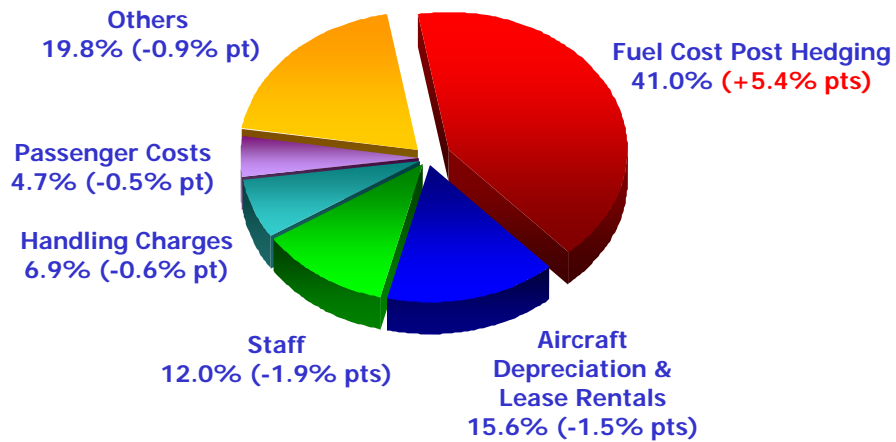
Passenger Load Factor vs Breakeven Load Factor



Slide 7

PARENT AIRLINE COMPANY Q1 2011-12

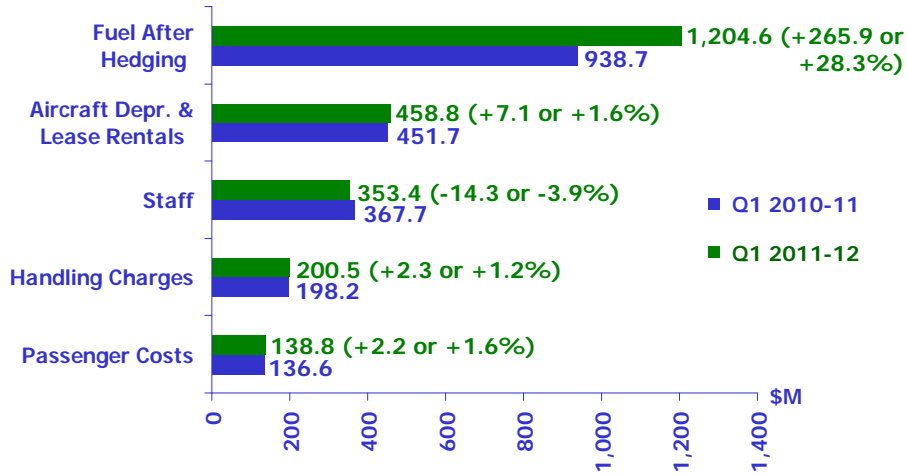
Cost Composition



Slide 8

PARENT AIRLINE COMPANY Q1 2011-12

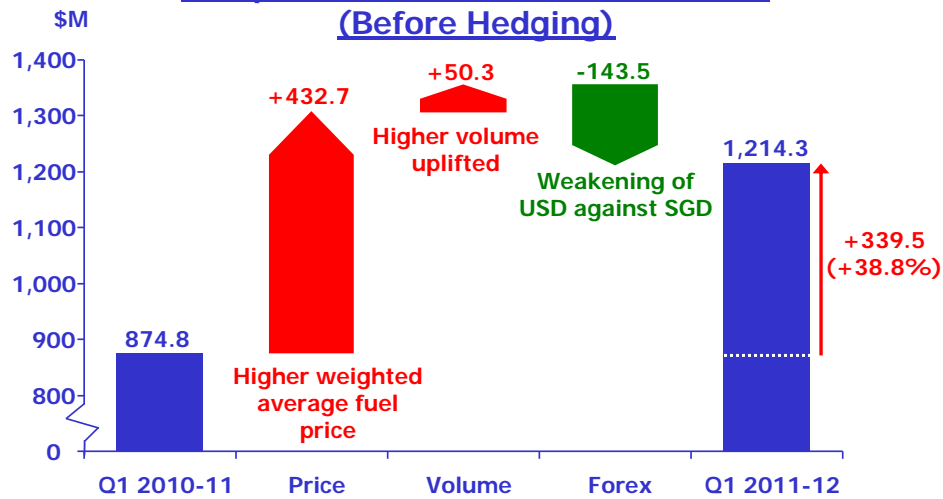
Top 5 Expenditure Breakdown



Slide 9

PARENT AIRLINE COMPANY Q1 2011-12

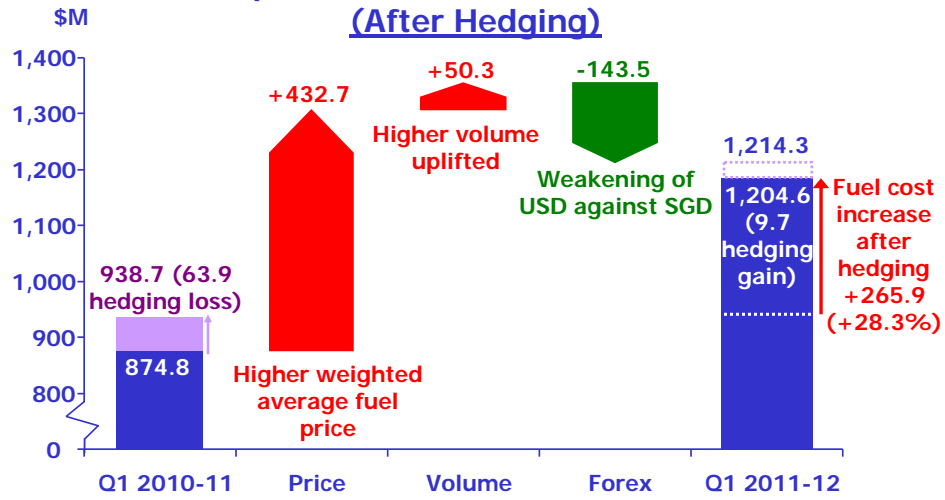
Composition of Increase in Fuel Cost (Before Hedging)



Slide 10

PARENT AIRLINE COMPANY Q1 2011-12

Composition of Increase in Fuel Cost (After Hedging)

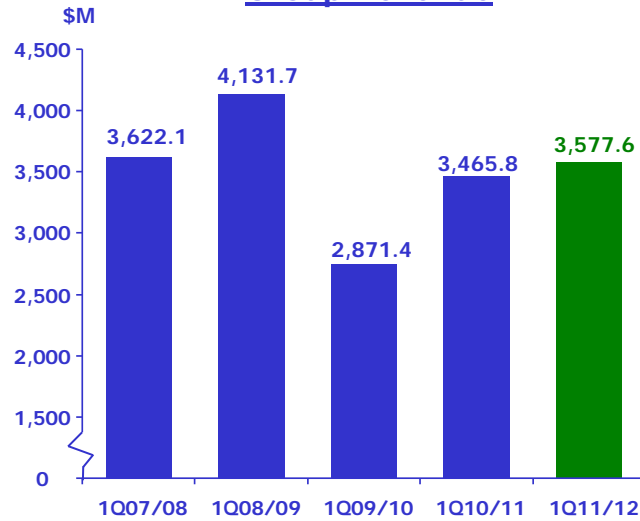


Slide 11

THE GROUP Q1 FY2011-2012 Results

SIA GROUP Q1 2011-12

Group Revenue

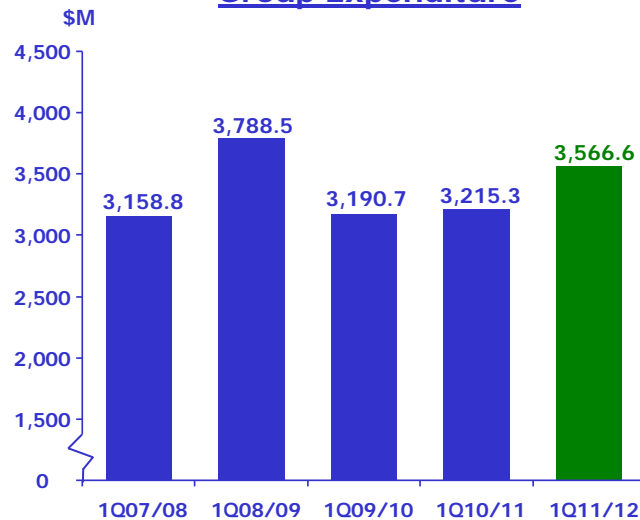


Q1 2011-12 vs
Q1 2010-11
↑ 111.8M
(+3.2%)

Slide 13

SIA GROUP Q1 2011-12

Group Expenditure

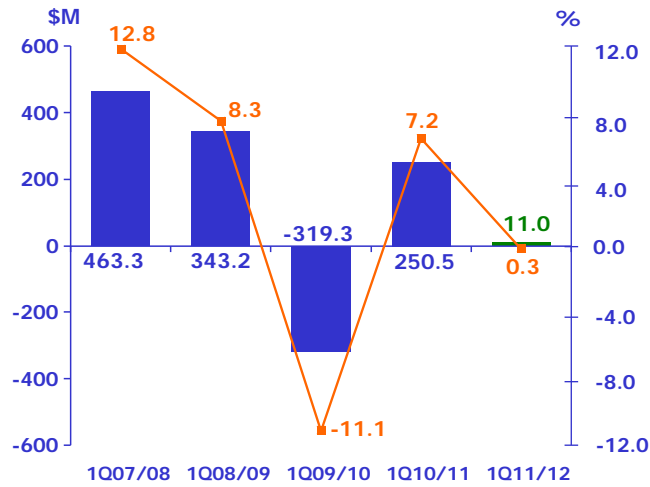


Q1 2011-12 vs
Q1 2010-11
↑ 351.3M
(+10.9%)

Slide 14

SIA GROUP Q1 2011-12

Group Operating Profit



Operating Profit
 **\$239.5M**
(-95.6%)

Operating Profit Margin
-6.9% pts

Slide 15

SIA GROUP Q1 2011-12

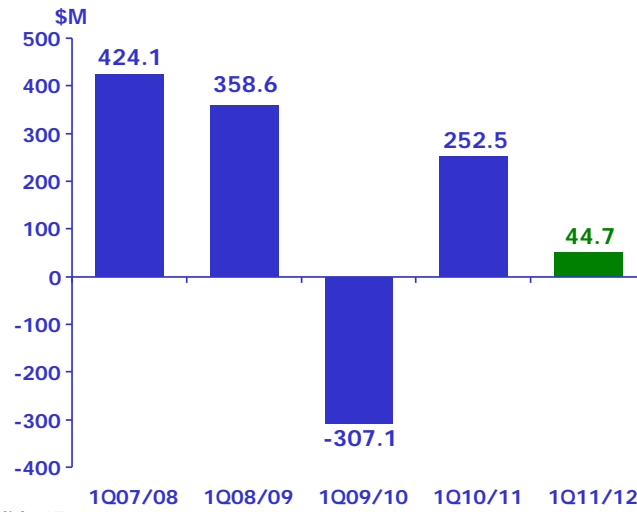
Group Operating Profit

	<u>Q1 11/12</u> <u>(\$ M)</u>	<u>Q1 10/11</u> <u>(\$ M)</u>	<u>Better/ (Worse)</u> <u>(\$ M)</u>
SIA	(35.6)	135.9	(171.5)
SIA Cargo	(13.5)	59.7	(73.2)
SIAEC	34.7	36.2	(1.5)
SilkAir	20.9	15.3	5.6
Others	4.5	3.4	1.1
Group Total	11.0	250.5	(239.5)

Slide 16

SIA GROUP Q1 2011-12

Group Net Profit



Q1 2011-12 vs
Q1 2010-11
↓ 207.8M
(-82.3%)

Thank You