

SIA GROUP FINANCIAL RESULTS

For Q1 FY2014-15
Ended 30 June 2014

197200078R

PARENT AIRLINE COMPANY Q1 FY2014-15

PARENT AIRLINE COMPANY Q1 2014-15

SINGAPORE AIRLINES 

	<u>Q1</u> <u>FY14/15</u>	<u>Q1</u> <u>FY13/14</u>	<u>Change</u> <u>%</u>
Available Seat-KM (M)	30,263.2	30,008.7	+0.8
Revenue Passenger-KM (M)	23,499.4	23,397.6	+0.4
Passenger Load Factor (%)	77.7	78.0	-0.3 pt
Pax Yield – include fuel surcharge (¢/pkm)	10.9	11.1	-1.8
Passenger Unit Cost (¢/ask)	8.7	9.1	-4.4
Passenger Breakeven Load Factor (%)	79.8	82.0	-2.2 pts
Passenger Load Factor Spread (% pts)	-2.1	-4.0	-1.9 pts

Slide 3

SINGAPORE AIRLINES 

PARENT AIRLINE COMPANY Q1 2014-15

SINGAPORE AIRLINES 

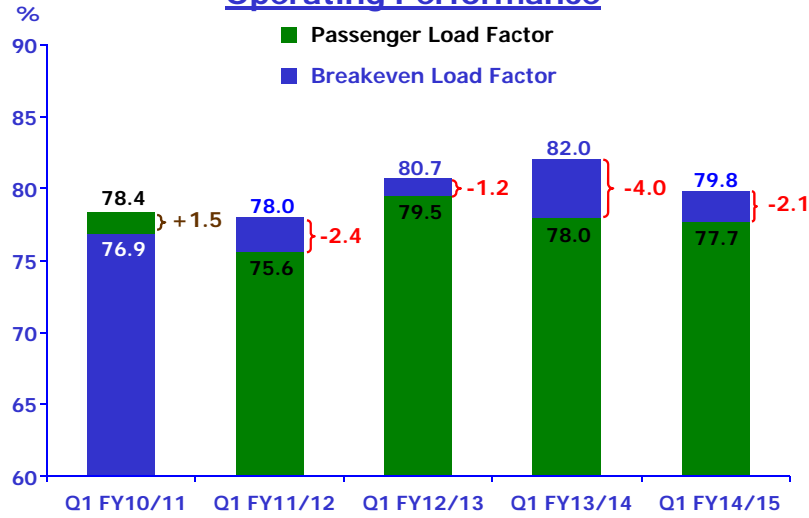
	<u>Q1</u> <u>FY14/15</u> <u>(\$M)</u>	<u>Q1</u> <u>FY13/14</u> <u>(\$M)</u>	<u>Better/ (Worse)</u> <u>(\$M)</u>	<u>Better/ (Worse)</u> <u>%</u>
Total Revenue	3,008.7	3,159.7	(151.0)	(4.8)
Total Expenditure	2,963.7	3,070.8	107.1	3.5
-- Fuel cost	1,177.5	1,170.6	(6.9)	(0.6)
-- Fuel hedging (gain)/Loss	(27.9)	35.3	63.2	n.m
-- Non-fuel expenditure	1,814.1	1,864.9	50.8	2.7
Operating Profit	45.0	88.9	(43.9)	(49.4)
Operating Profit Margin (%)	1.5	2.8	-	(1.3) pts

Slide 4

SINGAPORE AIRLINES 

PARENT AIRLINE COMPANY Q1 2014-15

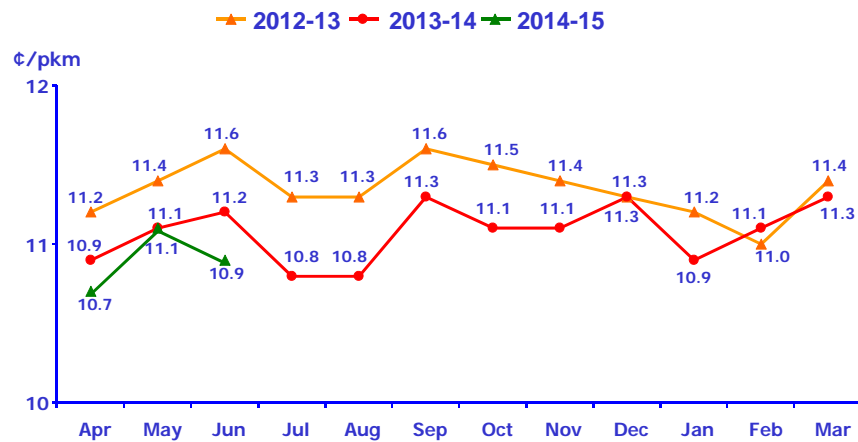
Operating Performance



Slide 5

PARENT AIRLINE COMPANY Q1 2014-15

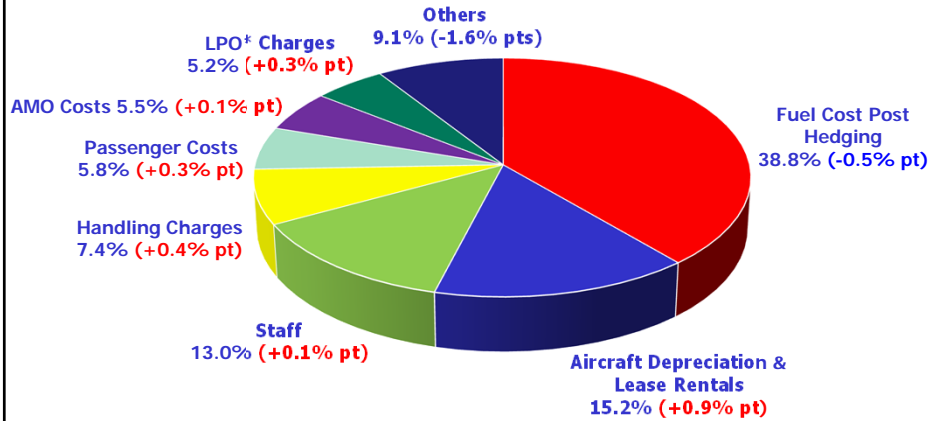
Monthly Pax Yields (Including Fuel Surcharge)



Slide 6

PARENT AIRLINE COMPANY Q1 2014-15

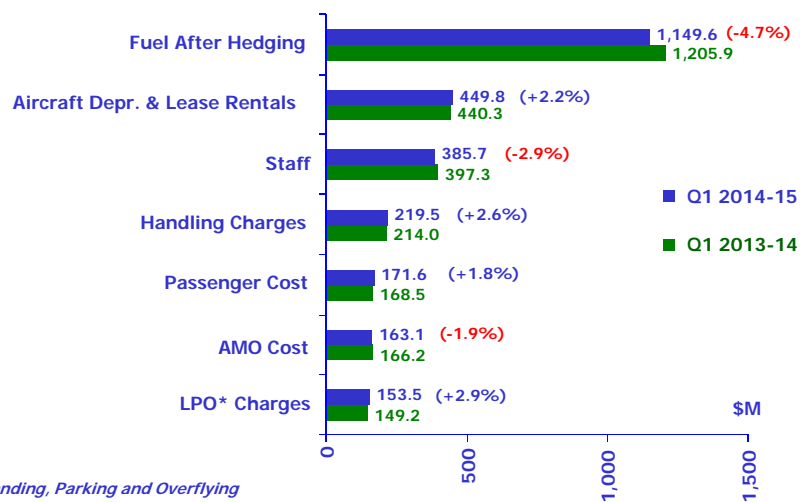
Cost Composition



*Landing, Parking and Overflying
Slide 7

PARENT AIRLINE COMPANY Q1 2014-15

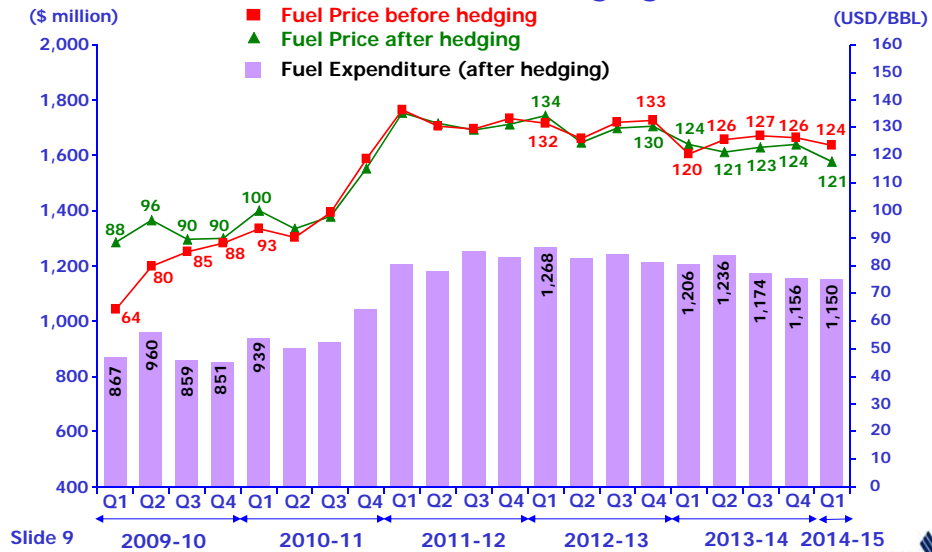
Expenditure Breakdown



*Landing, Parking and Overflying
Slide 8

PARENT AIRLINE COMPANY Q1 2014-15

Fuel Price After Hedging



Slide 9

PARENT AIRLINE COMPANY Q1 2014-15

Composition of Decrease in Fuel Cost (After Hedging)

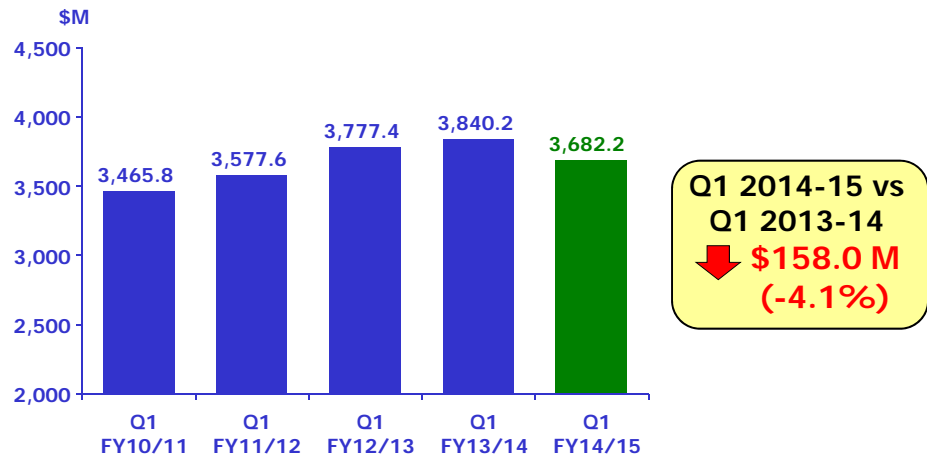


Slide 10

SIA GROUP Q1 FY2014-15

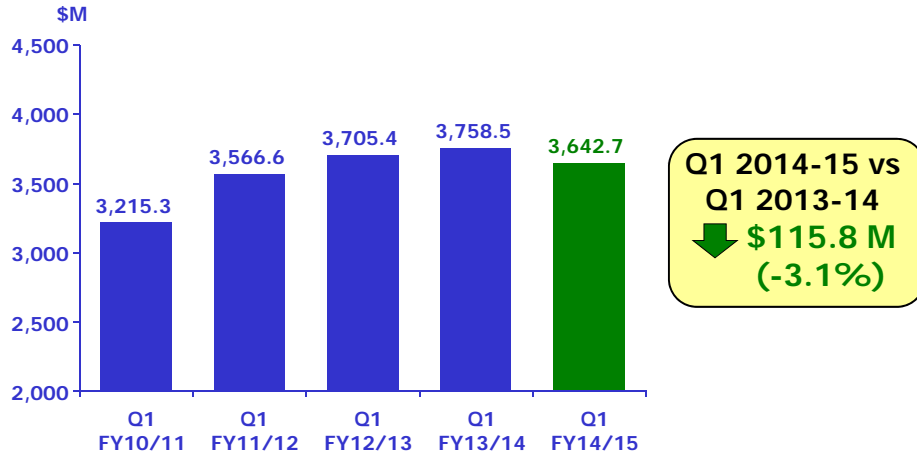
SIA GROUP Q1 2014-15

Group Revenue



SIA GROUP Q1 2014-15

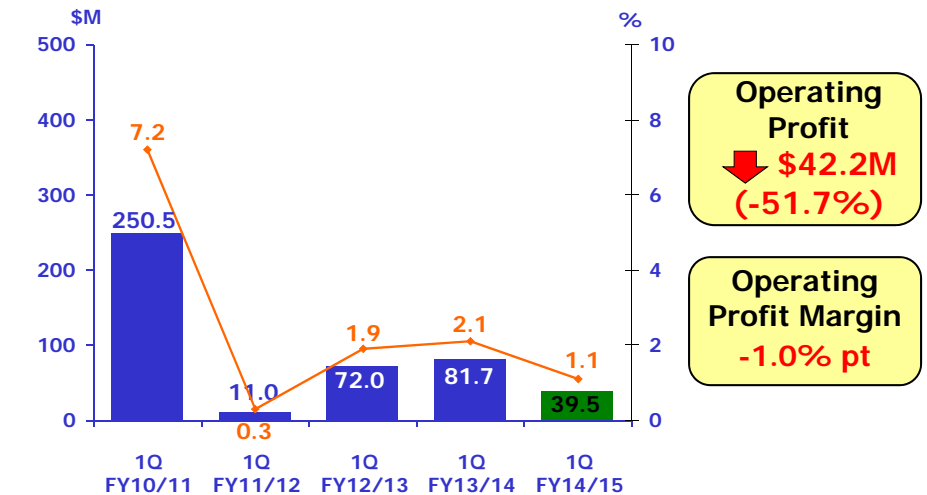
Group Expenditure



Slide 13

SIA GROUP Q1 2014-15

Group Operating Profit



Slide 14

SIA GROUP Q1 2014-15

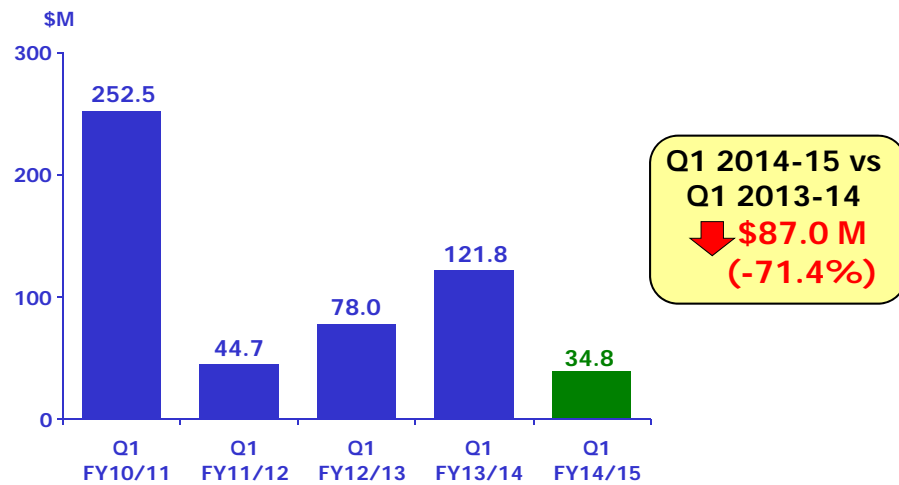
Group Operating Profit

	<u>Q1 FY14/15</u>	<u>Q1 FY13/14</u>	<u>Better/(Worse)</u>	<u>Better/(Worse)</u>
	<u>(\$ M)</u>	<u>(\$ M)</u>	<u>(\$ M)</u>	<u>(%)</u>
SIA	45.0	88.9	(43.9)	(49.4)
SIAEC	20.7	27.7	(7.0)	(25.3)
SilkAir	2.0	14.4	(12.4)	(86.1)
SIA Cargo	(18.2)	(40.4)	22.2	55.0

Slide 15

SIA GROUP Q1 2014-15

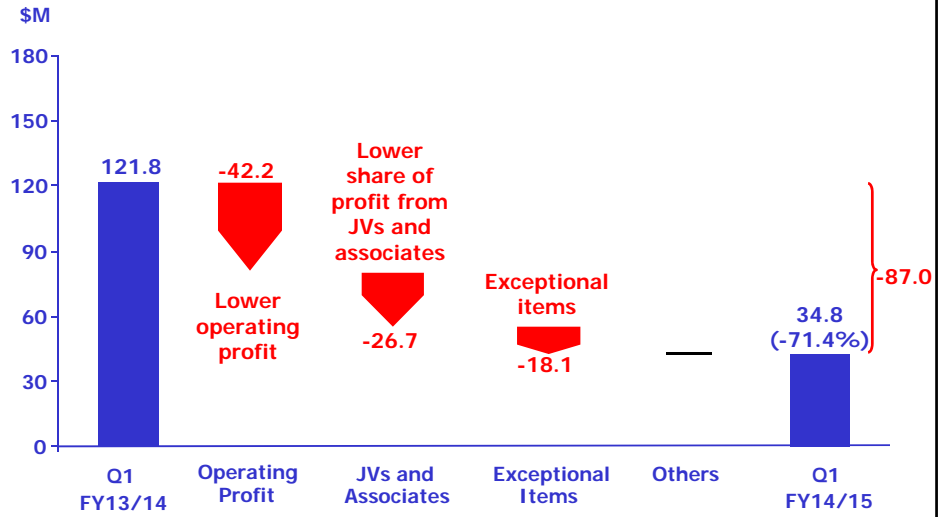
Group Net Profit



Slide 16

SIA GROUP Q1 2014-15

Group Profit Attributable to Owners of the Parent



Slide 17

Thank You