



SINGAPORE AIRLINES GROUP
3rd Quarter FY2009-10 Results
2 February 2010

197200078R

SINGAPORE AIRLINES 

PARENT AIRLINE COMPANY
Q3 FY2009-10
RESULTS

197200078R

PARENT AIRLINE COMPANY

Q3 2009-10

SINGAPORE AIRLINES



	<u>Q3</u> <u>2009-10</u>	<u>Q3</u> <u>2008-09</u>	<u>Better/</u> <u>(Worse)</u> <u>%</u>
Total Revenue (\$ M)	2,787.0	3,413.1	(18.3)
Total Expenditure (\$ M)	2,556.0	3,098.9	17.5
-- Fuel cost	815.0	1,093.9	25.5
-- Fuel hedging loss	43.8	283.1	84.5
-- Non-fuel expenditure	1,697.2	1,721.9	1.4
Operating Profit (\$ M)	231.0	314.2	(26.5)
Operating Profit Margin (%)	8.3	9.2	(0.9) pt

Slide 1

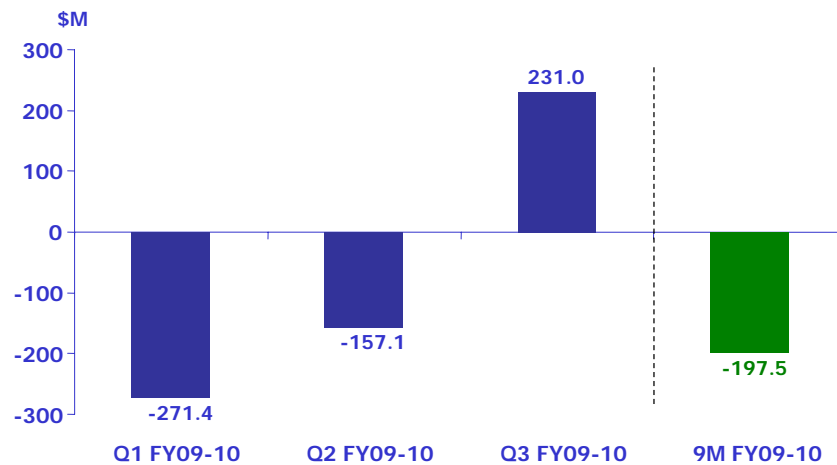
PARENT AIRLINE COMPANY

Q3 2009-10

SINGAPORE AIRLINES



Company Operating (Loss)/Profit



Slide 2

PARENT AIRLINE COMPANY Q3 2009-10

SINGAPORE AIRLINES



	<u>Q3</u> <u>2009-10</u>	<u>Q3</u> <u>2008-09</u>	<u>Change</u> <u>%</u>
Available Seat-KM (M)	26,814.0	29,671.3	(9.6)
Revenue Passenger-KM (M)	22,108.1	23,296.7	(5.1)
Passenger Load Factor (%)	82.4	78.5	3.9 pts

Slide 3

PARENT AIRLINE COMPANY Q3 2009-10

SINGAPORE AIRLINES



	<u>Q3</u> <u>2009-10</u>	<u>Q3</u> <u>2008-09</u>	<u>Change</u> <u>%</u>
Pax Yield - include fuel surcharge (¢/pkm)	10.5	12.8	(18.0)
Passenger Unit Cost (¢/ask)	8.3	9.3	(10.8)
Passenger Breakeven Load Factor (%)	79.0	72.7	6.3 pts
Passenger Load Factor Spread (%)	3.4	5.8	(2.4) pts

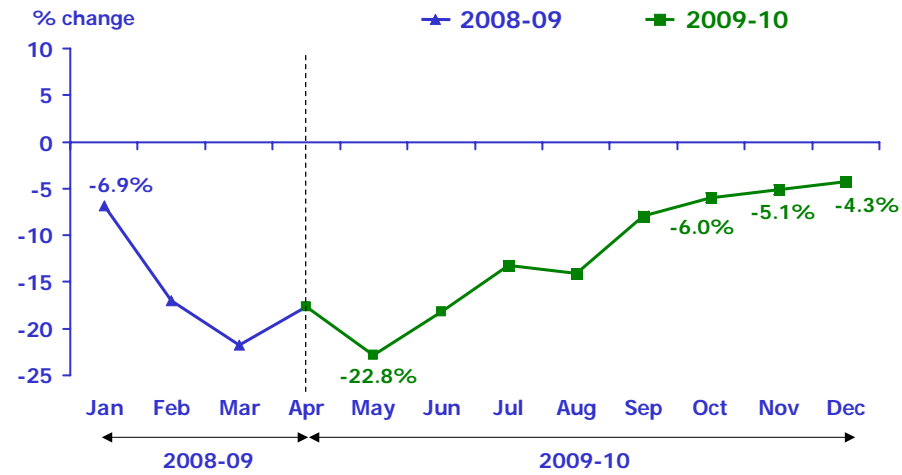
Slide 4

PARENT AIRLINE COMPANY

Q3 2009-10



Revenue Passenger-KM (% change year-on-year)



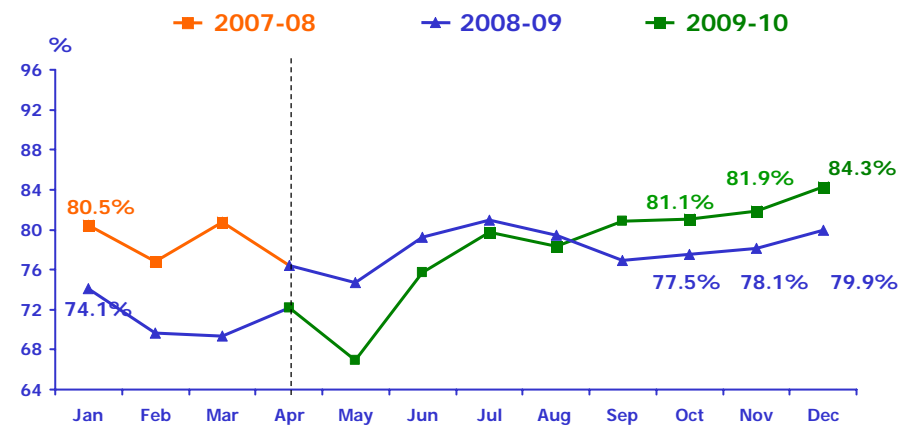
Slide 5

PARENT AIRLINE COMPANY

Q3 2009-10



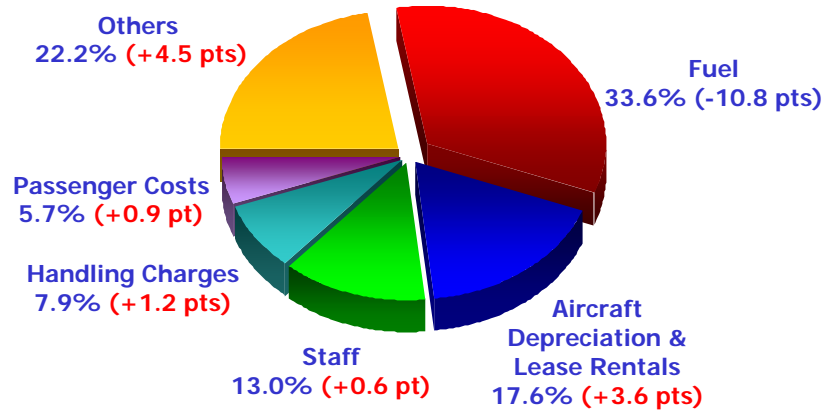
Monthly Passenger Load Factor



Slide 6

PARENT AIRLINE COMPANY Q3 2009-10

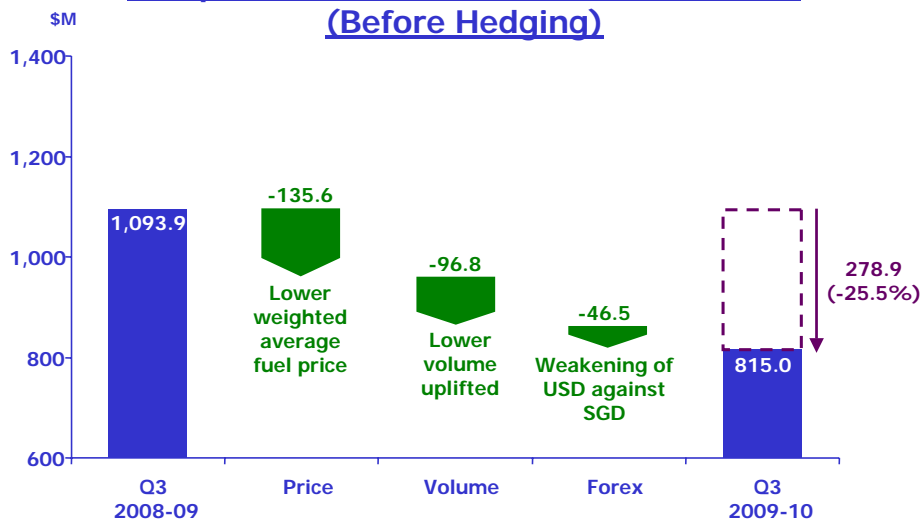
Cost Composition



Slide 7

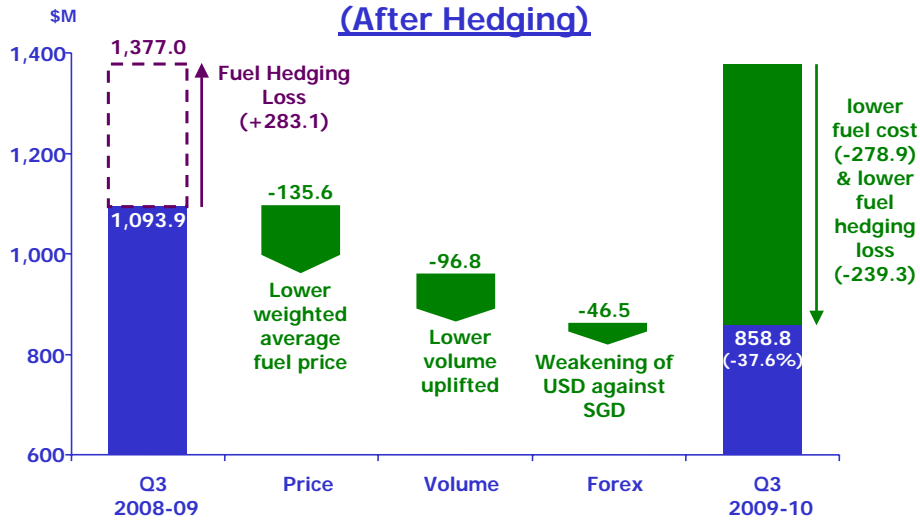
PARENT AIRLINE COMPANY Q3 2009-10

Composition of Fuel Decrease in Fuel Cost (Before Hedging)



Slide 8

**Composition of Fuel Decrease in Fuel Cost
(After Hedging)**

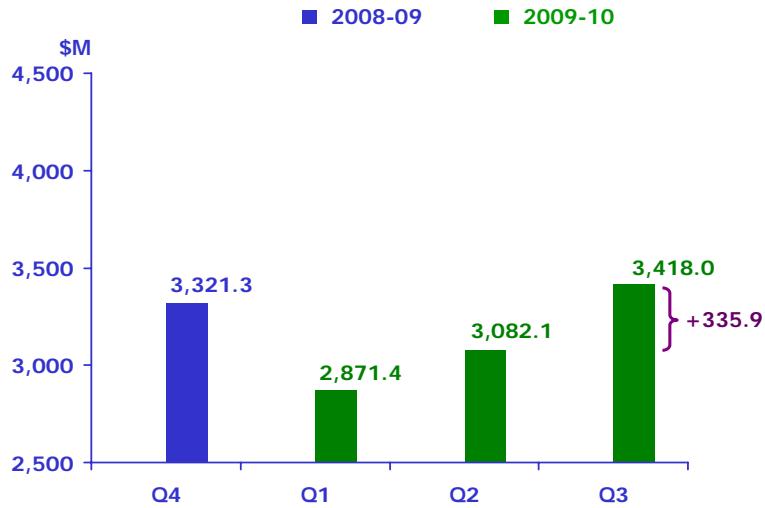


Slide 9

THE GROUP
Q3 FY2009-10
RESULTS

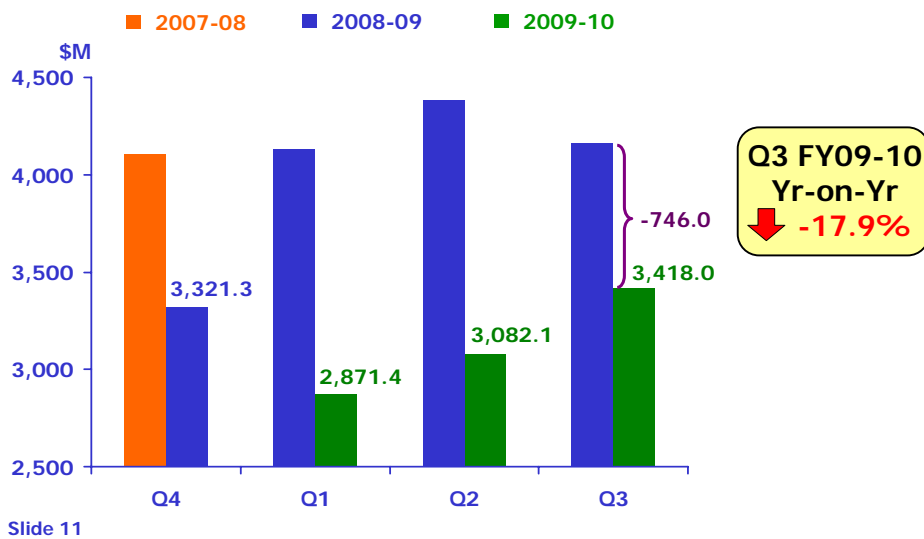
SIA GROUP Q3 2009-10

Group Revenue



SIA GROUP Q3 2009-10

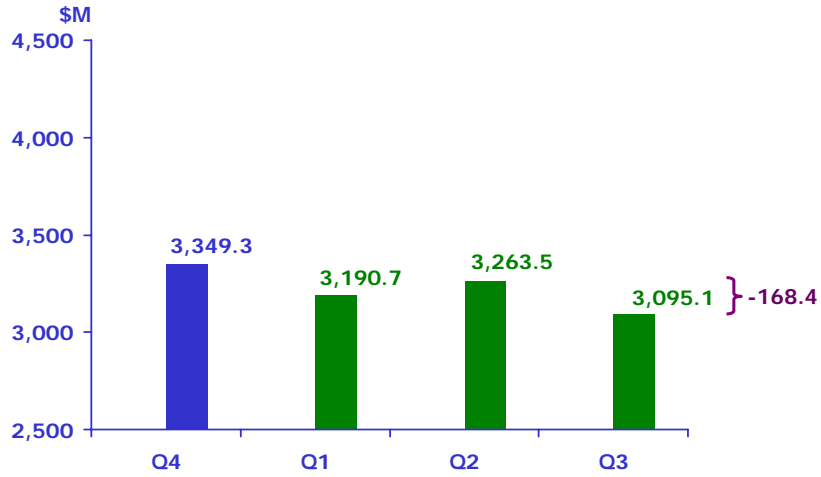
Group Revenue



SIA GROUP Q3 2009-10

Group Expenditure

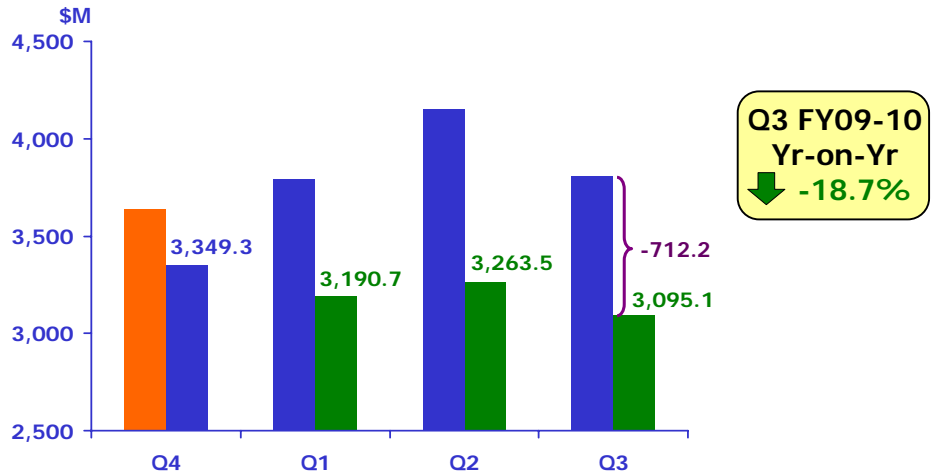
■ 2008-09 ■ 2009-10



SIA GROUP Q3 2009-10

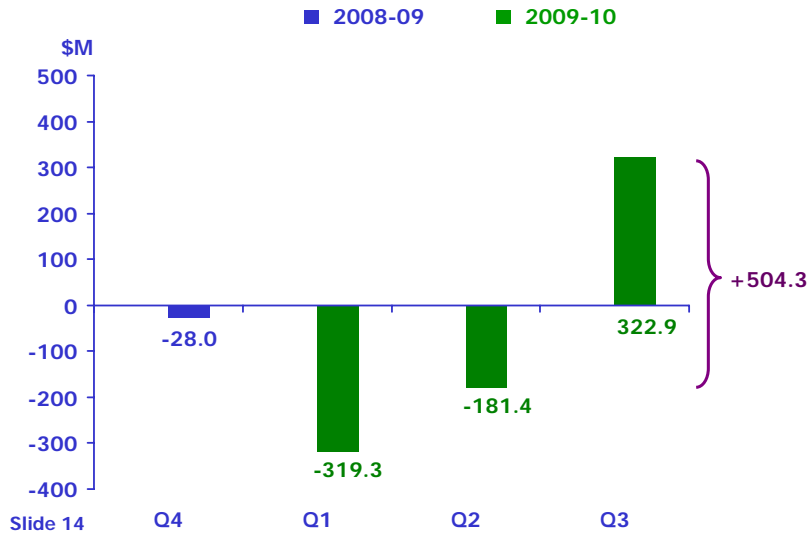
Group Expenditure

■ 2007-08 ■ 2008-09 ■ 2009-10



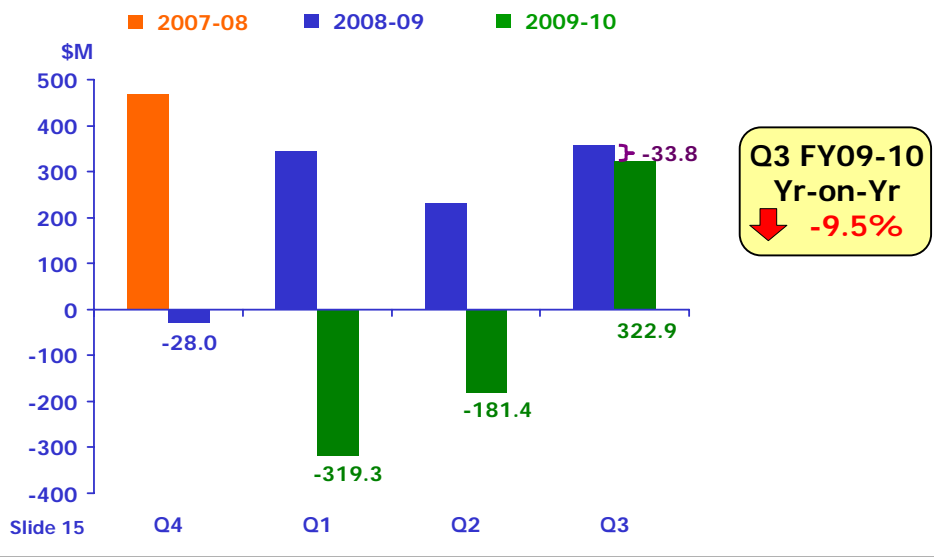
SIA GROUP Q3 2009-10

Group Operating Profit/(Loss)



SIA GROUP Q3 2009-10

Group Operating Profit/(Loss)



SIA GROUP Q3 2009-10

SINGAPORE AIRLINES



Group Operating Profit/(Loss)

	<u>Q3 2009-10</u>	<u>Q3 2008-09</u>	<u>Better/ (Worse)</u>
	<u>(\$ M)</u>	<u>(\$ M)</u>	<u>(\$ M)</u>
SIA	231.0	314.2	(83.2)
SATS*	-	43.4	(43.4)
SIAEC	21.8	29.4	(7.6)
SIA Cargo	40.1	(46.2)	86.3
SilkAir	23.0	12.0	11.0
Others	7.0	3.9	3.1
Group Total	322.9	356.7	(33.8)

* SATS was divested from the Group with effect from 1 Sep 2009, after completion of the dividend *in specie* distribution.

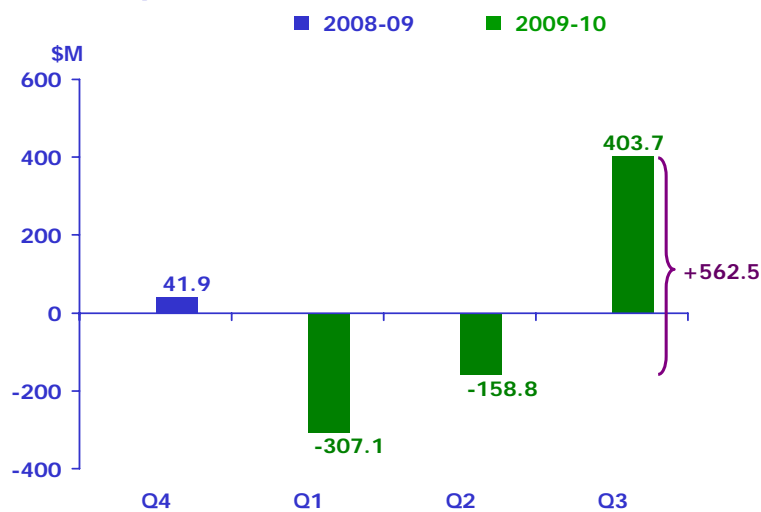
Slide 16

SIA GROUP Q3 2009-10

SINGAPORE AIRLINES

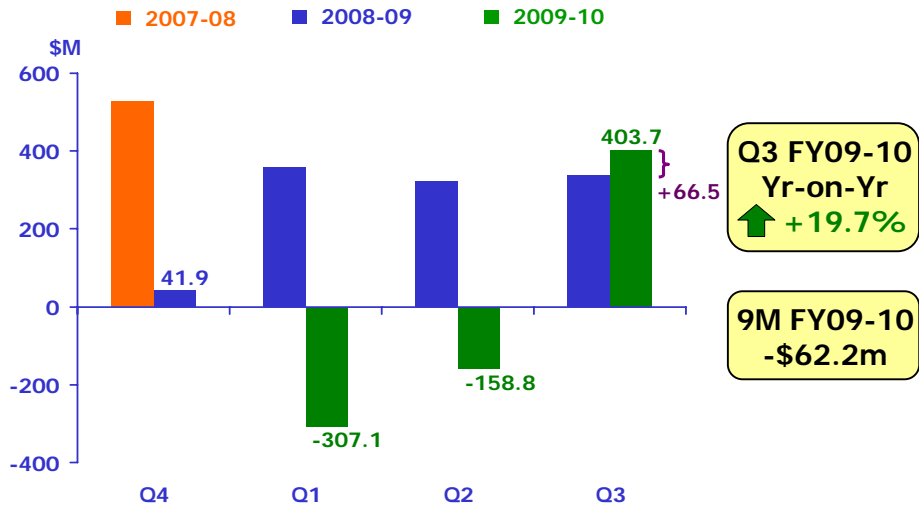


Group Profit/(Loss) Attributable to Shareholders



Slide 17

Group Profit/(Loss) Attributable to Shareholders



Slide 18

Thank You