



SIA BUSINESS MEETING
Q2 and 1H FY17/18 Results
7 November 2017

THE PARENT AIRLINE Q2 AND 1H FY17/18 RESULTS

THE PARENT AIRLINE COMPANY

OPERATING PERFORMANCE

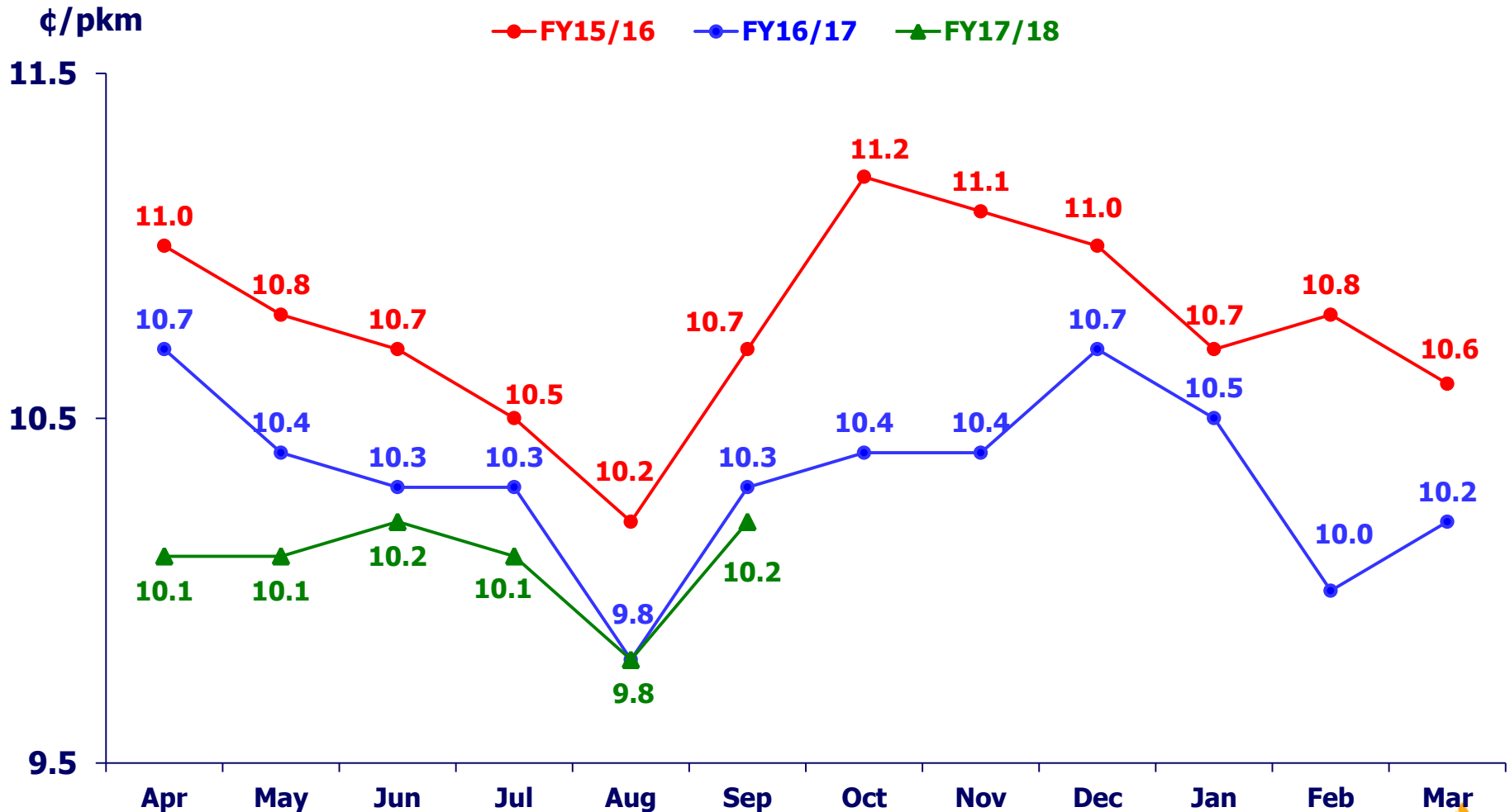
	Q2	%	1H	%
	FY17/18	Change	FY17/18	Change
Available Seat-KM (million)	30,047	+0.5	59,010	-0.1
Revenue Pax-KM (million)	24,579	+2.3	47,755	+3.4
Passenger Load Factor (%)	81.8	+1.4 pts	80.9	+2.8 pts

THE PARENT AIRLINE COMPANY OPERATING PERFORMANCE

	Q2	%	1H	%
	FY17/18	Change	FY17/18	Change
Passenger Yield (¢/pkm)	10.0	-2.0	10.1	-1.9

THE PARENT AIRLINE COMPANY OPERATING PERFORMANCE

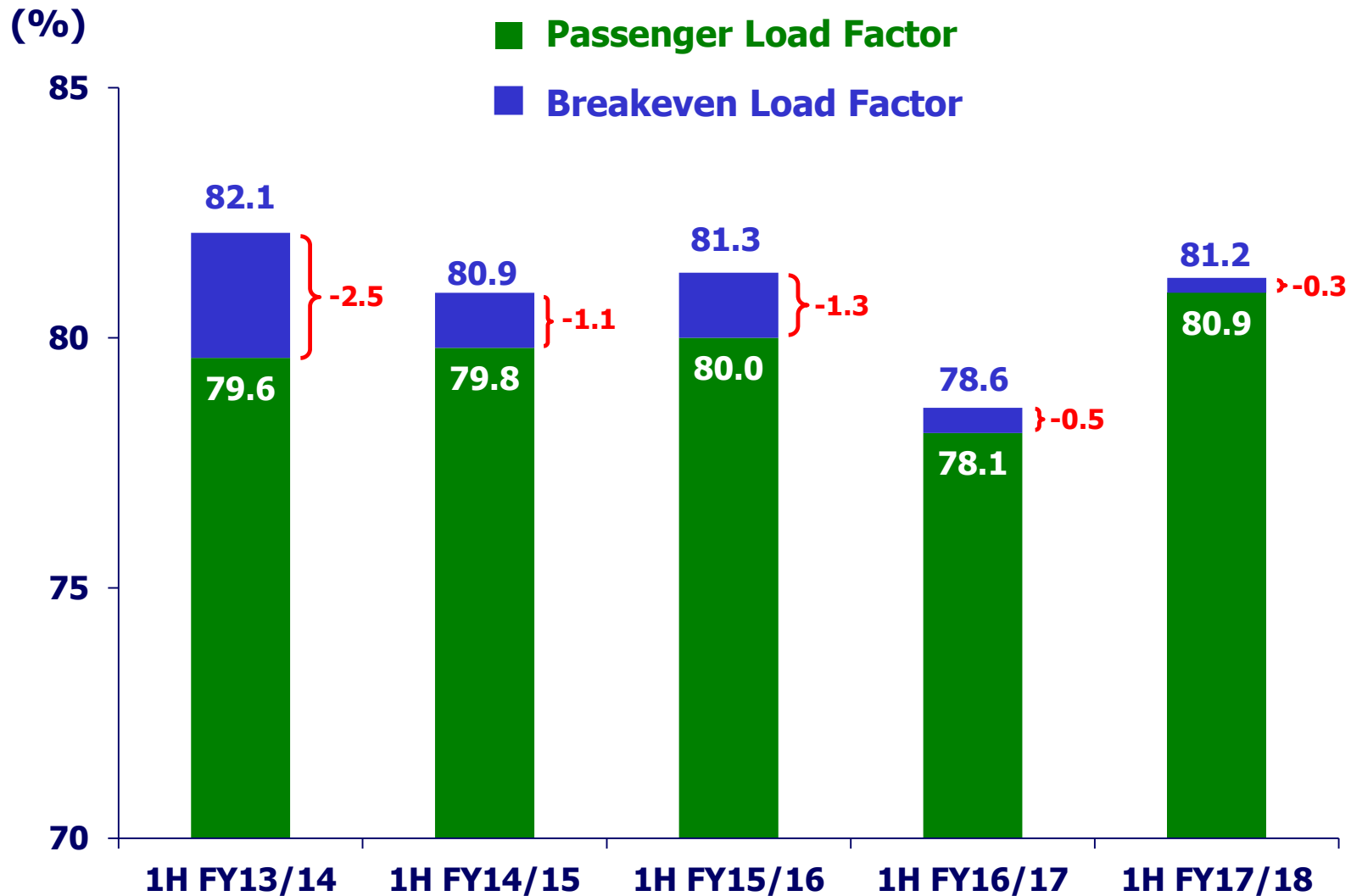
Monthly Pax Yields



THE PARENT AIRLINE COMPANY OPERATING PERFORMANCE

	Q2 FY17/18	% Change	1H FY17/18	% Change
Passenger Yield (¢/pkm)	10.0	-2.0	10.1	-1.9
Revenue per ASK (¢/ask)	8.2	-	8.2	+1.2
Passenger Unit Cost (¢/ask)	8.2	-	8.2	+1.2
Passenger Unit Ex- Fuel Cost (¢/ask)	5.8	-	5.8	+1.8
Passenger Breakeven Load Factor (%)	82.0	+1.6 pts	81.2	+2.6 pts

THE PARENT AIRLINE COMPANY OPERATING PERFORMANCE

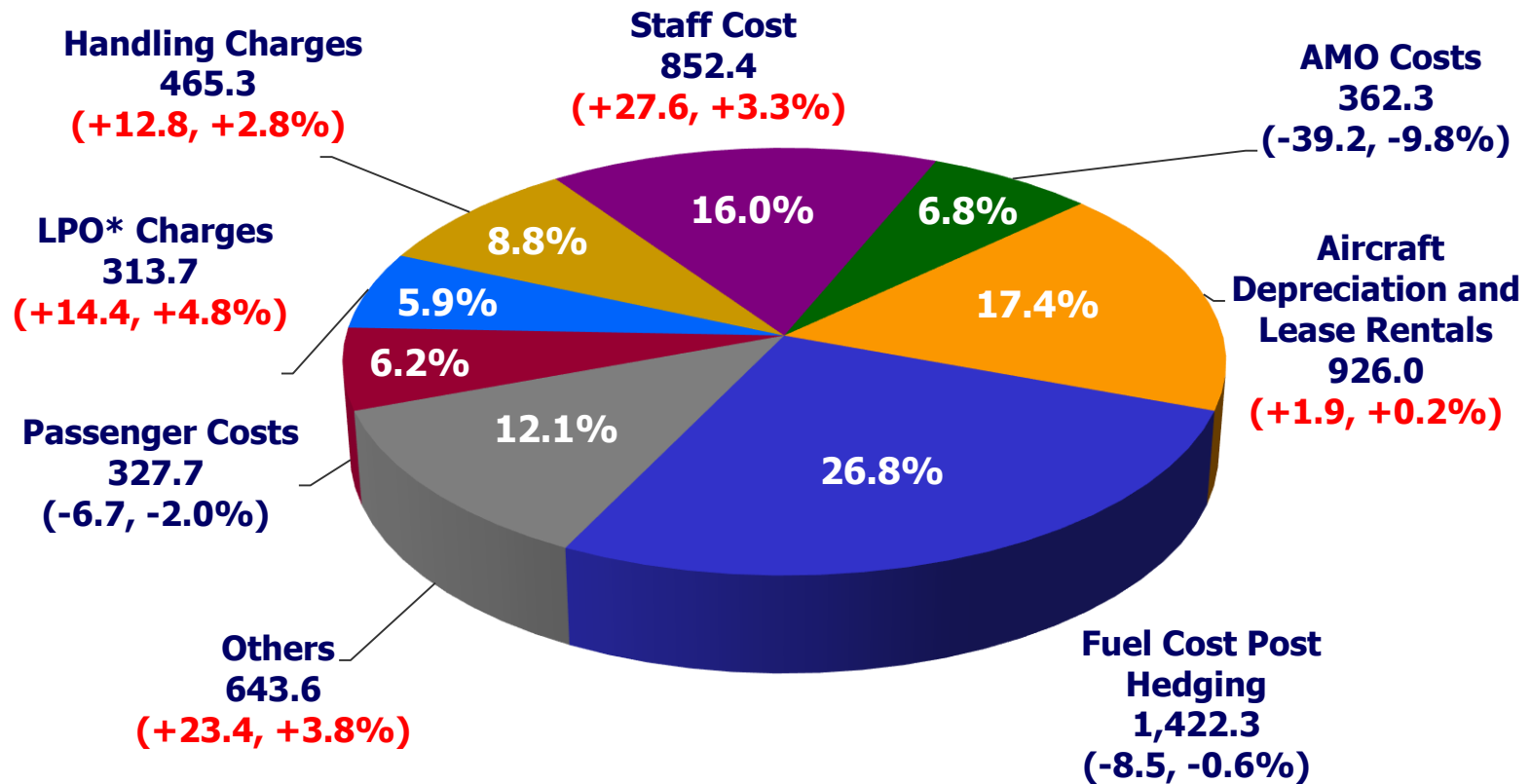


THE PARENT AIRLINE COMPANY RESULTS

	Q2 FY17/18 \$million	Better/ (Worse) \$million	1H FY17/18 \$million	Better/ (Worse) \$million
Total Revenue	2,856	90	5,724	161
Total Expenditure	2,686	1	5,313	(26)
- <i>Net Fuel Cost</i>	716	17	1,422	9
<i>Fuel Cost</i>	713	(95)	1,398	(194)
<i>Fuel Hedging Loss</i>	3	112	24	202
- <i>Ex-fuel Cost</i>	1,970	(16)	3,891	(35)
Operating Profit	170	91	411	135
Operating Profit Margin (%)	5.9	3.0 pts	7.2	2.2 pts

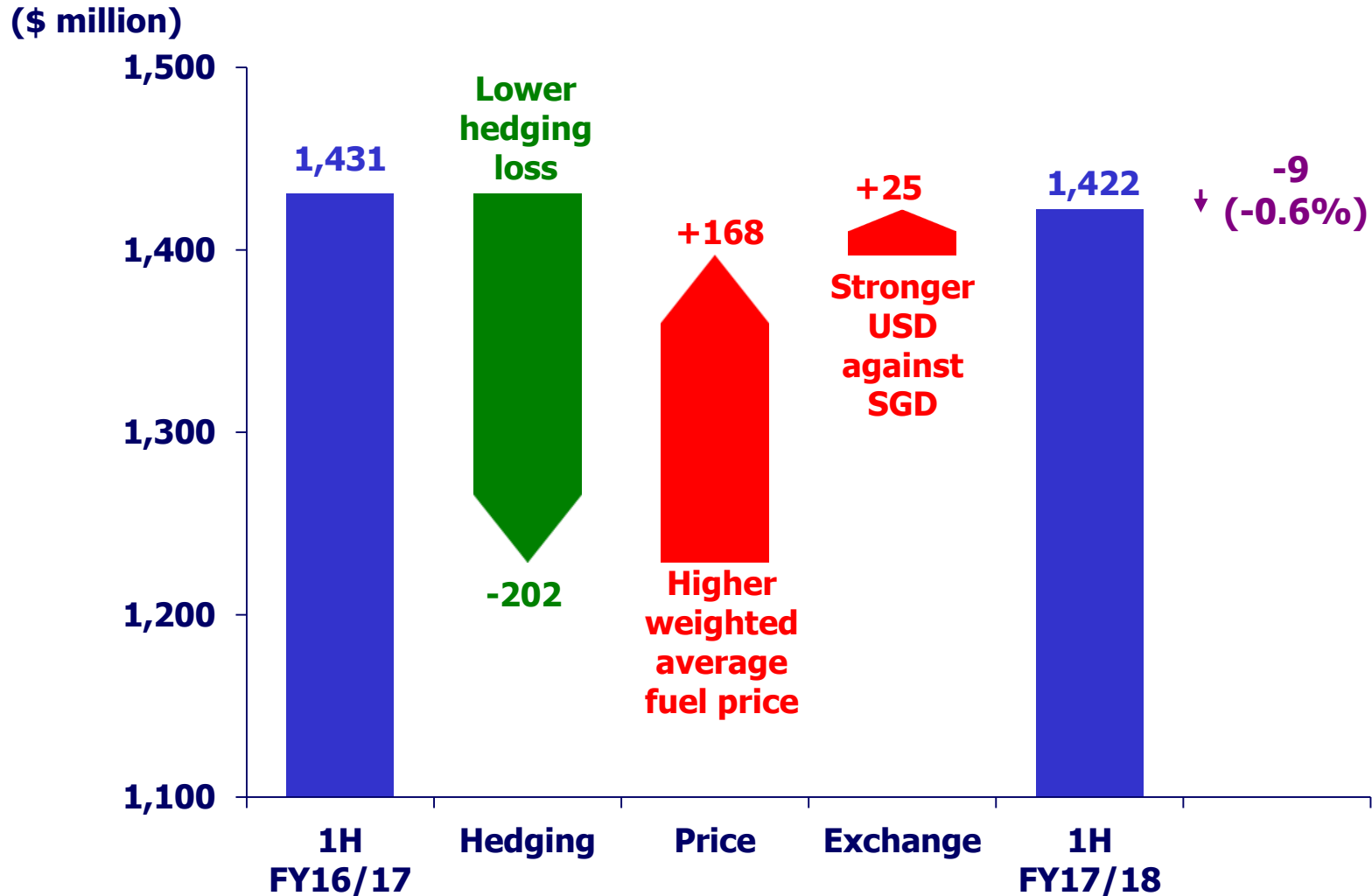
THE PARENT AIRLINE COMPANY COST COMPOSITION

1H FY17/18 (\$'M)



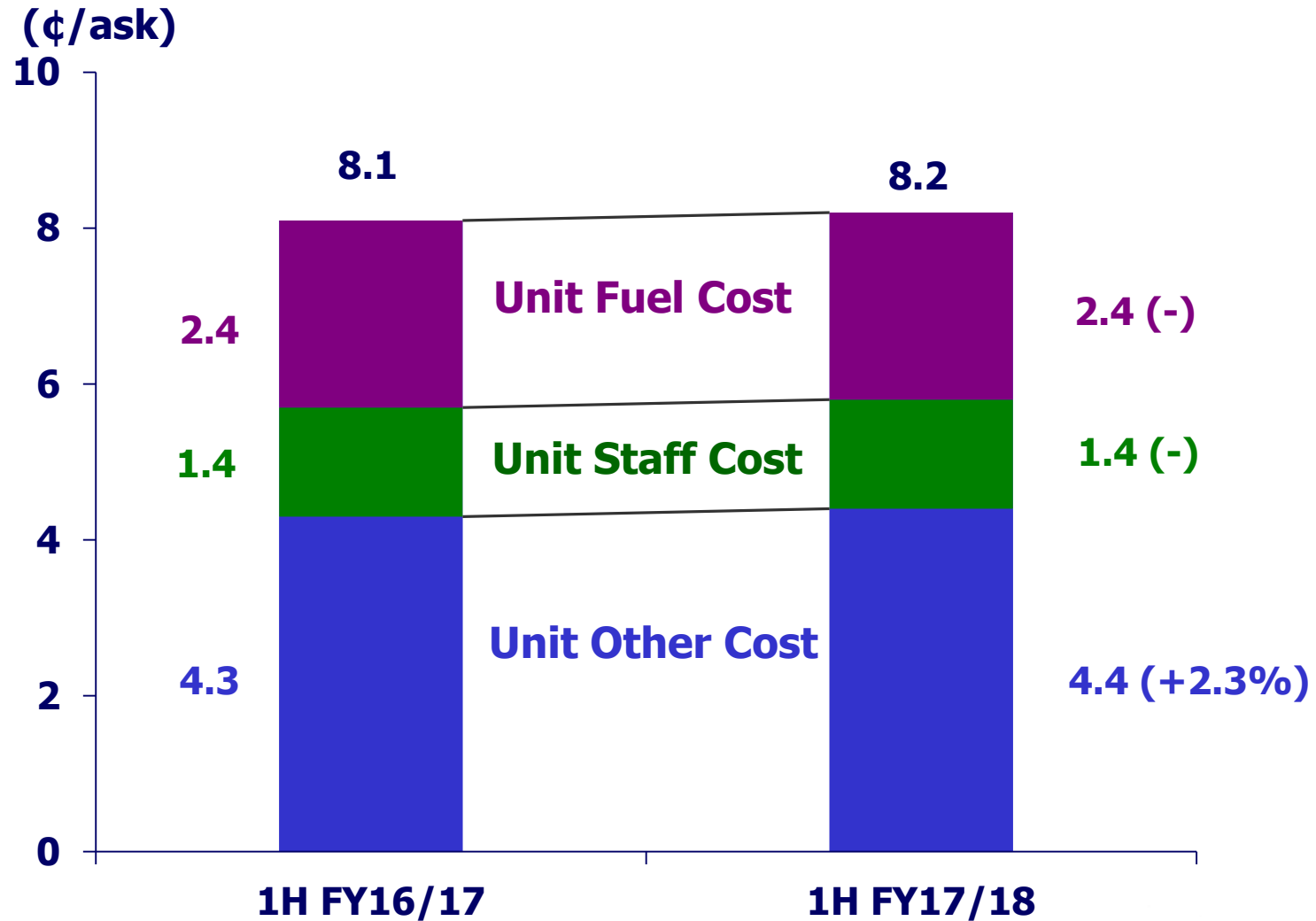
**Landing, Parking and Overflying*

THE PARENT AIRLINE COMPANY FUEL EXPENDITURE



THE PARENT AIRLINE COMPANY

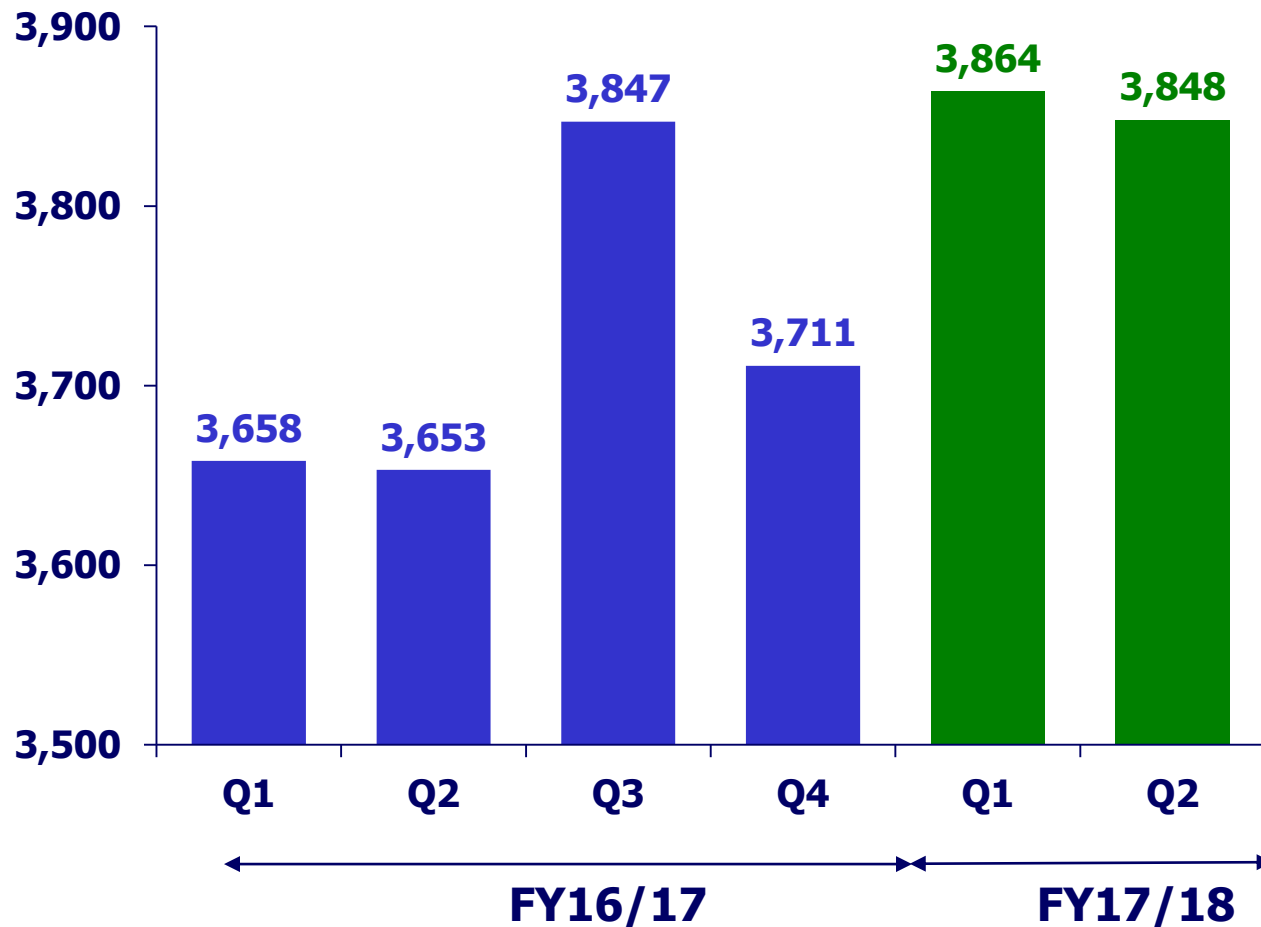
UNIT COST ANALYSIS



SIA GROUP Q2 AND 1H FY17/18 RESULTS

GROUP REVENUE

(\$ million)

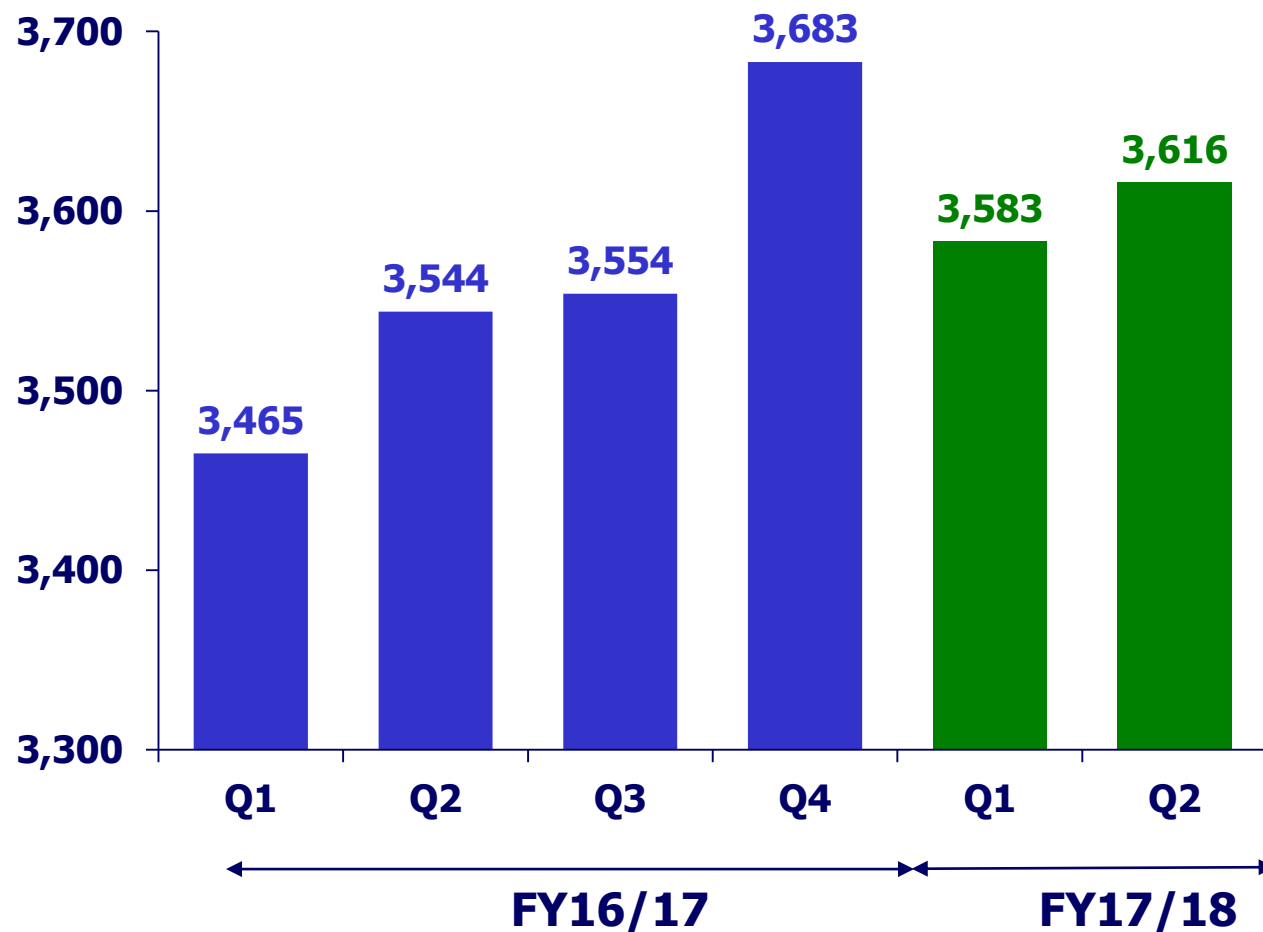


**1H 17/18
Revenue
\$7,712M**

**Year-on-Year
↑ \$401M
+5.5%**

GROUP EXPENDITURE

(\$ million)

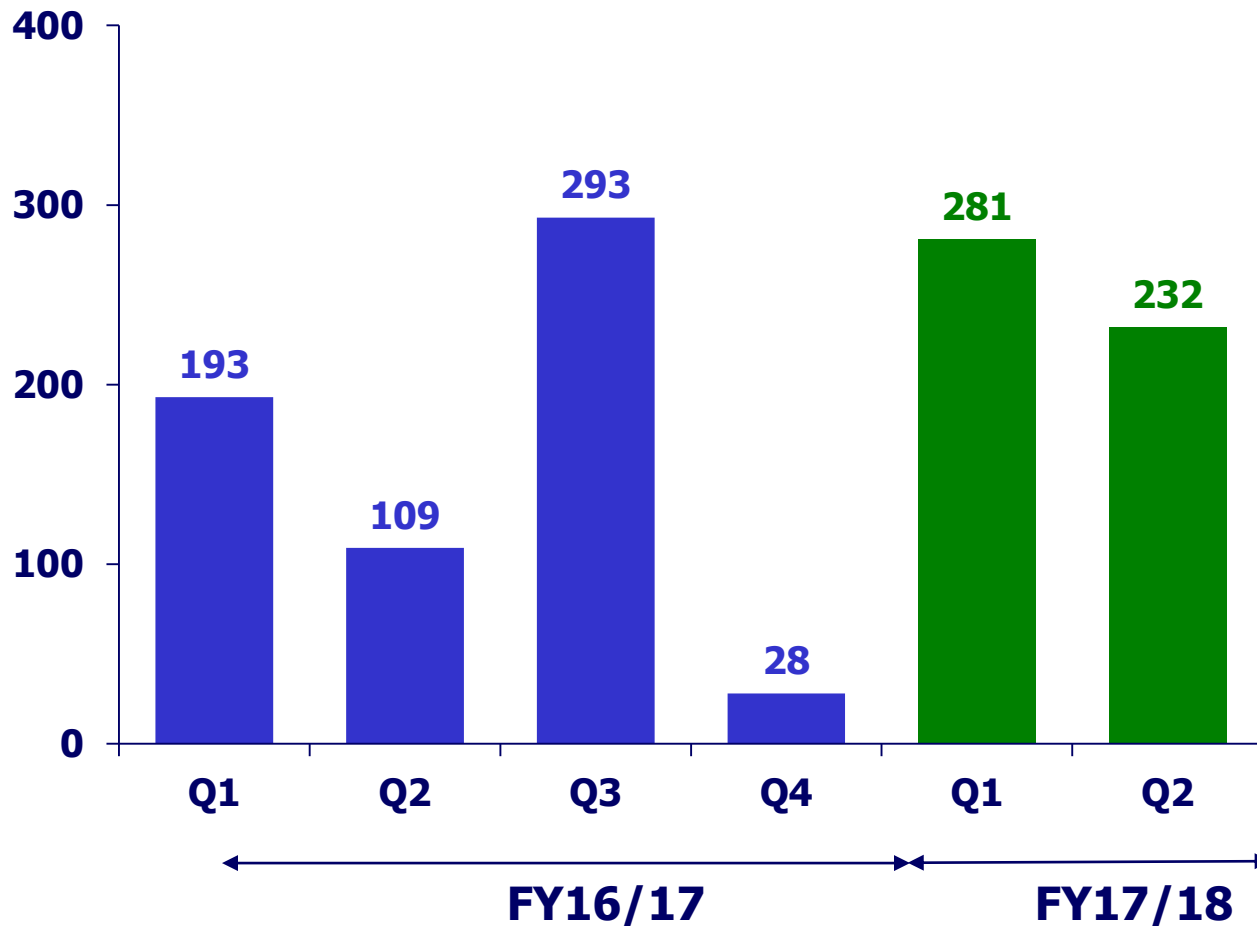


**1H 17/18
Expenditure
\$7,199M**

Year-on-Year
↑ **\$190M**
+2.7%

GROUP OPERATING PROFIT

(\$ million)



**1H 17/18
Op Profit
\$513M**

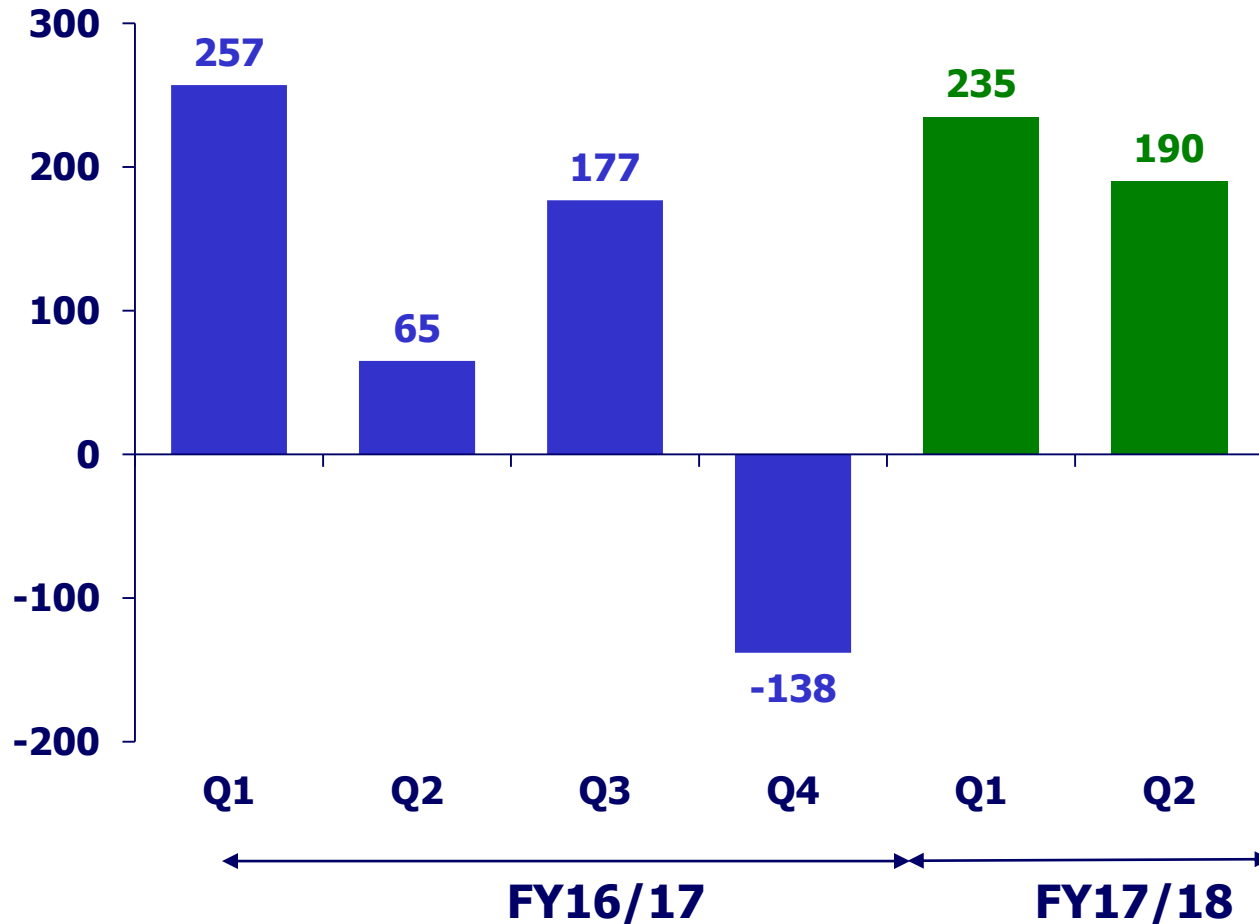
**Year-on-Year
↑ \$211M
+69.9%**

CONTRIBUTION TO GROUP OPERATING PROFIT

<u>(\$ million)</u>	<u>1H</u> <u>FY17/18</u>	<u>1H</u> <u>FY16/17</u>	<u>Change</u>	<u>% Change</u>
Singapore Airlines	411	276	135	48.9
SilkAir	21	44	(23)	- 52.3
Scoot	5	17	(12)	- 70.6
SIA Cargo	32	(45)	77	n.m.
SIAEC	38	23	15	65.2

GROUP PROFIT ATTRIBUTABLE TO OWNERS OF PARENT

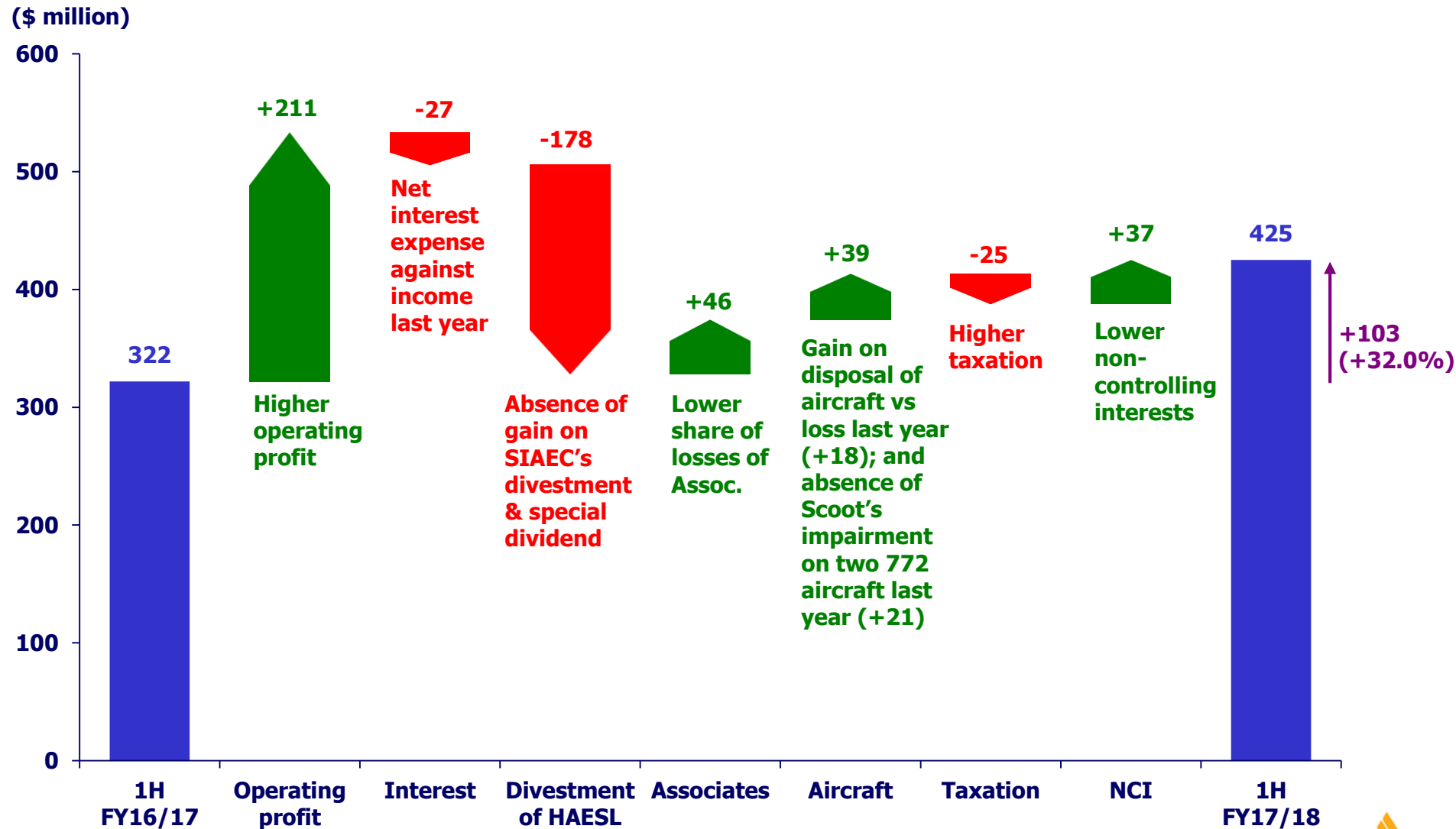
(\$ million)



**1H 17/18
Net Profit
\$425M**

**Year-on-Year
↑ \$103M
+32.0%**

GROUP PROFIT ATTRIBUTABLE TO OWNERS OF PARENT



PER SHARE DATA

	<u>1H FY17/18</u>	<u>1H FY16/17</u>
EBITDAR Per Share (\$)	1.53	1.43
Earnings Per Share (¢)	36.0	27.2
Interim Dividend Per Share (¢)	10.0	9.0
	<u>At 30 Sep'17</u>	<u>At 31 Mar'17</u>
Net Asset Value Per Share (\$)	11.39	11.07



THANK YOU