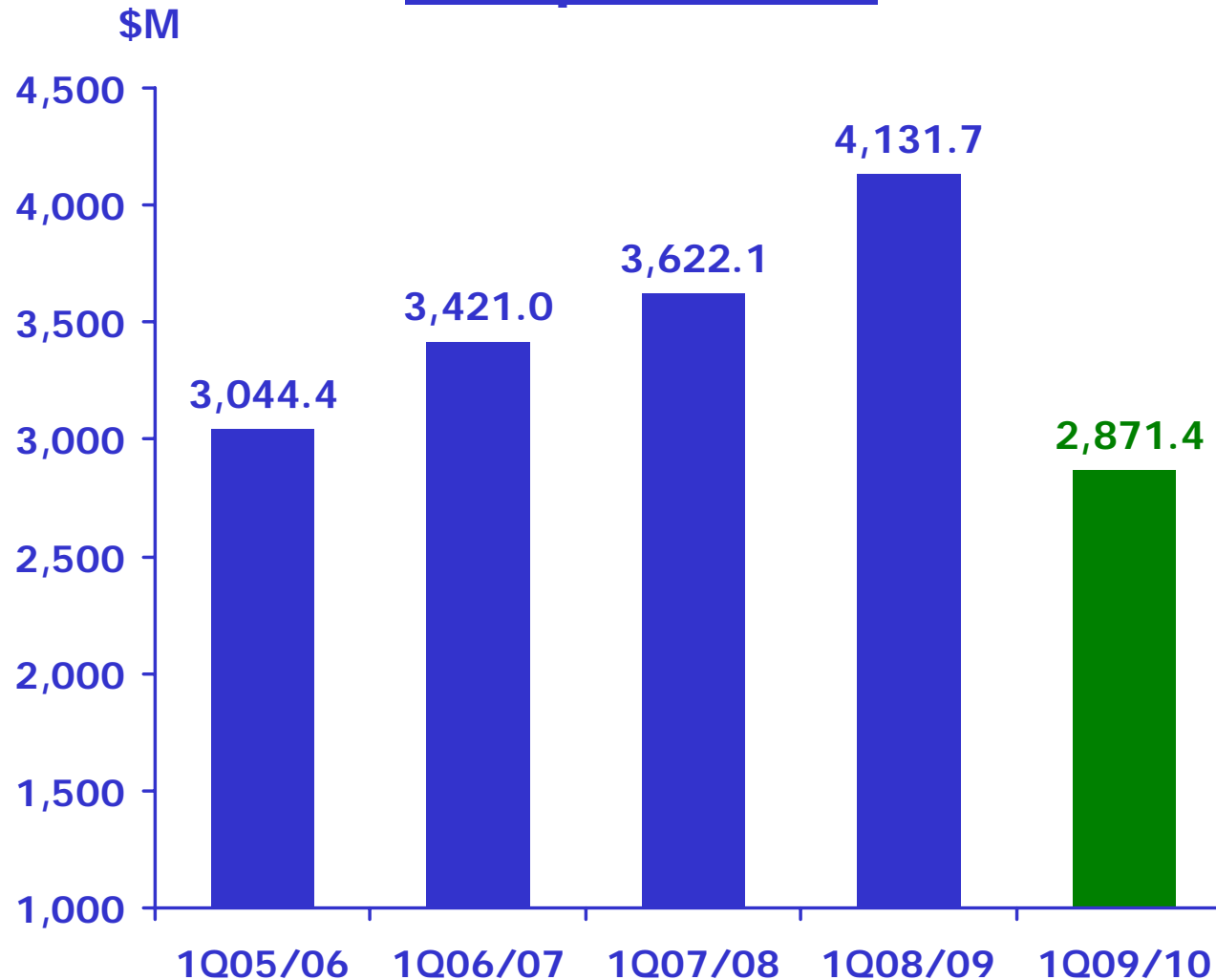


SIA GROUP STAFF COMMUNICATION

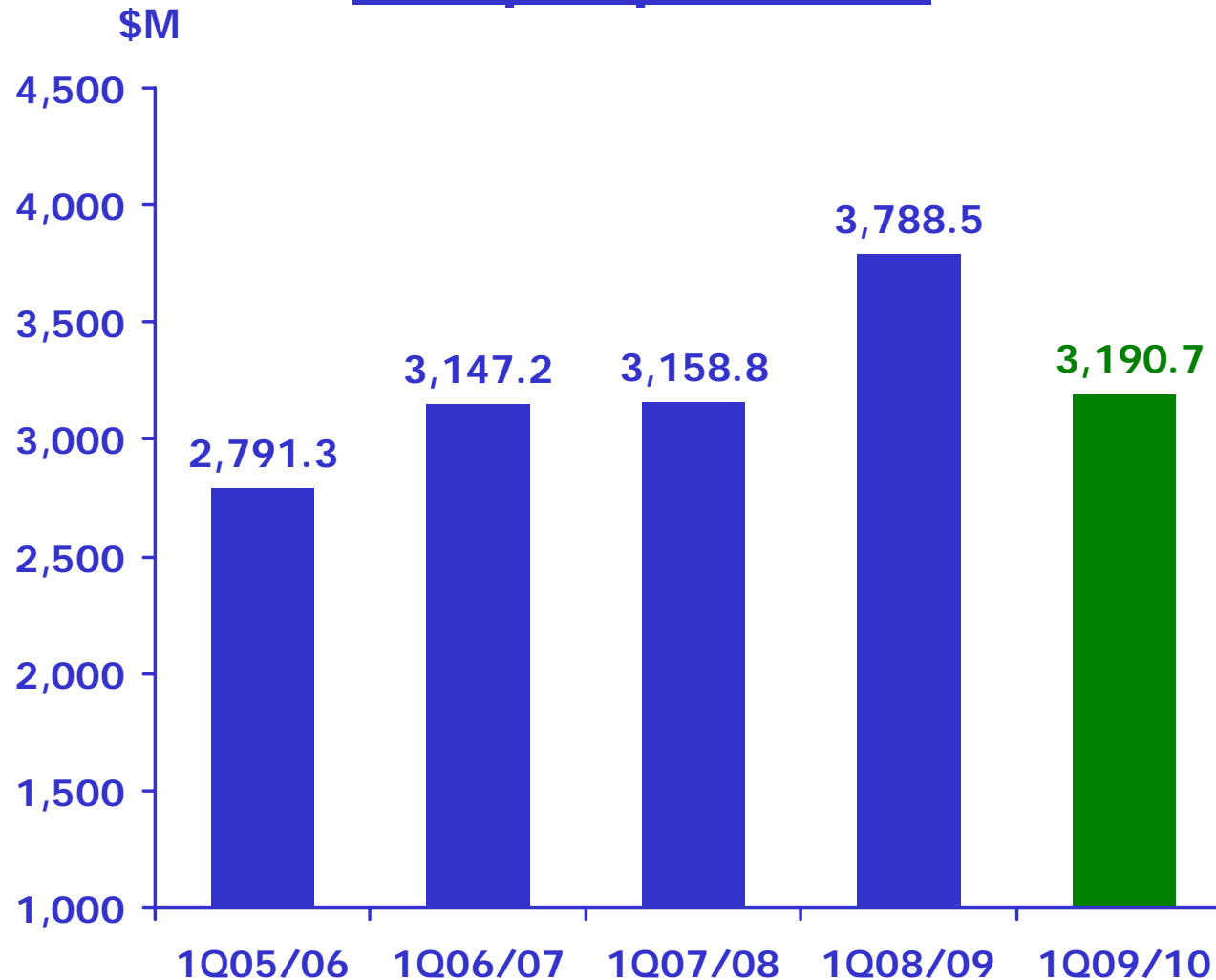
**For Q1 FY2009-10
Ended 30 June 2009**

Group Revenue



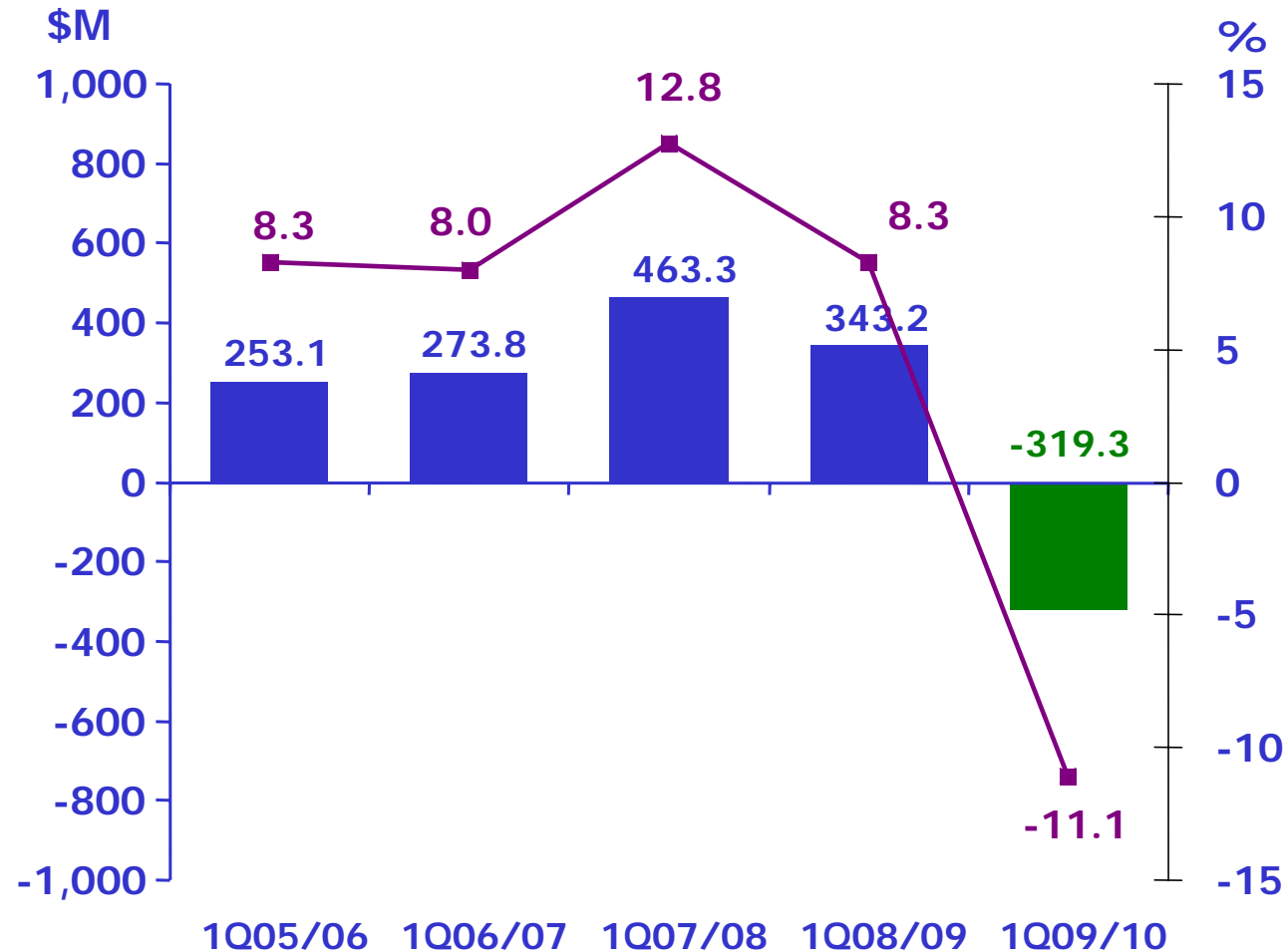
Q1 2009-10
 **30.5%**

Group Expenditure



Q1 2009-10
↓ 15.8%

Group Operating Profit/(Loss)



Operating Loss
 **\$662.5M**

Operating Loss Margin
-19.4% pts

Group Operating Profit/(Loss)

	<u>Q1 2009-10</u> <u>(\$ M)</u>	<u>Q1 2008-09</u> <u>(\$ M)</u>	<u>Better/ (Worse)</u> <u>(\$ M)</u>	<u>Better/ (Worse)</u> <u>(%)</u>
SIA	(271.4)	265.4	(536.8)	n.m.
SATS	43.7	38.2	5.5	14.4
SIAEC	12.3	16.4	(4.1)	(25.0)
SIA Cargo	(103.5)	4.5	(108.0)	n.m.
SilkAir	(3.4)	10.0	(13.4)	n.m.

PARENT AIRLINE COMPANY

Q1 2009-10

	<u>Q1</u> <u>2009-10</u>	<u>Q1</u> <u>2008-09</u>	<u>Better/</u> <u>(Worse)</u> <u>%</u>
Total Revenue (\$ M)	2,221.8	3,347.8	(33.6)
Total Expenditure (\$ M)	2,493.2	3,082.4	19.1
Operating (Loss)/Profit (\$ M)	(271.4)	265.4	n.m.
Operating (Loss)/Profit Margin (%)	(12.2)	7.9	(20.1) pts

PARENT AIRLINE COMPANY

Q1 2009-10

	<u>Q1</u> <u>2009-10</u>	<u>Q1</u> <u>2008-09</u>	<u>Change</u> <u>%</u>
Revenue Passenger-KM (M)	18,655.0	23,190.9	-19.6
Available Seat-KM (M)	26,072.6	30,225.4	-13.7
Passenger Load Factor (%)	71.6	76.7	- 5.1 pts

PARENT AIRLINE COMPANY

Q1 2009-10

	<u>Q1</u> <u>2009-10</u>	<u>Q1</u> <u>2008-09</u>	<u>Change</u> <u>%</u>
Pax Yield – include fuel surcharge (¢/pkm)	10.2	12.4	-17.7
Passenger Unit Cost (¢/pkm)	8.6	8.7	-1.1
Passenger Breakeven Load Factor (%)	84.3	70.2	+ 14.1 pts
Passenger Load Factor Spread (%)	-12.7	+6.5	- 19.2 pts

PARENT AIRLINE COMPANY

Q1 2009-10

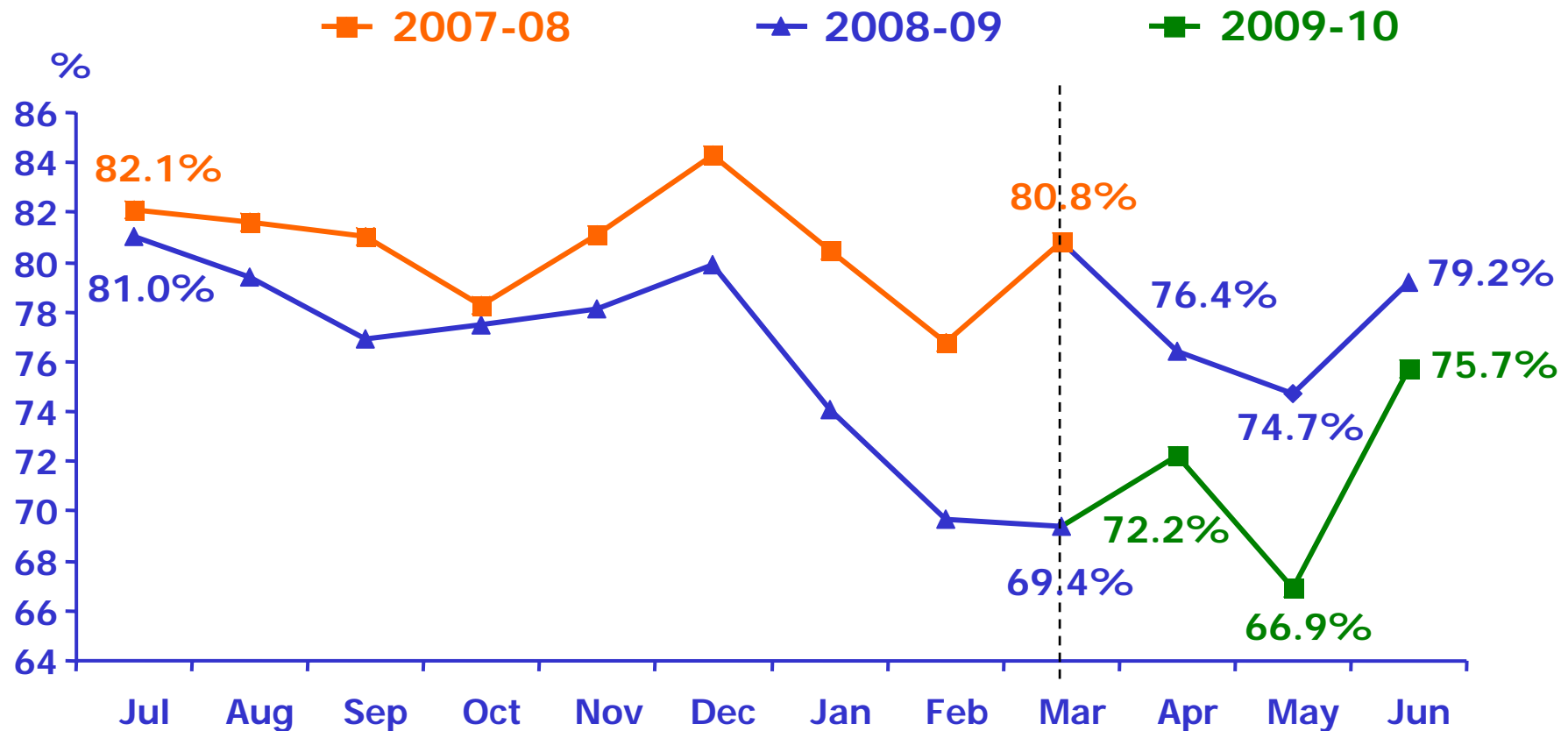
Revenue Passenger-KM (% change year-on-year)



PARENT AIRLINE COMPANY

Q1 2009-10

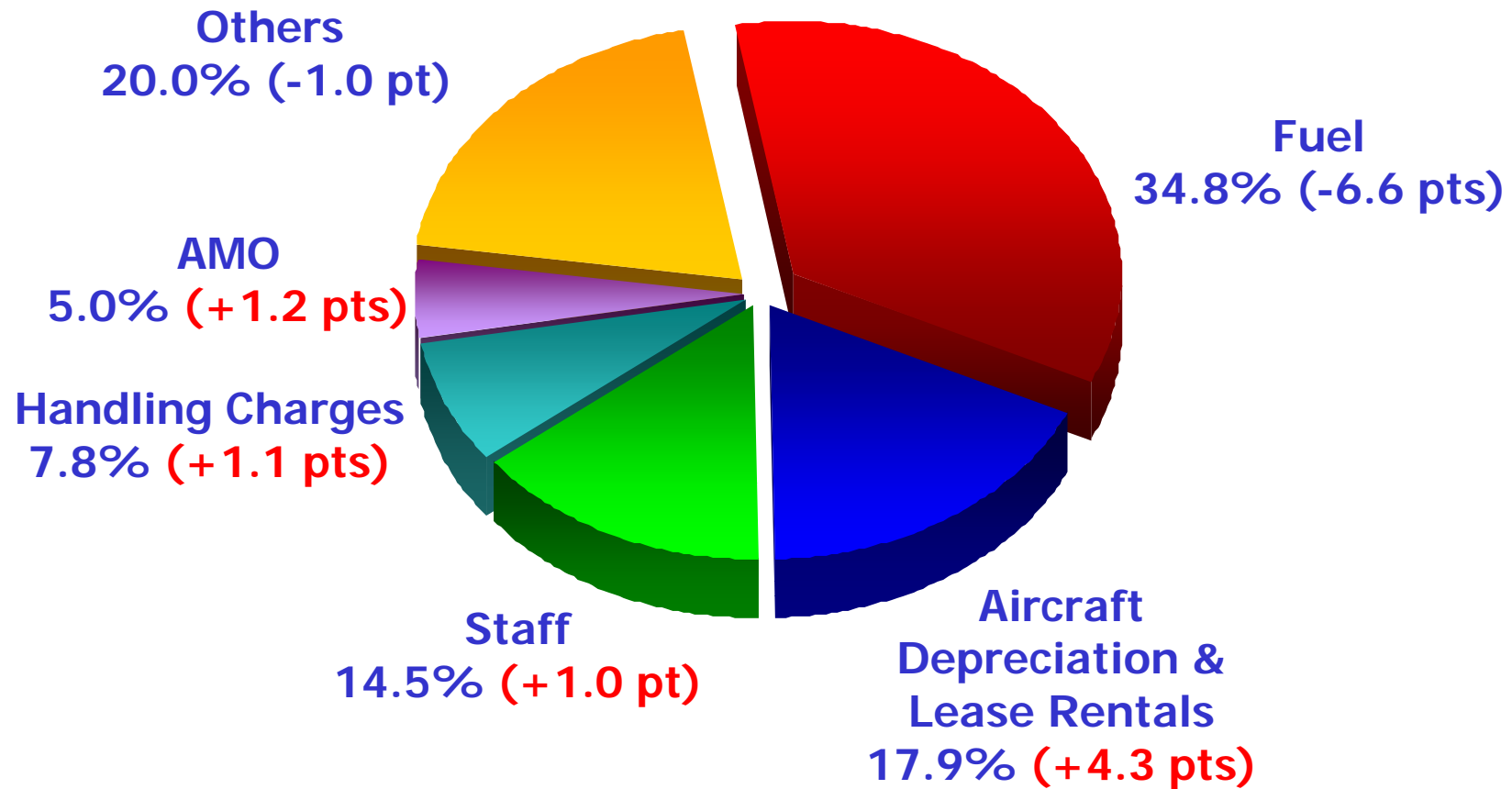
Monthly Passenger Load Factor



PARENT AIRLINE COMPANY

Q1 2009-10

Cost Composition



Thank You