



THE PARENT AIRLINE
1H FY2011/12
RESULTS

THE PARENT AIRLINE COMPANY RESULTS – 2Q & 1H FY11/12

	2Q/11	%	1H/11	%
	\$million	Change	\$million	Change
Total Revenue	3,033	+3.5	5,935	+4.0
Total Expenditure	2,944	+9.5	5,882	+10.4
- Fuel Cost	1,170	+35.1	2,384	+36.9
- Fuel Hedging Loss	9	-70.8	-	n.m.
- Ex-fuel Cost	1,765	-1.3	3,498	+0.2
Operating Profit	89	-63.5	53	-85.9
Operating Profit Margin (%)	2.9	-5.4 pts	0.9	-5.8 pts

Slide 3

SINGAPORE AIRLINES 

THE PARENT AIRLINE COMPANY OPERATING PERFORMANCE – 2Q & 1H FY11/12

	2Q/11	%	1H/11	%
		Change		Change
Revenue Pax-KM (million)	22,443	+4.1	43,457	+3.8
Available Seat-KM (million)	28,313	+5.4	56,094	+6.3
Passenger Load Factor (%)	79.3	-1.0 pts	77.5	-1.9 pts

Slide 4

SINGAPORE AIRLINES 

THE PARENT AIRLINE COMPANY OPERATING PERFORMANCE – 2Q & 1H FY11/12

	2Q/11	% Change	1H/11	% Change
Passenger Yield (¢/pkm)	11.7	-0.8	11.8	-
Passenger Unit Cost (¢/ask)	9.2	+4.5	9.2	+3.4
Passenger Unit Cost Excluding Fuel (¢/ask)	5.0	-9.1	5.0	-7.4
Passenger Breakeven Load Factor (%)	78.6	+4.0 pts	78.0	+2.6 pts

Slide 5

SINGAPORE AIRLINES 

THE PARENT AIRLINE COMPANY OPERATING PERFORMANCE – 2Q & 1H FY11/12

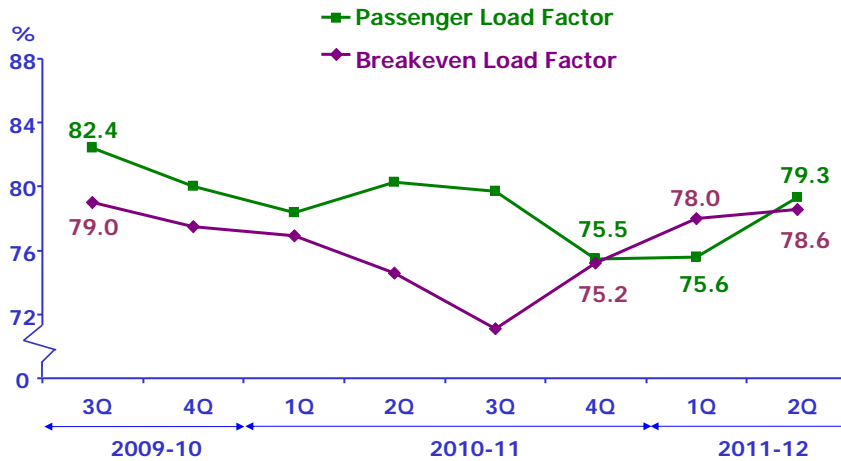
	2Q/11	% Change	1H/11	% Change
Passenger Load Factor (%)	79.3	- 1.0 pt	77.5	-1.9 pts
Passenger Breakeven Load Factor (%)	78.6	+4.0 pts	78.0	+2.6 pts
Passenger Load Factor Margin (% pts)	0.7	-5.0 pts	-0.5	-4.5 pts

Slide 6

SINGAPORE AIRLINES 

THE PARENT AIRLINE COMPANY OPERATING PERFORMANCE

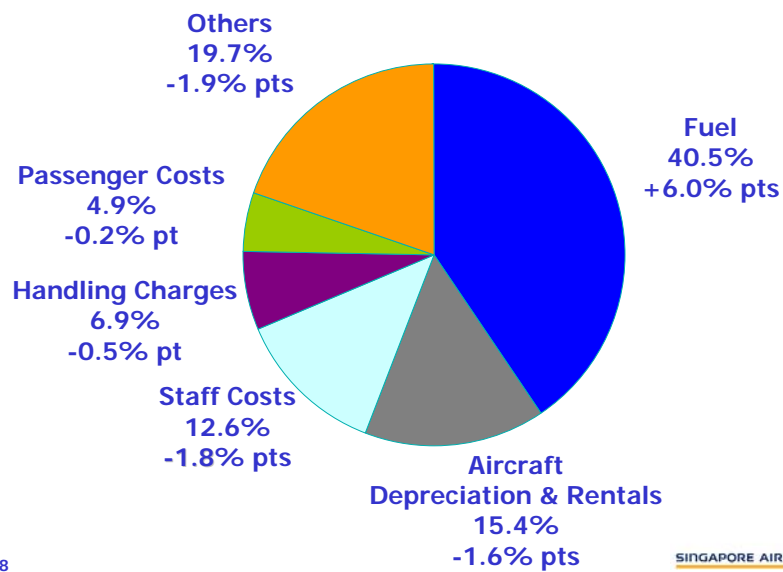
Passenger Load Factor vs Breakeven Load Factor



Slide 7

SINGAPORE AIRLINES 

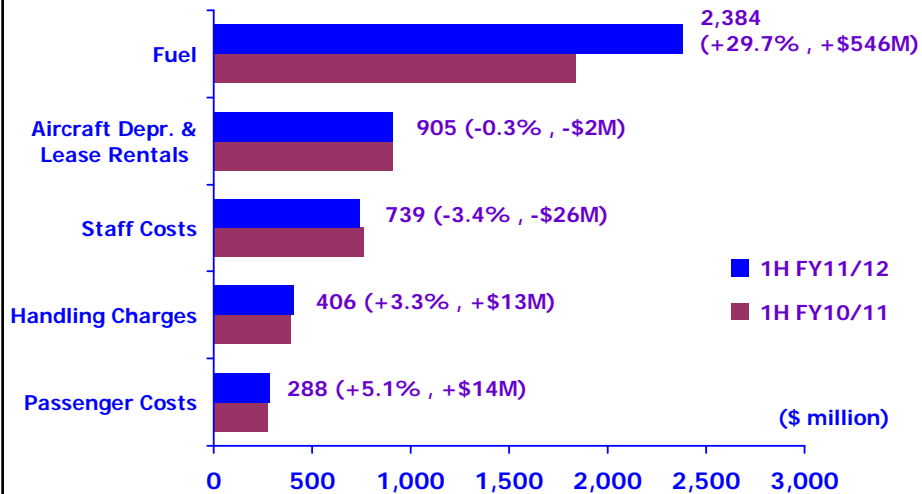
THE PARENT AIRLINE COMPANY COST COMPOSITION – 1H FY11/12



Slide 8

SINGAPORE AIRLINES 

THE PARENT AIRLINE COMPANY TOP 5 EXPENDITURE – 1H FY11/12

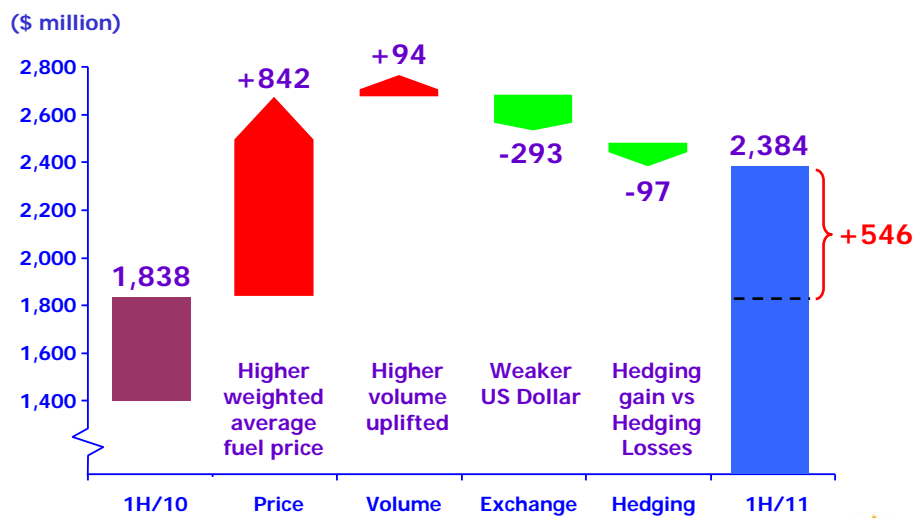


Slide 9

SINGAPORE AIRLINES



THE PARENT AIRLINE COMPANY FUEL EXPENDITURE – 1H FY11/12

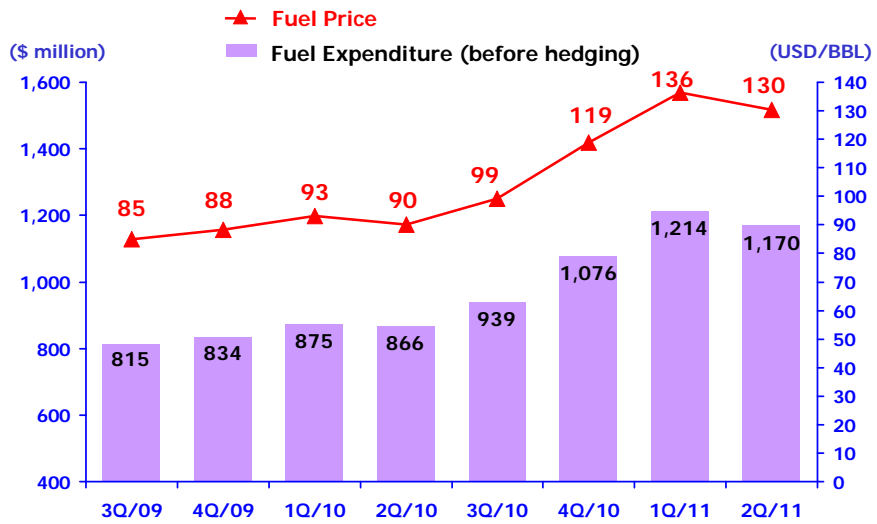


Slide 10

SINGAPORE AIRLINES



THE PARENT AIRLINE COMPANY FUEL PRICE AND EXPENDITURE - TREND



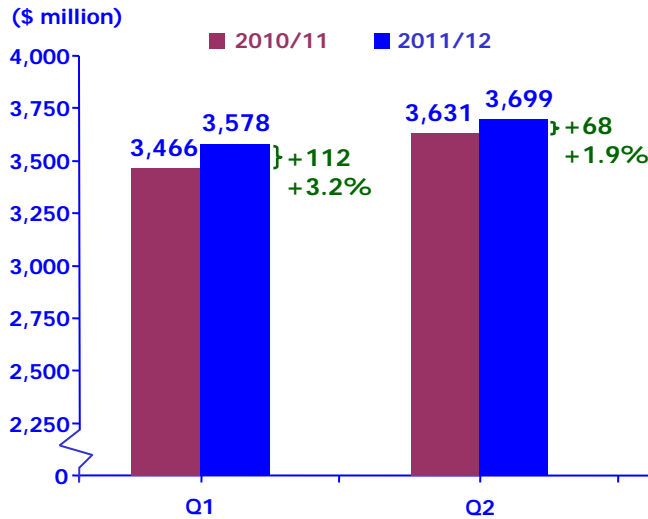
Slide 11

SINGAPORE AIRLINES 

THE GROUP 1H FY2011/12 RESULTS

SINGAPORE AIRLINES 

GROUP REVENUE – 1H FY11/12



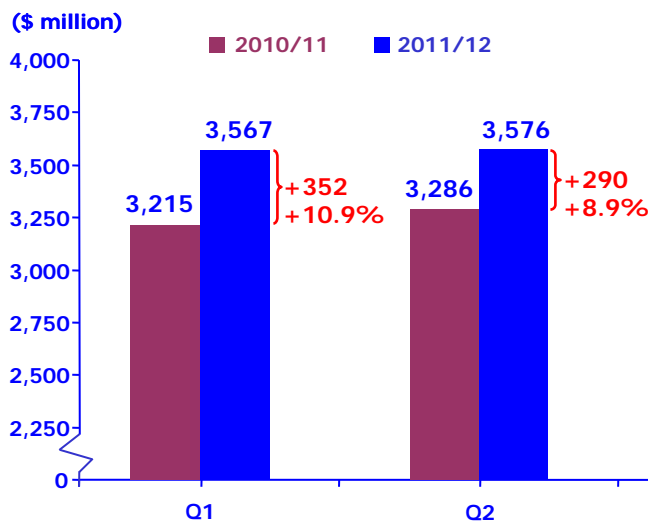
Half Year
Revenue
\$7,277M

Year-on-Year
↑ \$180M
+2.5%

Slide 13

SINGAPORE AIRLINES 

GROUP EXPENDITURE – 1H FY11/12



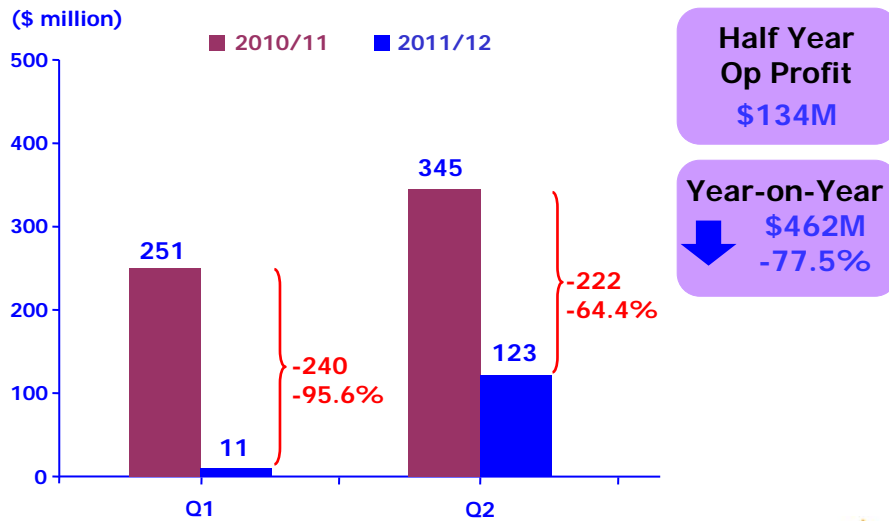
Half Year
Expenditure
\$7,143M

Year-on-Year
↑ \$642M
+9.9%

Slide 14

SINGAPORE AIRLINES 

GROUP OPERATING PROFIT – 1H FY11/12



Slide 15

SINGAPORE AIRLINES 

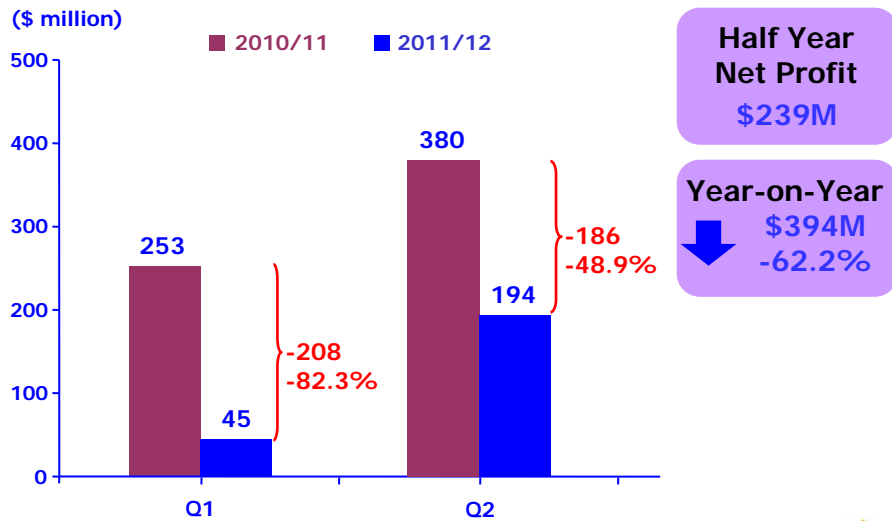
CONTRIBUTION TO GROUP OPERATING PROFIT – 1H FY11/12 (\$ million)

	<u>1H/11</u>	<u>1H/10</u>	<u>Change</u>	<u>% Change</u>
Singapore Airlines	53	380	- 327	- 86.1
SIA Engineering	69	71	- 2	- 2.8
SilkAir	34	36	- 2	- 5.6
SIA Cargo	(31)	102	- 133	n.m.

Slide 16

SINGAPORE AIRLINES 

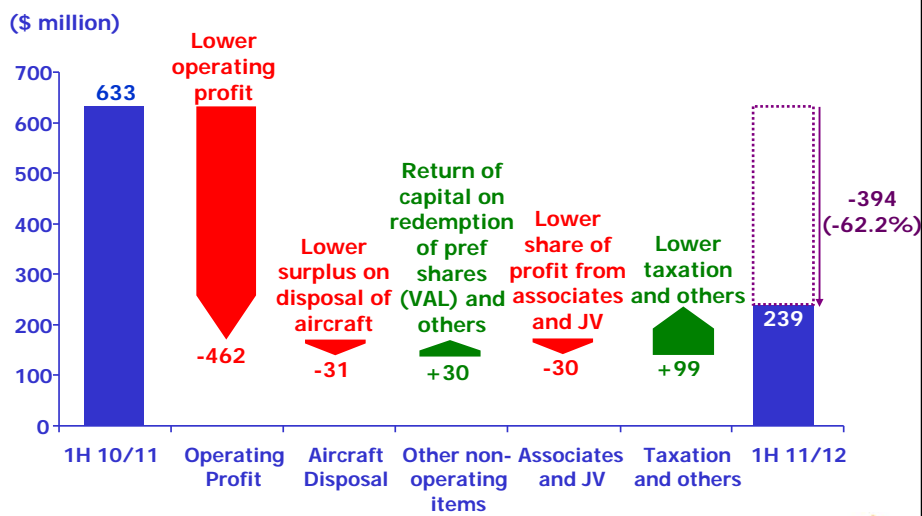
GROUP NET PROFIT – 1H FY11/12



Slide 17

SINGAPORE AIRLINES 

GROUP NET PROFIT – 1H FY11/12



Slide 18

SINGAPORE AIRLINES 

GROUP RESULTS – 1H FY11/12

	<u>1H/11</u>	<u>1H/10</u>
EBITDAR Per Share (\$)	1.23	1.64
Earnings Per Share (¢)	20.0	53.0
Interim Dividend Per Share (¢)	10.0	20.0
	<u>At 30 Sep 11</u>	<u>At 31 Mar 11</u>
Net Asset Value Per Share (\$)	10.90	11.89

Slide 19

SINGAPORE AIRLINES 

