

# SIA Group Financial Results

## 3<sup>rd</sup> Quarter of FY 06/07

# SIA Group

## Q3 (2006-07)

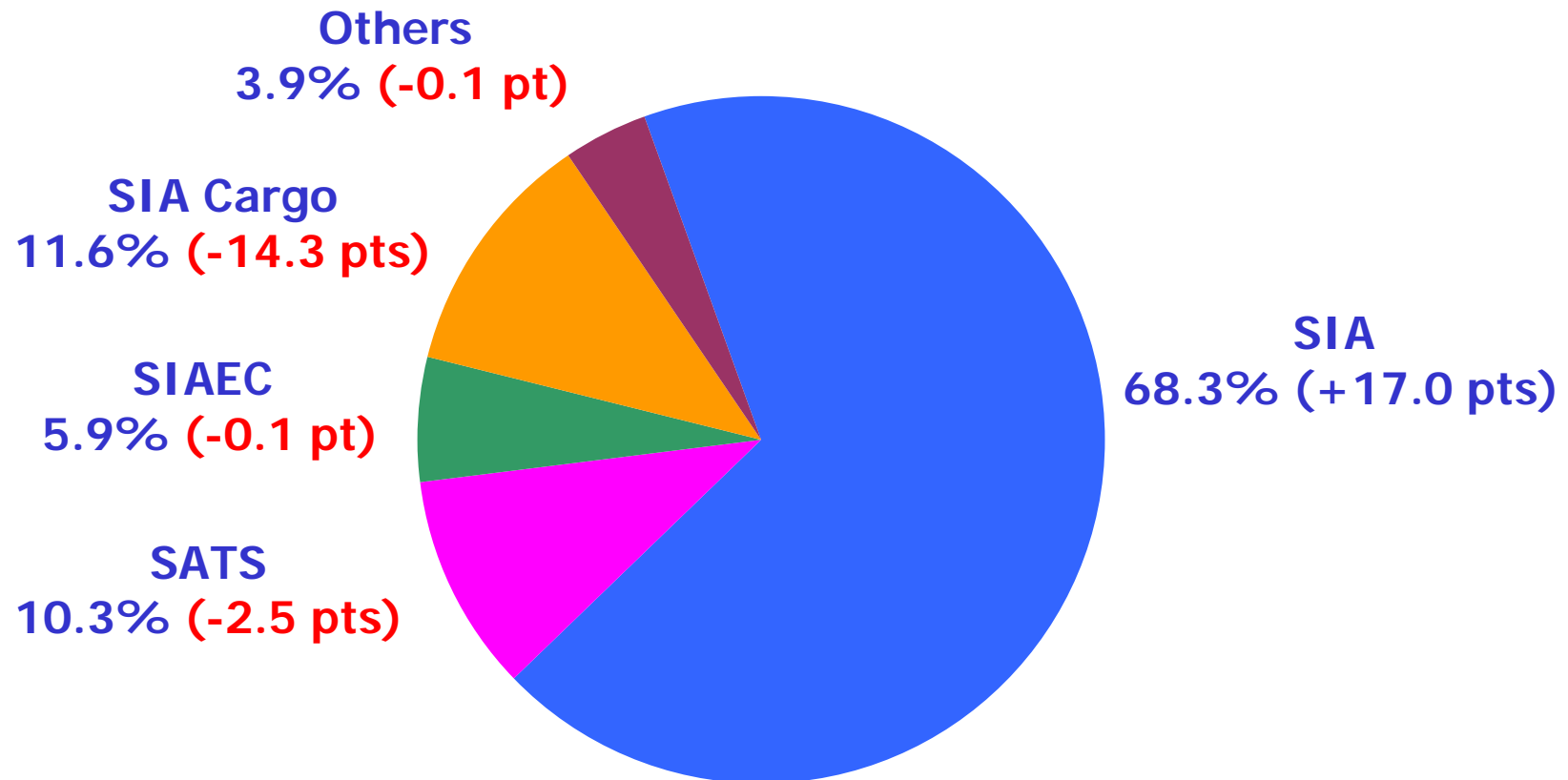
	<u>Q3 2006-07</u> <u>(\$M)</u>	<u>Q3 2005-06</u> <u>(\$M)</u>	<u>Better/(Worse)</u> <u>(%)</u>
Total Revenue	3,793.7	3,557.0	6.7
Operating Profit	447.7	374.7	19.5
Operating Profit Margin (%)	11.8	10.5	1.3 pts

# SIA Group

## Q3 (2006-07)

	<u>Q3 2006-07</u>	<u>Q3 2005-06</u>	<u>Better/(Worse)</u>
	<u>(\$M)</u>	<u>(\$M)</u>	<u>(%)</u>
Total Revenue	3,793.7	3,557.0	6.7
Operating Profit	447.7	374.7	19.5
Non-operating items	68.8	164.0	(58.0)
Exceptional Items	197.7	-	n.m.
Profit Before Tax	714.2	538.7	32.6
Profit Attributable to Equity Holders of the Company	589.2	396.6	48.6

## Contribution To Group Operating Profit



# Parent Airline Company

## Q3 (2006-07)

	<u>Q3 2006-07</u>	<u>Q3 2005-06</u>	<u>Better/ (Worse)</u>
	<u>(\$M)</u>	<u>(\$M)</u>	<u>%</u>
Total Revenue	2,901.7	2,695.4	7.7
Total Expenditure	(2,595.8)	(2,503.3)	(3.7)
Operating Profit	305.9	192.1	59.2
Operating Profit Margin	10.5	7.1	3.4 pts

# Parent Airline Company

## Q3 (2006-07)

### Operating Statistics

	<u>Q3 2006-07</u> <u>(\$M)</u>	<u>Q3 2005-06</u> <u>(\$M)</u>	<u>Change</u> <u>(%)</u>
Available Seat-KM (M)	28,434.5	27,566.3	+ 3.1
Revenue Passenger-KM (M)	22,940.6	21,121.6	+ 8.6
Passenger Load Factor (%)	80.7	76.6	+ 4.1 pts

# Parent Airline Company

## Q3 (2006-07)

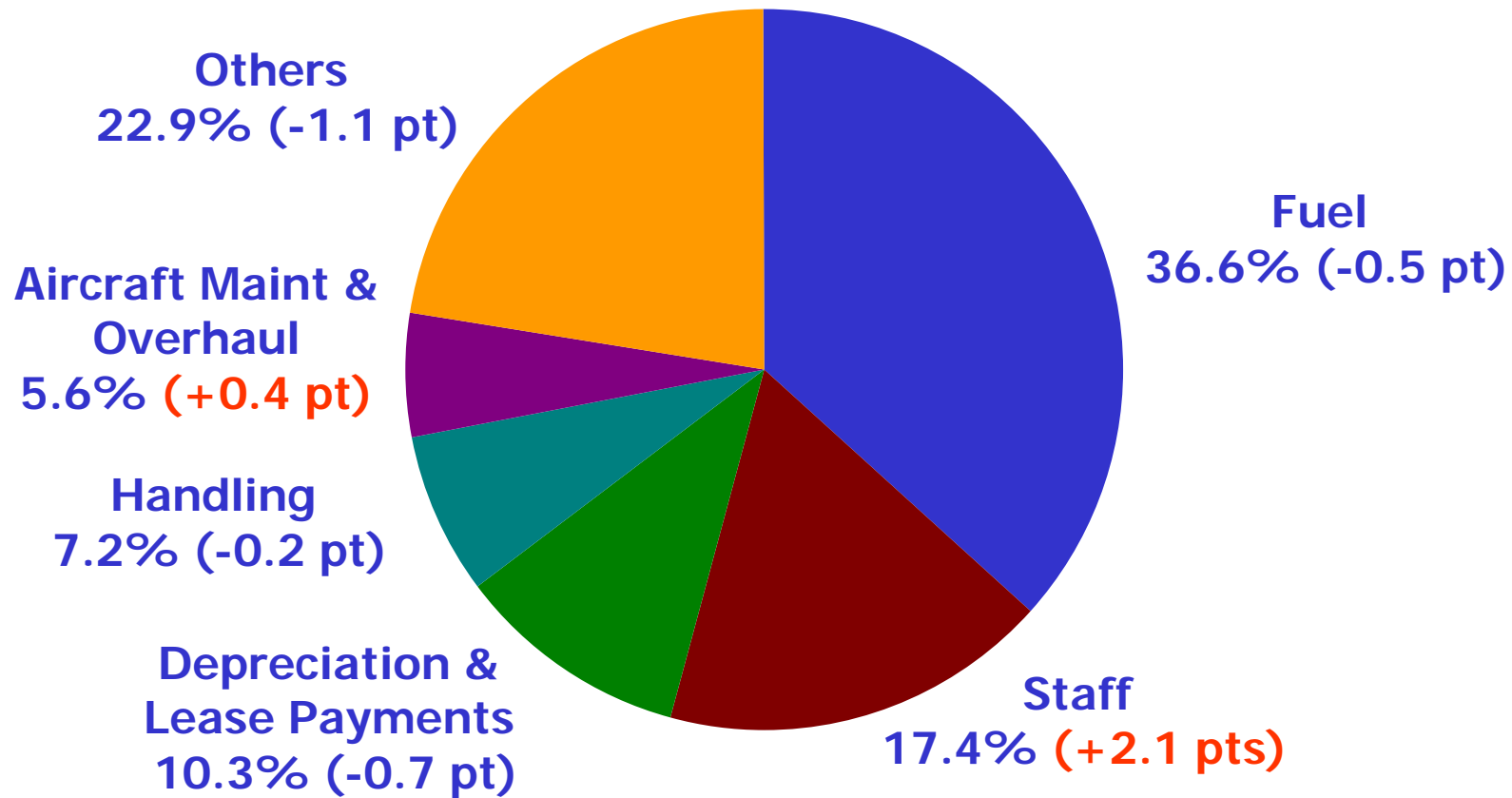
### Operating Statistics

	<u>Q3 2006-07</u>	<u>Q3 2005-06</u>	<u>Change</u>
	<u>(\$M)</u>	<u>(\$M)</u>	<u>(%)</u>
Passenger Yield- Including Fuel Surcharge (¢/pkm)	11.0	10.8	+ 1.9
Passenger Unit Cost (¢/ask)	7.8	7.6	+ 2.6
Passenger Breakeven Load Factor (%)	70.9	70.4	+ 0.5 pt
Passenger Load Factor Spread (%)	9.8 pts	6.2 pts	+ 3.6 pts

# Parent Airline Company

## Q3 (2006-07)

### Cost Composition

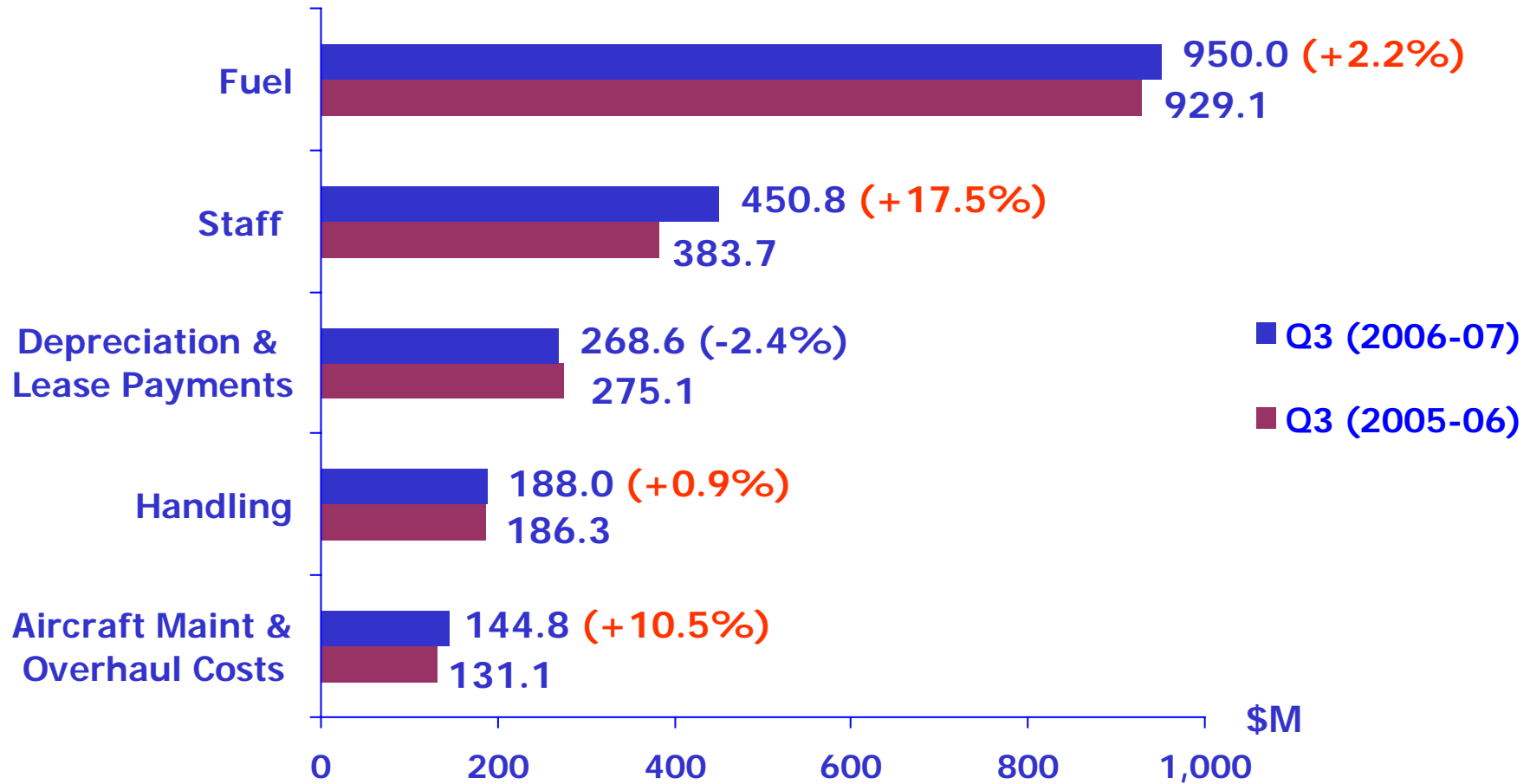




# Parent Airline Company

## Q3 (2006-07)

### Top 5 Expenditure Breakdown

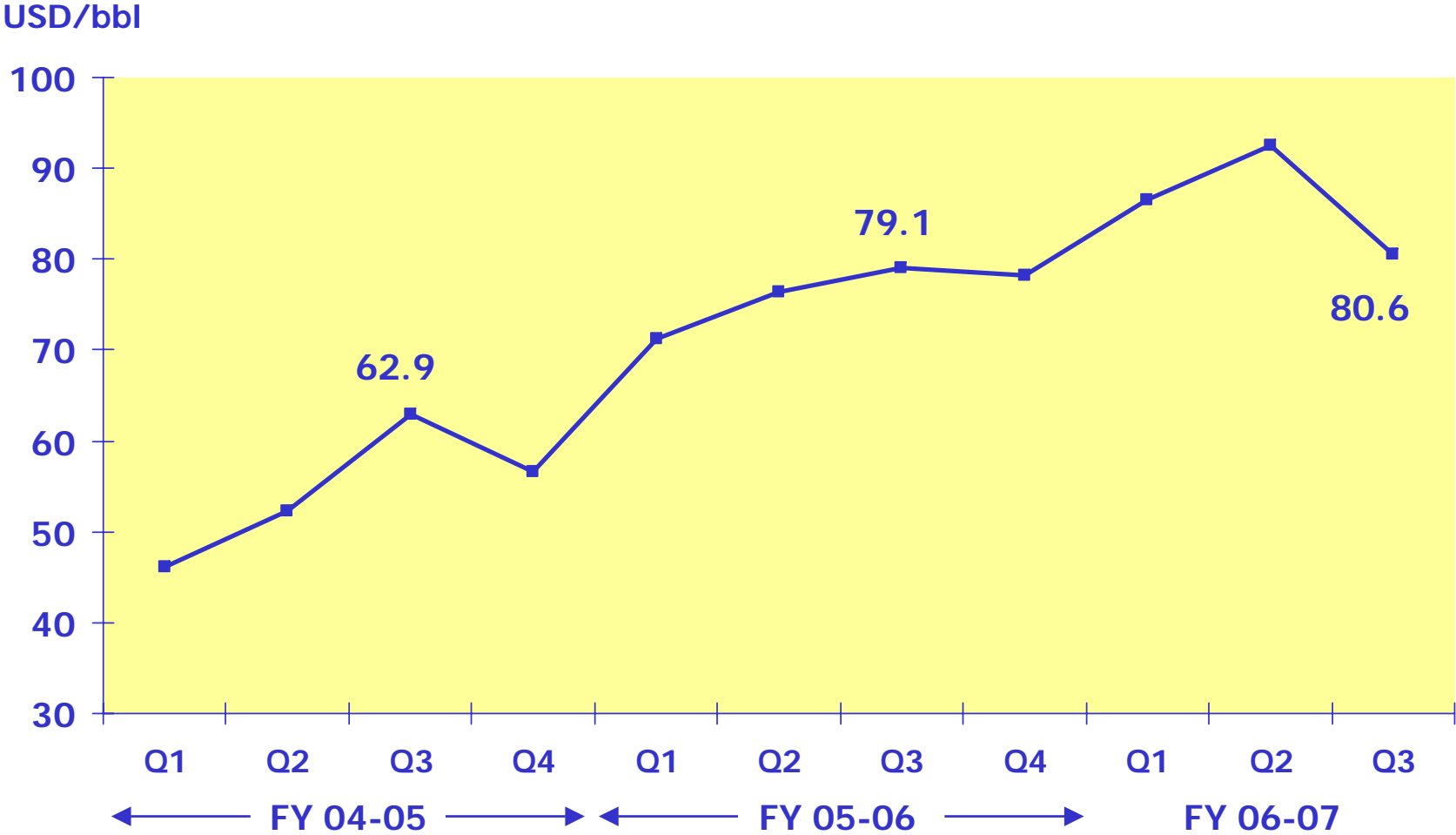


# Parent Airline Company

## Q3 (2006-07)



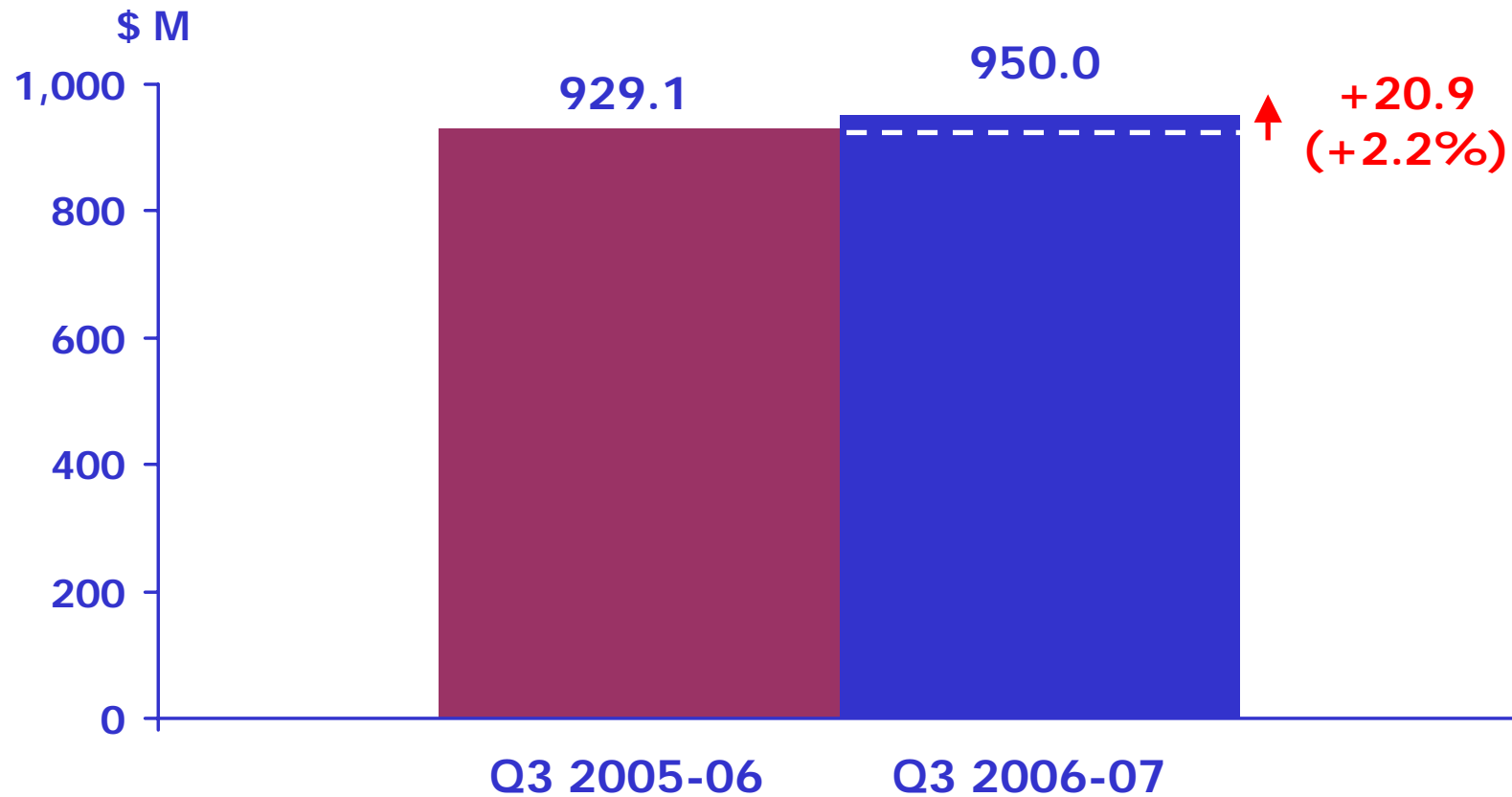
### Fuel Price Before Hedging



# Parent Airline Company

## Q3 (2006-07)

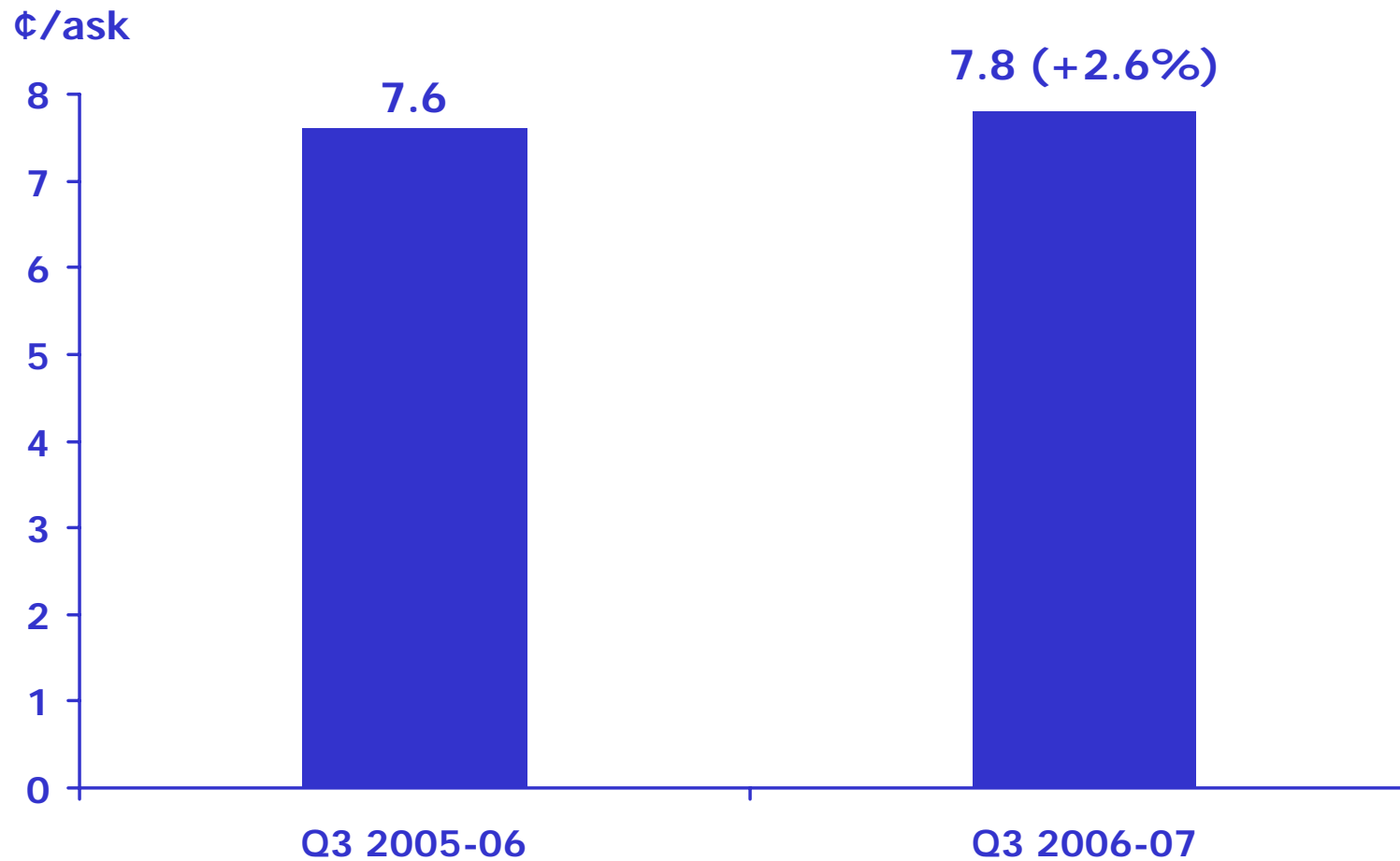
### Fuel Costs At Current Year's Price and Exchange Rate (net of hedging)



# Parent Airline Company

## Q3 (2006-07)

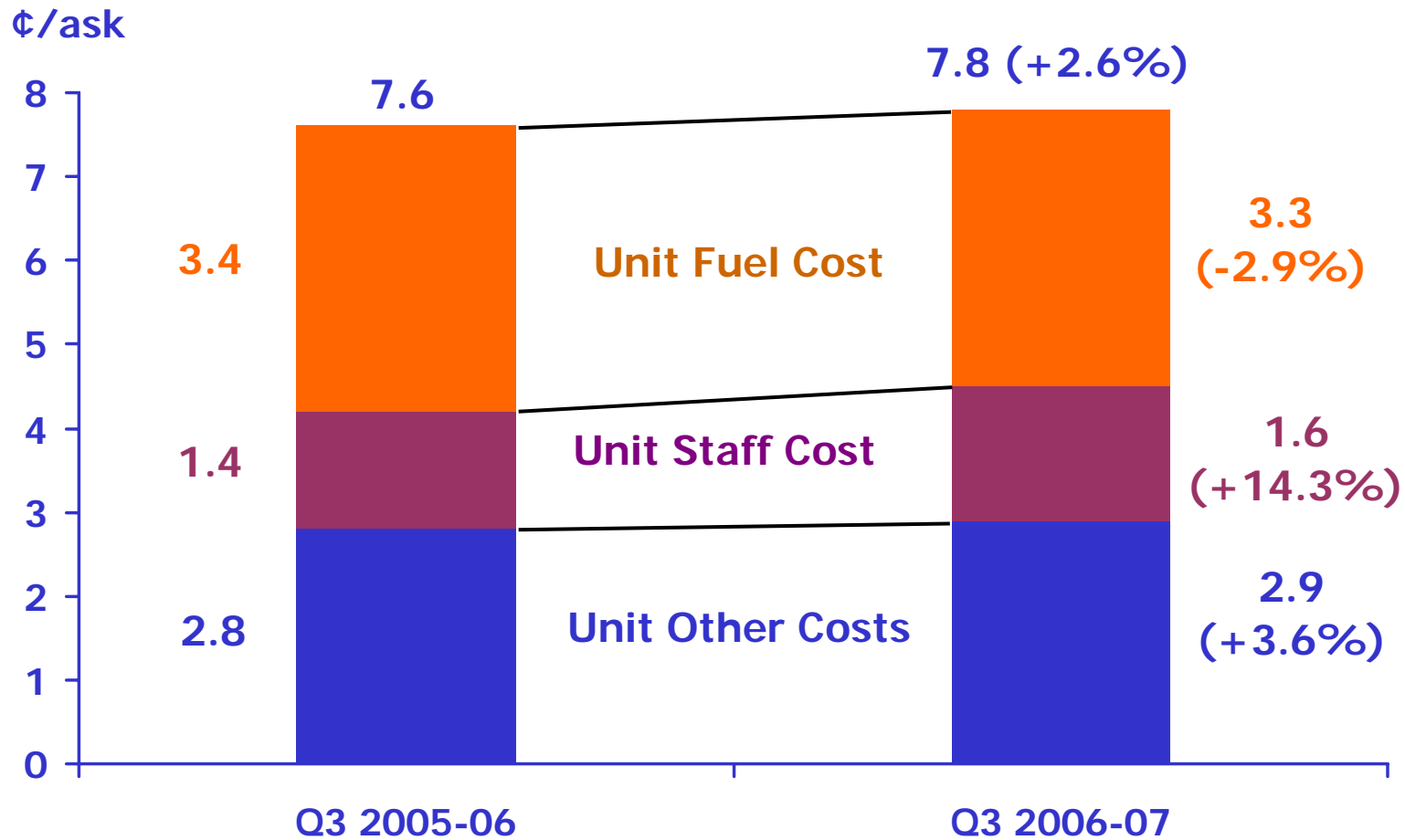
### Passenger Unit Cost



# Parent Airline Company

## Q3 (2006-07)

### Passenger Unit Cost



### Group Capital Expenditure – Next 5 Years

<i>(\$ million)</i>	<u>FY 07/08</u>	<u>FY 08/09</u>	<u>FY 09/10</u>	<u>FY 10/11</u>	<u>FY 11/12</u>
Aircraft	1,800	2,300	3,500	4,800	4,500
Other Assets	600	500	500	300	300
	2,400	2,800	4,000	5,100	4,800

Thank You